

Pärnu maakond
Pärnu linn
Kivimäe kruusamaardla

KIVIMÄE II KRUUSAKARJÄÄRI
(maavara kaevandamise luba nr KL-513514)
MARKŠEIDERIMÕÕDISTUS
Seisuga 18.09.2025
Töö nr 25-912

Tellijä: Dozerland OÜ
Aia tn 24-4
Pärnu linn
Pärnu maakond
80014

Teostaja: Maavarauuringud OÜ
Liiva 41
50303, Tartu

Vastutav täitja: Ranek Rohtla
/allkirjastatud digitaalselt/
geoloog ja diplomeeritud markšeider 6 tase
Tunnistus 189745

Tartu 2025

SISUKORD

1.	Sissejuhatus.....	3
2.	Mäeeraldise üldandmed ja geoloogiline iseloomustus.....	3
	2.1. Mäeeraldise üldandmed.....	3
	2.2. Mäeeraldise geoloogiline iseloomustus.....	7
3.	Markšeiderimõõdistus.....	8
4.	Kaevandatud maavara ja jääkvaru arvutus.....	8
5.	Kokkuvõte.....	10
6.	Kasutatud kirjandus.....	11

Tekstilised

1.	Arvutiprogramm Surfer raport. Kivimäe II kruusakarjääri mäeeraldise täitekruusa aktiivse tarbevaru plokki 3 jääkvaru maht seisuga 17.09.2025.....	12
2.	Arvutiprogramm Surfer raport. Kivimäe II kruusakarjääri mäeeraldise täitekruusa aktiivse tarbevaru plokki 4 jääkvaru maht seisuga 17.09.2025.....	13
3.	Arvutiprogramm Surfer raport. Kivimäe II kruusakarjääri mäeeraldisest pindalal 0,13 ha üle kaevandatud maht seisuga 18.09.2025	14
4.	Kivimäe II kruusakarjääri väljavõtte maardlate registrist seisuga 30.09.2025.....	15
5.	Maapinna kõrguspunktid seisuga 18.09.2025 (ainult CD-l; säästame loodust)	16

Graafilised lisad

1. Kivimäe II kruusakarjääri markšeiderimõõdistuse plaan. Mõõtkava 1:2000
2. Kivimäe II kruusakarjääri markšeiderimõõdistuse plaani läbilõiked I-I', II-II', III-III', IV-IV', V-V' ja VI-VI'

1. SISSEJUHATUS

Kivimäe kruusamaardla (nr 940) Kivimäe II kruusakarjääri markšeiderimõõdistamine tehti DOZERLAND OÜ tellimisel.

Markšeiderimõõdistamise tegemisel on lähtutud majandus- ja taristuministri 10.05.2019. a määrusest nr 32 „Markšeiderimõõdistuse täpsustatud nõuded ja kord” ja 01.01.2017. a kehtima hakanud Maapõueseaduse § 76.

Markšeiderimõõdistamise välitööd on tehtud 17.09-18.09.2025.

Markšeiderimõõdistuse aruande koostas Maavarauuringud OÜ geoloog Ranek Rohtla, mõõdistuse välitöö tegid Ranek Rohtla ja Tiit Kalmus. Markšeiderimõõdistamise plaani koostamisel on kasutatud lisaks käesoleva mõõdistuse andmetele Maavarauuringud OÜ poolt koostatud Kivimäe II kruusakarjääri mäeeraldise andmeid ja Maavarauuringud OÜ poolt koostatud Kivimäe II uuringuruumi kruusa varu geoloogiline uuring Pärnumaal (varu seisuga 31.12.2019) aruande andmeid.

2. MÄEERALDISE ÜLDANDMED JA GEOLOOGILINE ISELOOMUSTUS

2.1. Mäeeraldise üldandmed

Kivimäe II kruusakarjääri mäeeraldis (graafiline lisa 1) asub Kivimäe kruusamaardlal (nr 940) Pärnumaal, Pärnu linnas Kõima külas Kivimäe kruusakarjäär 1 (katastriüksuse tunnus 62401:001:2179) ja Kivimäe kruusakarjäär 2 (katastriüksuse tunnus 62401:001:2180) maaüksustel. Maaüksuse valitseja on Majandus- ja Kommunikatsiooniministeerium ning volitatud asutus Maa- ja Ruumiamet. Kivimäe kruusakarjääri mäeeraldis ja mäeeraldise teenindusmaa koosneb kahest erinevast alast – põhjapoolsest ja lõunapoolsest. Põhjapoolsema ja lõunapoolsema osa vahele jääb Kaelepa–Kivimäe (1590513) metsatee. Kivimäe II kruusakarjääri mäeeraldise põhjapoolsema ala pindala on 0,78 ha ja mäeeraldise teenindusmaa pindala on 1,54 ha. Kivimäe II kruusakarjääri mäeeraldise lõunapoolsema ala pindala on 4,96 ha ja mäeeraldise teenindusmaa pindala on 7,53 ha. Kokku on Kivimäe II kruusakarjääri mäeeraldise pindala 5,74 ha ja mäeeraldise teenindusmaa pindala on 9,07 ha. Kaevandamise keskkonnaluba nr KL-513514 kehtib ajavahemikul 14.02.2022–14.02.2032. Kaevandamiseluba hõlmab täitekruusa aktiivse tarbevaru 3. plokki (pindala 0,78 ha, mäeeraldise põhjapoolsem ala) ja täitekruusa aktiivse tarbevaru 4. plokki (pindala 4,96 ha, mäeeraldise lõunapoolsem ala). Mäeeraldise täitekruusa aktiivse tarbevaru 3. plokki (pindala 0,78 ha) algne maht oli 6 tuh. m³, millest kaevandatav 5,8 tuh. m³. Täitekruusa aktiivse tarbevaru 4. plokki (pindala 1,54 ha) algne maht oli 35 tuh. m³, millest kaevandatav 34,2 tuh. m³. Kattekihi maht (muld) on kokku 16,90 tuh. m³.

Varu asub põhjaveetasemest kõrgemal (plokid 3 ja 4).

Mäeeraldise detailandmetel (seisuga 30.09.2025; lisa 4) oli mäeeraldise täitekruusa aktiivse tarbevaru 3. ploki jääkvaru maht 2,8 tuh. m³, millest kaevandatav 2,6 tuh. m³. Täitekruusa aktiivse tarbevaru 4. ploki jääkvaru maht oli 28,0 tuh. m³, millest kaevandatav 27,2 tuh. m³.

Kivimäe II kruusakarjääri mäeeraldis asub ca 1 km pikkune, 20–120 m laiune ja kohati kuni 3 m kõrgune loode–kagusuunaline oosiahelal, kus maapinna absoluut kõrgused on 30–33 m vahemikus.

Lähimad majapidamised jäävad ligikaudu 1,5 km põhja, lõuna ja ida poole. Juurdepääsutee Kihlepa–Lepaspea (19108) riigimaantee 9,7 km kohalt ca 2 km vasakule, mööda Kivimäe–Karuga (1590502) metsateed ning Kivimäe II mäeeraldisi vahele jääv Kaelepa–Kivimäe (1590513) metsatee on heas korras. Pärnu metskond on oma piirkonnas metsateedele kaitsevööndi laiuseks kehtestanud 15 m teeteljest mõlemale poole.

Kivimäe kruusakarjääri mäeeraldis paikneb kahel erineval maaparandussüsteemil (MPS koodid: 6112140030010001, 6112330030080001).

Kivimäe kruusakarjääri mäeeraldise teenindusmaast põhja, lääne, lõuna ja ida pool ning mäeeraldise kahe osa vahele jääb Audru metskond 52 maaüksuse (katastritunnus 62401:001:3411) metsamaa.

Mäeeraldisel ei asu looduskaitsealasid ega muid kaitsealuseid üksikobjekte. Mäeeraldise maa-alale ei jää hooneid, kommunikatsioone ega muid tehnovõrke. Ülevaade mäeeraldise seisundist on esitatud fotodel 1–6 (seisuga 2025 september; fotod teinud Ranek Rohtla).

Mäeeraldise keskosa geograafilised koordinaadid on: 58°21'36" pl ja 24°08'54" ip (Eesti baaskaart, leht 5331).



Foto 1. Kivimäe II karjääri lõunapoolse ala kesk-ida-lääneosa vaatega põhja suunas.



Foto 2. Kivimäe II karjääri lõunapoolse ala kesk-ida-lõuna-lääneosa vaatega lõuna suunas.



Foto 3. Kivimäe II karjääri lõunapoolse ala kesk-ida-lääneosa vaatega lõuna suunas.



Foto 4. Kivimäe II karjääri lõunapoolse ala kesk-lääne-põhja-idaosa vaatega loode suunas.



Foto 5. Kivimäe II karjääri lõunapoolse ala kesk-lääne-ida-põhjaosa ja põhjapoolse ala kesk-lõunaosa vaatega kagu suunas.



Foto 6. Kivimäe karjääri põhjapoolse ala kesk-põhja-idaosa vaatega põhja suunas.

2.2. Mäeeraldise geoloogiline iseloomustus

Kivimäe kruusamaardla varu, mis jääb Kivimäe II kruusakarjääri mäeeraldise piiridesse, on kinnitatud 2020. a (Sinisalu, R., Rammo, M., 2020; EGF 9340) geoloogilise uuringu põhjal.

Kivimäe II kruusakarjääri mäeeraldise maavaraks oleva kruusalasundi levik on seotud jääjärvelisel (lg III) tasandikul kahe loode–kagusuunalise kuni 3 meetri kõrguse ja 20–120 m laiuse oosiahelaga (f III). Oosi ehitus on läbilõikes küllaltki ühetaoline, koosnedes jämedast kruusast veeriste ja rahnudega, viimaste sisaldus sügavuse suunas mõnevõrra väheneb. Rahnude osas on valdavad tardkivimid, millede diameeter on harva enam kui 1 meeter (valdav 0,2–0,5 m), veeristes on karbonaat- ja tardkivimite suhe ca 1:1. Kruusa liivaosis on peeneteraline, kvarts-päevakivi koostisega. Kruusa lamamiks on hall sitkeplastne saviliivmoreen (g III). Mäeeraldise põhjaosas esineb paiguti oosi jalamil ka liiva, mille tellija soovis lülitada ka varu hulka. Kruusa lamamispind on suhteliselt tasane, jäädes Kaelepa–Kivimäe metsateest põhja pool abs tasemele 30,5–31,3 m (keskm. 30,7 m) ja metsateest lõuna pool abs 31,2–32,5 m (keskm. 31,8 m).

Kivimäe II kruusakarjääri mäeeraldisel levib jääjärveliste setete veekiht, mis toitub sademetest. Vesi on vabapinnaline. Veekihti drenivad uuringualast kaugemal olevad ida-lääne ning põhja-lõunasuunalised kuivenduskraavid, mis välitööde teostamise ajal (mai 2019) olid kuivad. Põhjavee tase mõõdeti kuues uuringuruumi rajatud kaevandis, mis oli abs vahemikus 29,7–30,1 m (keskm. 30,0 m).

3. MARKŠEIDERIMÕÕDISTUS

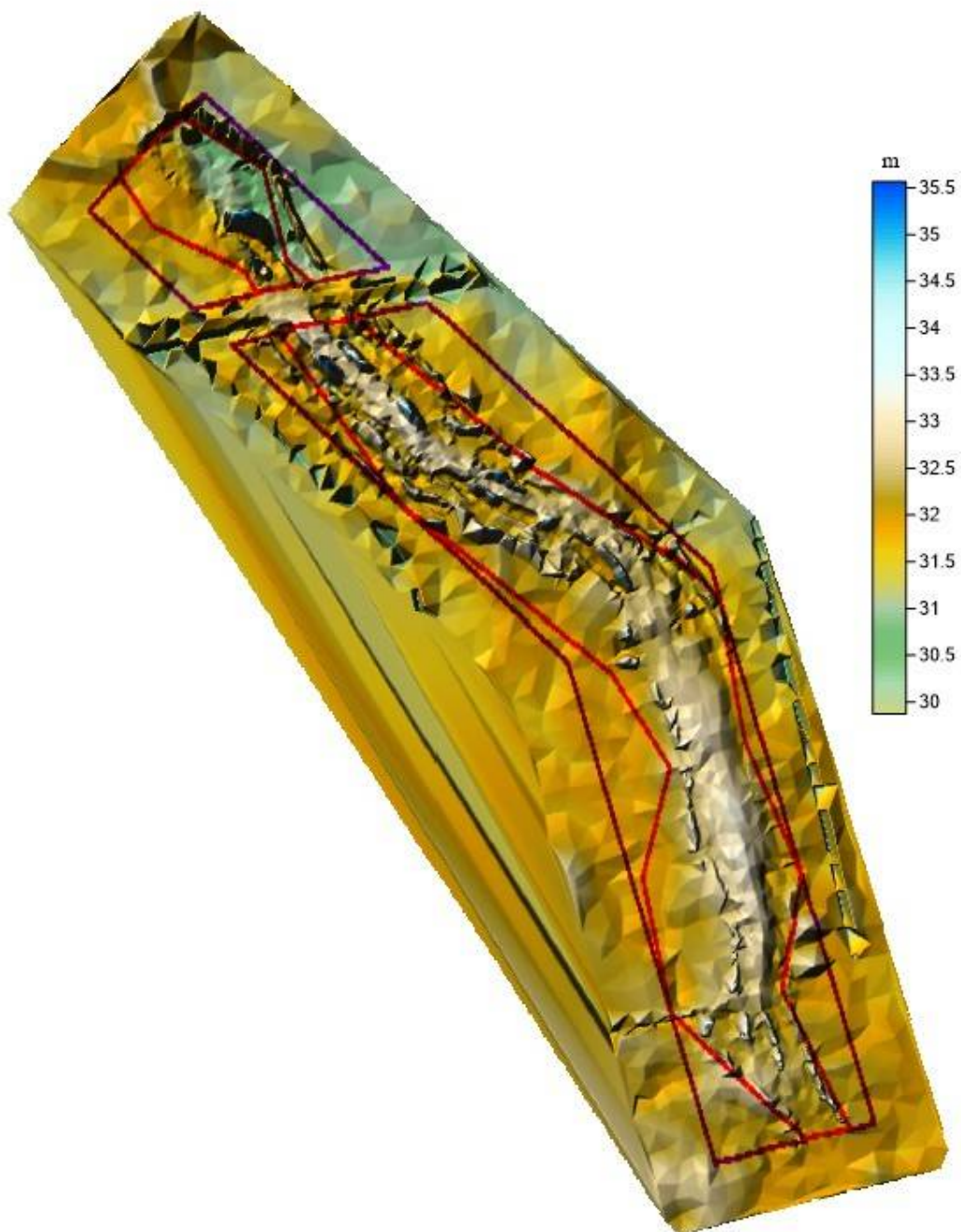
Topogeodeetilise mõõdistamise välitööd on tehtud 2025. aasta 17-18. septembril GPS RTK liikuvjaama Spectra SP100 abil, mille mõõdistamise plaaniline täpsus on horisontaalselt koordinaatide määramisel $\pm 5\text{mm} + 0,5\text{ppm}$, kõrguslikult $\pm 10\text{mm} + 1\text{ppm}$. GPS tööjaama lubatud maksimaalne vahemaa püsijaamast on tehniliste tingimuste järgi 35 km. Töö on teostatud L'EST 97 koordinaatide süsteemis, kõrgused on arvutatud EH2000 süsteemis. Koordinaadid on seotud riikliku geodeetilise põhivõrguga GPS püsijaamade võrgu GeoNet vahendusel. Nimetatud püsivõrgu haldaja on Geosoft OÜ. Mõõdistamisel kasutati Spectra SP85 liikuvjaama komplektis väliarvutit MobileMapper6. Liikuvjaam on enne ja pärast mõõdistust kontrollitud riiklikul tihendusvõrgu punktil Raheste97 (ID 5278; X=6475983,408, Y=486440,572, Z=23,479 (EH2000)). GNSS vastuvõtuseadmega mõõdetud geodeetilise punkti koordinaadid olid enne mõõdistamise alustamist: X=6475983,410 (erinevus 0,002); Y=486440,575 (erinevus 0,003); Z=23,475 (erinevus 0,004) ja peale mõõdistamise lõpetamist: X=6475983,411 (erinevus 0,003); Y=486440,576 (erinevus 0,004); Z=23,473 (erinevus 0,006). Geodeetilise punkti mõõtmistulemuste erinevus geodeetiliste punktide andmekogus esitatud koordinaatidest vastab seadme tehnilises spetsifikatsioonis toodud täpsusandmetele ning jääb maapõueseaduses toodud lubatud erinevuste piiridesse (*Vastavalt 10.05.2019. a määrusele nr 32 „Markšeiderimõõdistuse täpsustatud nõuded ja kord” §1 (4) ei või GNSS-i vastuvõtuseadmega mõõdetud koordinaatide erinevus geodeetiliste punktide andmekogus esitatud koordinaatidest kontrollmõõtmisel ületada horisontaalselt 3 cm ($\Delta H < 0,030\text{ m}$) ja kõrguslikult 7 cm ($\Delta V < 0,070\text{ m}$)).* Plaani koostamisel on kasutatud programmi MapInfo.

Nii käesolev markšeiderimõõdistus kui ka kaevandamise loa taotlus on EH2000 süsteemis.

4. KAEVANDATUD MAAVARA JA JÄÄKVARU ARVUTUS

Alates kaevandamiseloa saamisest (14.02.2022) on seisuga 18.09.2025 mäeeraldisel kaevandatud 3,50 hektaril. Kameraaltööde käigus leiti, et Kivimäe II kruusakarjääril on toimunud pindalaliselt üle kaevandamine. Pindalaliselt on üle kaevandamine toimunud 0,13 ha suuruselt Kaelepa–Kivimäe (1590513) metsatee äärest. Joonisel 1 on esitatud 2025. a maapinna reljeefimudel. Kaevandatud on 3. ploki ja 4. ploki piires. Lisaks on toimunud mäeeraldise teenindusmaal 0,16 ha suurusel alal katendi koorimine.

Kaevandatud mahtude väljaselgitamiseks toimiti järgmiselt. **Kaevandatud maavara jääkvaru maht arvutati** arvutiprogrammiga Surfer 10 (Triangulation with Linear Interpolation meetodil) mäeeraldise 07.04.2025. a markšeiderimõõdistuse ajal (Maavarauuringud OÜ) mõõdistatud maapinna mudeli ja varu lamami mudeli vahelises ruumis. Arvutamiseks tehti 2025. aastal täpsustatud lamami mudel. Jääkvaru mahud arvutati plokkide kaupa eraldi.



Joonis 1. Kivimäe II kruusakarjääri (piiritletud punase joonega) teenindusmaa (piiritletud lillaka joonega) ja lähiümbruse reljeef seisuga 18.09.2025 a.

Seisuga 18.09.2025 on Kivimäe II kruusakarjääri mäeeraldise täitekruusa aktiivse tarbevaru ploki 3 jääkvaru maht koos katendiga **4,292 tuh. m³** (*lisa 1*). Ploki 3 piires on katendiga kaetud 0,28 ha suurune ala keskmise paksusega 0,4 m, mis annab katendi mahuks **1,120 tuh. m³** ($2800 \cdot 0,4$). Seega on seisuga 18.09.2025 on Kivimäe II kruusakarjääri mäeeraldise täitekruusa aktiivse tarbevaru ploki 3 jääkvaru maht **3,172 tuh. m³** ($4,292 - 1,120$). Kaevandatav jääkvaru seisuga 18.09.2025 on 2,972 tuh. m³. Kaevandamiselo saamisel (seisuga 14.02.2022) oli täitekruusa aktiivse tarbevaru 3. ploki jääkvaru maht 6 tuh. m³. Seega

ajavahemikul 14.02.2022–18.09.2025 on Kivimäe II kruusakarjääri mäeeraldise täitekruusa aktiivse tarbevaru 3. plokist kaevandatud **2,828 tuh. m³** (6-3,172) **täitekruusa**.

Seisuga 18.09.2025 on Kivimäe II kruusakarjääri mäeeraldise täitekruusa aktiivse tarbevaru ploki 4 jääkvaru maht **36,168 tuh. m³** (lisa 2). Ploki 4 piires on katendiga kaetud 1,96 ha suurune ala keskmise paksusega 0,4 m, mis annab katendi mahuks **7,840 tuh. m³** (19600*0,4).

Seega on seisuga 18.09.2025 on Kivimäe II kruusakarjääri mäeeraldise täitekruusa aktiivse tarbevaru ploki 1 jääkvaru maht 28,328 tuh. m³ (36,168-7,840). Kaevandatav jääkvaru seisuga 18.09.2025 on 27,528 tuh. m³. Kaevandamiselo saamisel (seisuga 14.02.2022) oli täitekruusa aktiivse tarbevaru 4. ploki jääkvaru maht 35 tuh. m³. Seega ajavahemikul 14.02.2022–18.09.2025 on Kivimäe II kruusakarjääri mäeeraldise täitekruusa aktiivse tarbevaru 4. plokist kaevandatud **6,672 tuh. m³** (35-28,328) **täitekruusa**.

Seisuga 18.09.2025 on Kivimäe II kruusakarjääri mäeeraldisest pindalal 0,13 ha üle kaevandatud maht **0,939 tuh. m³** (lisa 3).

Tabelis 1 on esitatud kokkuvõtvalt käesolevas töös arvatud jääkvaru koguse ja Kivimäe II kruusakarjääri mäeeraldise bilansilise (mäeeraldise detailandmetel seisuga 30.09.2025; lisa 4) koguse võrdlus.

Tabel 1

Plokk, maavara	Algne varu seisuga 14.02.2022, tuh. m ³	Kaevandatud maht MS alusel ajavahemikul 14.02.2022- 18.09.2025, tuh. m ³	Jääkvaru seisuga 18.09.2025, tuh. m ³	Bilansiline jääkvaru seisuga 30.09.2025, tuh. m ³	Tegelik ja bilansilise jääkvaru vahe, tuh. m ³
3 – täitekruus	6,0000	2,8280	3,1720	2,8000	-0,3720
4 – täitekruus	35,0000	6,6720	28,3280	28,0000	-0,3280
KOKKU	41,0000	9,5000	31,5000	30,8000	-0,7000

– märgiga rohkem deklareeritud kogus

5. KOKKUVÕTE

Alates kaevandamiselo saamisest (14.02.2022) on seisuga 18.09.2025 Kivimäe II karjääri mäeeraldiselt kaevandatud 3,50 hektarilt 3. ja 4. plokist kokku 9,5000 tuh. m³ materjali (täitekruus). 3. plokist on kaevandatud 2,8280 tuh. m³ täitekruusa ja 4. plokist 6,6720 tuh. m³ täitekruusa. Ajavahemikul 14.02.2022–18.09.2025 on Kivimäe II kruusakarjääri mäeeraldisest pindalal 0,13 ha üle kaevandatud maht 0,939 tuh. m³. Samal ajavahemikul on toimunud mäeeraldise teenindusmaal 0,16 ha suurusel alal katendi koorimine.

Kaevandamisega rikutud ala (kaevandamine, katendi koorimine, katendi ladustamine) kogupindala on 5,55 ha. Kasutatud ega kasutuskõlbmatuks muudetud maavaravaru koguseid mäeeraldisel ei ole.

6. KASUTATUD MATERJALID

Kivimäe maardla registrikaart 0940.

Kivimäe II kruusakarjääri kaevandamise loa juurde kuuluv seletuskiri ning graafilised lisad.

Maapõueseadus (vastu võetud 27.10.2016) § 76 (Markšeidermõõdistus).

Maavara kaevandamise luba KL-513514, Keskkonnaamet, 14.02.2022. a.

Majandus- ja kommunikatsiooniministri määrus nr 9 „Markšeideritöö kord“ (RT I, 23.01.2012).

Majandus- ja taristuministri määrus nr 32 „Markšeiderimõõdistuse täpsustatud nõuded ja kord“ (RT I, 07.05.2019, 5).

Sinisalu, R., Rammo, M., 2020. Kivimäe II uuringuruumi kruusa varu geoloogiline uuring Pärnumaal (varu seisuga 31.12.2019). Maavarauuringud OÜ. EGF 9340.

Arvutiprogramm Surfer raport. Kivimäe II kruusakarjääri mäeeraldise täitekruusa aktiivse tarbevaru plokki 3 jääkvaru maht seisuga 18.09.2025.

Grid Volume Computations

Upper Surface

Grid File Name:	I:\LEPINGUD III\KIVIMÄE\KIVIMÄE II MS 2025\SURFER 2025\out3pltopo.grd
Grid Size:	846 rows x 625 columns
X Minimum:	508254.1
X Maximum:	508877.82
X Spacing:	0.99955128205133
Y Minimum:	6468428.01
Y Maximum:	6469273.25
Y Spacing:	1.0002840236689
Z Minimum:	30.546790916562
Z Maximum:	32.473900677906

Lower Surface

Grid File Name:	I:\LEPINGUD III\KIVIMÄE\KIVIMÄE II MS 2025\SURFER 2025\out3pllam.grd
Grid Size:	846 rows x 625 columns
X Minimum:	508254.1
X Maximum:	508877.82
X Spacing:	0.99955128205133
Y Minimum:	6468428.01
Y Maximum:	6469273.25
Y Spacing:	1.0002840236689
Z Minimum:	30.450550585312
Z Maximum:	31.597103635172

Volumes

Z Scale Factor:	1
-----------------	---

Total Volumes by:

Trapezoidal Rule:	4286.9953183378
Simpson's Rule:	4285.4050325075
Simpson's 3/8 Rule:	4286.2868588094

Cut & Fill Volumes

Positive Volume [Cut]:	4291.5637433713 ehk jääkvaru maht on 4,292 tuh. m³.
Negative Volume [Fill]:	4.5684250334636
Net Volume [Cut-Fill]:	4286.9953183378

Seisuga 18.09.2025 on Kivimäe II kruusakarjääri mäeeraldise täitekruusa aktiivse tarbevaru plokki 3 jääkvaru maht koos katendiga **4,292 tuh. m³**. Ploki 3 piires on katendiga kaetud 0,28 ha suurune ala keskmise paksusega 0,4 m, mis annab katendi mahuks **1,120 tuh. m³** ($2800 \cdot 0,4$). Seega on seisuga 18.09.2025 on Kivimäe II kruusakarjääri mäeeraldise täitekruusa aktiivse tarbevaru plokki 3 jääkvaru maht **3,172 tuh. m³** ($4,292 - 1,120$).

Arvutiprogramm Surfer raport. Kivimäe II kruusakarjääri mäeeraldise täitekruusa aktiivse tarbevaru ploki 4 jääkvaru maht seisuga 17.09.2025.

Grid Volume Computations

Upper Surface

Grid File Name:	I:\LEPINGUD III\KIVIMÄE\KIVIMÄE II MS 2025\SURFER 2025\out4pltopo.grd
Grid Size:	846 rows x 625 columns
X Minimum:	508254.1
X Maximum:	508877.82
X Spacing:	0.99955128205133
Y Minimum:	6468428.01
Y Maximum:	6469273.25
Y Spacing:	1.0002840236689
Z Minimum:	30.931571222359
Z Maximum:	33.564680815785

Lower Surface

Grid File Name:	I:\LEPINGUD III\KIVIMÄE\KIVIMÄE II MS 2025\SURFER 2025\out4pllam.grd
Grid Size:	846 rows x 625 columns
X Minimum:	508254.1
X Maximum:	508877.82
X Spacing:	0.99955128205133
Y Minimum:	6468428.01
Y Maximum:	6469273.25
Y Spacing:	1.0002840236689
Z Minimum:	30.490717117597
Z Maximum:	32.425424440402

Volumes

Z Scale Factor:	1
-----------------	---

Total Volumes by:

Trapezoidal Rule:	35798.026321153
Simpson's Rule:	35796.042746203
Simpson's 3/8 Rule:	35798.611910436

Cut & Fill Volumes

Positive Volume [Cut]:	36168.034662644 ehk jääkvaru maht on 36,168 tuh. m³.
Negative Volume [Fill]:	370.00834149053
Net Volume [Cut-Fill]:	35798.026321153

Seisuga 18.09.2025 on Kivimäe II kruusakarjääri mäeeraldise täitekruusa aktiivse tarbevaru ploki 4 jääkvaru maht koos katendiga **36,168 tuh. m³**. Ploki 4 piires on katendiga kaetud 1,96 ha suurune ala keskmise paksusega 0,4 m, mis annab katendi mahuks **7,840 tuh. m³** (19600*0,4). **Seega on** seisuga 18.09.2025 on Kivimäe II kruusakarjääri mäeeraldise täitekruusa aktiivse tarbevaru ploki 4 jääkvaru maht **28,328 tuh. m³** (36,168-7,840).

Arvutiprogramm Surfer raport. Kivimäe II kruusakarjääri mäeeraldisest pindalal 0,13 ha üle kaevandatud maht seisuga 18.09.2025.

Grid Volume Computations

Upper Surface

Grid File Name:	I:\LEPINGUD III\KIVIMÄE\KIVIMÄE II MS 2025\TOPO ALGNE osa.grd
Grid Size:	76 rows x 67 columns
X Minimum:	508420
X Maximum:	508486
X Spacing:	1
Y Minimum:	6469014
Y Maximum:	6469089
Y Spacing:	1
Z Minimum:	31.028837351626
Z Maximum:	33.462377505909

Lower Surface

Grid File Name:	I:\LEPINGUD III\KIVIMÄE\KIVIMÄE II MS 2025\TOPO 2025 osa.grd
Grid Size:	76 rows x 67 columns
X Minimum:	508420
X Maximum:	508486
X Spacing:	1
Y Minimum:	6469014
Y Maximum:	6469089
Y Spacing:	1
Z Minimum:	31.044897835991
Z Maximum:	32.942048041787

Volumes

Z Scale Factor:	1
-----------------	---

Total Volumes by:

Trapezoidal Rule:	939.22003029574
Simpson's Rule:	939.52009971841
Simpson's 3/8 Rule:	939.31493160542

Cut & Fill Volumes

Positive Volume [Cut]:	943.48507116516
Negative Volume [Fill]:	4.2650408694213
Net Volume [Cut-Fill]:	939.22003029574 ehk üle kaevandatud varu maht on 0,939 tuh. m³.

Seisuga 18.09.2025 on Kivimäe II kruusakarjääri mäeeraldisest pindalal 0,13 ha üle kaevandatud maht **0,939 tuh. m³.**

Mäeeraldise detailandmed

Kood 2135

Nimetus Kivimäe II kruusakarjäär

Maardla 940 - Kivimäe

Seisund aktiivne

Asukoht Pärnu maakond Pärnu linn

Kaevandamisloa number KL-513514

Kaevandamisloa kehtivus 14.02.2022 - 14.02.2032

Kaevandamisloa omaja Dozerland OÜ

Maavara kasutamise eesmärk üldehitus, teedeehitus

Korrastamissuund metsamaa

Mäeeraldise varu loa vormil täitekruus aT 41 tuh m3

Kasutusala	Max kogus aastas	Kaevandatav varu loa vormil
täitekruus	-	40

Plokid

Registrikaart	Ploki nimi	Kasutusala	Uuringuviis	Ploki liik	Jääkvaru kogus
940	3 plokk	täitekruus	2018. a määrus nr 52	aT	2.8
940	4 plokk	täitekruus	2018. a määrus nr 52	aT	28

Lisa 5. Kivimäe II kruusakarjääri mõõdistuspunktid seisuga 18.09.2025

1	6468808,107	508706,636	32,724	53	6468716,691	508760,958	32,205
2	6468811,422	508716,267	32,498	54	6468715,691	508755,855	32,497
3	6468815,026	508724,982	32,082	55	6468714,647	508749,716	32,700
4	6468816,027	508734,117	31,685	56	6468722,834	508749,266	32,702
5	6468816,390	508734,958	31,714	57	6468721,088	508741,388	33,150
6	6468818,057	508738,425	31,810	58	6468720,223	508732,361	33,232
7	6468815,574	508738,483	31,706	59	6468714,842	508734,744	33,223
8	6468814,236	508735,454	31,629	60	6468710,202	508736,863	33,245
9	6468808,722	508735,772	31,837	61	6468712,188	508744,017	33,134
10	6468801,328	508737,928	31,933	62	6468702,798	508739,745	33,164
11	6468799,219	508730,261	32,507	63	6468705,413	508747,566	32,993
12	6468795,887	508723,313	32,657	64	6468707,870	508753,291	32,705
13	6468793,364	508718,161	32,715	65	6468710,828	508760,513	32,103
14	6468791,385	508712,679	32,764	66	6468708,537	508762,640	31,952
15	6468778,869	508717,310	33,002	67	6468708,220	508764,368	31,996
16	6468780,234	508723,120	32,825	68	6468705,841	508764,614	32,195
17	6468782,390	508731,022	32,642	69	6468702,983	508764,767	32,063
18	6468783,841	508736,932	32,138	70	6468699,622	508756,498	32,587
19	6468787,840	508739,302	31,962	71	6468696,949	508749,226	32,812
20	6468781,119	508740,948	32,050	72	6468693,779	508743,034	33,226
21	6468774,188	508742,475	32,139	73	6468686,819	508743,973	33,201
22	6468773,294	508737,151	32,411	74	6468679,417	508745,251	33,230
23	6468772,008	508729,198	32,916	75	6468680,857	508750,588	33,027
24	6468769,793	508721,730	33,057	76	6468681,995	508756,778	32,507
25	6468762,266	508723,109	32,928	77	6468683,483	508763,480	32,026
26	6468756,412	508724,164	32,792	78	6468686,407	508769,078	32,066
27	6468758,477	508730,874	32,732	79	6468682,566	508770,706	31,913
28	6468759,637	508736,435	32,448	80	6468679,070	508772,582	32,101
29	6468761,377	508742,541	32,059	81	6468676,679	508774,146	31,801
30	6468763,776	508747,068	32,068	82	6468672,635	508773,544	31,959
31	6468757,126	508747,077	31,841	83	6468675,419	508769,459	31,899
32	6468757,079	508748,045	32,224	84	6468674,621	508765,693	32,172
33	6468749,361	508747,936	32,373	85	6468672,323	508758,830	31,762
34	6468749,469	508746,641	32,030	86	6468671,460	508752,894	32,710
35	6468747,247	508740,189	32,435	87	6468670,260	508746,926	33,081
36	6468746,191	508734,571	32,815	88	6468662,845	508748,747	32,999
37	6468743,858	508726,339	32,888	89	6468658,543	508749,929	33,064
38	6468736,581	508727,516	33,101	90	6468661,435	508755,808	32,611
39	6468730,704	508728,855	33,071	91	6468663,350	508762,834	32,005
40	6468732,106	508733,060	33,110	92	6468663,693	508766,658	32,132
41	6468733,236	508738,067	32,909	93	6468665,686	508773,228	32,025
42	6468734,878	508743,540	32,609	94	6468658,984	508770,999	32,239
43	6468736,301	508749,970	32,428	95	6468660,943	508774,762	32,395
44	6468731,718	508749,512	32,364	96	6468661,932	508778,240	32,453
45	6468727,886	508750,743	32,634	97	6468658,140	508768,566	32,117
46	6468727,859	508750,764	32,560	98	6468656,483	508762,648	32,187
47	6468727,899	508750,710	32,584	99	6468655,607	508757,374	32,373
48	6468728,086	508753,919	32,403	100	6468655,616	508755,209	32,770
49	6468728,161	508753,907	32,279	101	6468654,669	508750,964	33,084
50	6468728,751	508756,496	32,251	102	6468641,938	508752,630	32,960
51	6468724,783	508758,992	32,224	103	6468642,790	508758,131	32,795
52	6468720,766	508759,438	32,051	104	6468644,394	508764,119	32,180

105 6468646,398 508770,966 32,025
 106 6468647,112 508772,358 32,626
 107 6468640,126 508771,754 32,082
 108 6468640,042 508773,451 32,595
 109 6468635,197 508772,447 32,101
 110 6468635,966 508774,155 32,518
 111 6468637,460 508767,318 31,882
 112 6468636,660 508763,081 32,216
 113 6468634,753 508758,045 32,636
 114 6468633,916 508753,718 32,918
 115 6468628,077 508753,414 32,976
 116 6468621,029 508753,432 32,941
 117 6468621,271 508759,043 32,429
 118 6468623,367 508764,578 32,199
 119 6468625,839 508770,778 32,087
 120 6468626,195 508774,308 32,196
 121 6468626,739 508775,807 32,391
 122 6468620,331 508775,337 32,186
 123 6468619,936 508773,372 31,913
 124 6468615,181 508772,966 32,205
 125 6468615,365 508772,011 31,901
 126 6468611,491 508771,975 32,290
 127 6468612,074 508770,332 31,823
 128 6468613,321 508766,141 32,330
 129 6468613,300 508760,902 32,106
 130 6468613,775 508757,351 32,561
 131 6468613,447 508753,022 32,798
 132 6468604,455 508752,837 32,698
 133 6468605,455 508760,035 32,191
 134 6468606,180 508765,278 31,924
 135 6468605,958 508769,389 31,901
 136 6468605,887 508770,564 32,384
 137 6468605,962 508770,538 32,442
 138 6468601,866 508771,074 31,950
 139 6468602,765 508772,915 32,449
 140 6468599,159 508773,590 31,975
 141 6468600,690 508775,569 32,132
 142 6468596,284 508778,135 31,957
 143 6468592,194 508779,456 31,963
 144 6468591,454 508772,774 32,195
 145 6468597,317 508770,819 32,236
 146 6468599,463 508768,461 31,737
 147 6468597,989 508762,867 32,021
 148 6468590,025 508764,644 32,188
 149 6468595,401 508755,921 32,384
 150 6468588,412 508759,181 32,314
 151 6468589,393 508767,971 32,135
 152 6468586,952 508770,482 32,045
 153 6468582,463 508773,036 32,221
 154 6468576,006 508774,995 32,121
 155 6468575,283 508773,113 32,918
 156 6468584,880 508777,505 31,863
 157 6468582,293 508765,544 32,166
 158 6468581,035 508760,082 32,023

159 6468579,714 508753,935 32,244
 160 6468574,046 508757,244 32,267
 161 6468570,754 508758,639 32,194
 162 6468573,260 508763,200 32,021
 163 6468574,485 508766,794 32,064
 164 6468575,799 508768,640 32,063
 165 6468571,150 508770,116 32,156
 166 6468569,105 508773,028 32,136
 167 6468568,973 508775,318 32,700
 168 6468566,611 508768,400 32,030
 169 6468564,785 508764,988 32,008
 170 6468564,425 508761,421 32,255
 171 6468557,226 508763,102 32,322
 172 6468556,386 508761,050 32,404
 173 6468558,668 508760,606 32,977
 174 6468555,719 508761,349 32,516
 175 6468552,301 508763,714 32,376
 176 6468551,331 508762,844 32,880
 177 6468552,744 508767,100 32,276
 178 6468554,120 508770,635 32,197
 179 6468555,357 508774,251 32,214
 180 6468555,452 508777,972 32,176
 181 6468555,583 508779,585 32,460
 182 6468546,044 508780,128 32,319
 183 6468546,796 508782,169 33,145
 184 6468546,999 508773,316 32,267
 185 6468548,206 508769,203 32,295
 186 6468549,720 508764,982 32,451
 187 6468546,118 508765,050 32,358
 188 6468546,399 508763,476 33,074
 189 6468543,921 508764,436 32,416
 190 6468543,963 508763,423 33,357
 191 6468540,516 508765,978 32,311
 192 6468540,869 508763,959 33,152
 193 6468538,612 508763,719 32,458
 194 6468539,123 508768,810 32,344
 195 6468539,385 508772,888 32,375
 196 6468541,252 508777,589 32,365
 197 6468542,106 508780,906 32,234
 198 6468542,737 508782,942 32,218
 199 6468543,409 508783,949 32,659
 200 6468536,178 508782,471 32,162
 201 6468536,833 508784,685 33,062
 202 6468534,762 508778,734 32,325
 203 6468533,752 508772,185 32,336
 204 6468532,354 508767,389 32,488
 205 6468530,326 508763,775 32,238
 206 6468520,777 508765,249 32,440
 207 6468522,258 508771,212 32,349
 208 6468524,339 508776,912 32,072
 209 6468526,385 508781,897 32,194
 210 6468527,208 508786,724 32,134
 211 6468527,282 508788,877 33,205
 212 6468519,981 508789,439 32,250

213 6468520,926 508790,870 33,410
 214 6468518,980 508784,253 32,148
 215 6468517,958 508779,307 32,199
 216 6468517,729 508774,366 32,219
 217 6468517,171 508769,631 32,270
 218 6468509,392 508770,868 32,224
 219 6468511,720 508778,397 32,114
 220 6468514,043 508784,436 32,133
 221 6468515,212 508789,488 32,271
 222 6468516,425 508793,012 32,054
 223 6468517,989 508794,772 33,374
 224 6468512,417 508797,306 32,080
 225 6468513,108 508798,662 33,162
 226 6468507,826 508798,167 32,009
 227 6468508,235 508799,374 32,252
 228 6468506,994 508793,129 31,991
 229 6468506,758 508786,639 32,130
 230 6468505,903 508780,642 32,011
 231 6468504,316 508775,848 32,063
 232 6468499,538 508774,743 31,999
 233 6468497,962 508774,100 32,203
 234 6468496,154 508776,812 31,924
 235 6468498,001 508781,365 31,930
 236 6468499,503 508785,719 31,833
 237 6468501,149 508790,553 32,126
 238 6468503,407 508794,966 32,069
 239 6468504,637 508799,762 31,925
 240 6468504,953 508802,060 32,543
 241 6468501,173 508802,309 31,967
 242 6468503,192 508803,572 32,144
 243 6468500,849 508805,217 32,112
 244 6468502,336 508805,010 32,693
 245 6468502,204 508806,745 32,331
 246 6468496,717 508810,217 32,312
 247 6468493,018 508804,861 32,061
 248 6468490,564 508796,302 32,035
 249 6468487,894 508791,702 31,855
 250 6468485,194 508782,424 31,966
 251 6468486,148 508777,238 32,018
 252 6468490,104 508776,153 32,134
 253 6468488,618 508774,994 31,933
 254 6468489,548 508772,943 32,173
 255 6468490,858 508774,025 32,804
 256 6468491,898 508775,683 32,726
 257 6468492,757 508777,127 32,005
 258 6468498,253 508772,968 32,345
 259 6468501,364 508771,900 32,394
 260 6468500,339 508769,508 32,775
 261 6468504,656 508767,532 32,373
 262 6468509,509 508768,172 32,715
 263 6468515,009 508766,942 32,280
 264 6468520,428 508764,108 32,286
 265 6468526,904 508761,521 32,326
 266 6468522,550 508755,532 32,578

267 6468521,300 508755,057 33,233
 268 6468528,455 508750,352 32,655
 269 6468526,826 508749,205 32,969
 270 6468533,252 508758,112 32,555
 271 6468538,790 508762,142 32,417
 272 6468541,424 508760,956 32,327
 273 6468541,264 508762,541 33,472
 274 6468544,576 508760,651 32,530
 275 6468543,963 508762,006 33,315
 276 6468546,642 508758,597 32,359
 277 6468545,108 508754,928 32,231
 278 6468540,887 508750,800 32,455
 279 6468539,860 508744,785 32,629
 280 6468537,106 508739,711 32,484
 281 6468535,909 508737,821 32,574
 282 6468543,863 508731,950 32,201
 283 6468542,443 508730,676 33,298
 284 6468544,095 508736,500 32,163
 285 6468547,029 508740,777 32,315
 286 6468549,260 508745,836 32,382
 287 6468551,431 508751,225 32,326
 288 6468552,542 508753,769 32,303
 289 6468550,535 508756,570 32,237
 290 6468550,291 508758,550 32,726
 291 6468554,403 508758,788 32,348
 292 6468554,860 508760,089 32,413
 293 6468553,496 508760,808 32,998
 294 6468556,225 508759,235 32,304
 295 6468557,859 508759,855 33,230
 296 6468558,873 508757,126 32,331
 297 6468559,895 508759,146 33,584
 298 6468557,598 508751,943 32,243
 299 6468556,923 508748,820 32,300
 300 6468556,709 508746,203 32,178
 301 6468556,415 508742,015 32,408
 302 6468553,288 508738,285 32,202
 303 6468550,814 508734,055 32,194
 304 6468548,922 508729,419 32,295
 305 6468548,207 508727,506 32,993
 306 6468552,716 508722,840 32,227
 307 6468551,543 508721,674 33,038
 308 6468554,825 508727,476 32,172
 309 6468557,509 508732,485 32,241
 310 6468558,683 508736,553 32,288
 311 6468559,919 508741,858 32,468
 312 6468561,538 508743,145 32,672
 313 6468562,700 508741,998 33,489
 314 6468562,304 508747,301 32,372
 315 6468561,904 508750,986 32,237
 316 6468562,052 508753,438 32,142
 317 6468562,129 508755,896 32,311
 318 6468562,526 508757,135 32,883
 319 6468568,495 508754,480 32,280
 320 6468569,196 508756,099 32,996

321 6468567,175 508750,421 32,121
 322 6468565,988 508746,518 32,247
 323 6468565,253 508743,454 32,361
 324 6468565,766 508741,490 33,220
 325 6468572,280 508743,075 32,496
 326 6468573,618 508747,067 32,321
 327 6468571,913 508750,158 32,441
 328 6468572,039 508753,300 32,438
 329 6468572,893 508754,150 33,177
 330 6468577,841 508751,005 32,334
 331 6468577,839 508750,950 32,266
 332 6468577,237 508752,821 33,394
 333 6468579,451 508752,533 32,533
 334 6468578,642 508748,783 32,346
 335 6468577,505 508745,380 32,408
 336 6468577,306 508742,134 32,503
 337 6468580,363 508739,676 32,426
 338 6468578,847 508736,644 32,212
 339 6468575,381 508734,695 32,111
 340 6468572,354 508733,747 32,077
 341 6468568,512 508734,521 32,184
 342 6468565,068 508737,808 32,351
 343 6468566,281 508739,489 33,553
 344 6468564,661 508736,719 32,615
 345 6468566,919 508730,278 32,173
 346 6468560,543 508731,034 32,323
 347 6468563,042 508724,987 32,222
 348 6468561,968 508720,933 32,264
 349 6468561,943 508716,846 32,250
 350 6468563,876 508713,977 32,273
 351 6468565,494 508713,806 33,035
 352 6468565,968 508715,028 33,007
 353 6468564,597 508715,936 32,339
 354 6468569,036 508717,324 32,335
 355 6468569,415 508715,326 33,059
 356 6468573,579 508719,615 32,171
 357 6468575,203 508718,090 33,626
 358 6468574,782 508718,163 33,439
 359 6468574,897 508726,206 32,126
 360 6468575,169 508729,786 32,028
 361 6468578,445 508731,617 31,907
 362 6468579,995 508728,797 32,120
 363 6468582,238 508728,052 32,319
 364 6468586,138 508727,542 32,593
 365 6468585,491 508719,629 32,498
 366 6468581,078 508718,906 32,553
 367 6468579,026 508716,258 32,269
 368 6468576,755 508715,562 33,542
 369 6468580,027 508710,646 32,373
 370 6468577,766 508710,976 32,503
 371 6468579,018 508713,253 32,199
 372 6468576,547 508713,007 33,439
 373 6468576,521 508711,088 32,904
 374 6468578,562 508702,558 32,605

375 6468576,702 508703,240 31,781
 376 6468577,076 508695,807 32,432
 377 6468575,300 508697,079 31,645
 378 6468575,578 508690,841 32,354
 379 6468574,078 508691,301 31,547
 380 6468579,924 508689,817 32,521
 381 6468582,599 508689,474 32,263
 382 6468581,680 508697,923 32,445
 383 6468583,837 508697,371 31,777
 384 6468583,213 508705,820 32,482
 385 6468586,655 508705,611 32,175
 386 6468584,679 508715,238 32,436
 387 6468589,959 508716,330 32,455
 388 6468586,169 508724,206 32,568
 389 6468592,942 508724,561 32,476
 390 6468598,750 508728,194 32,430
 391 6468599,306 508729,937 33,093
 392 6468594,557 508730,201 32,687
 393 6468596,217 508730,665 33,504
 394 6468589,733 508730,442 32,613
 395 6468590,930 508735,341 32,799
 396 6468595,243 508735,567 32,930
 397 6468593,788 508738,302 32,576
 398 6468596,261 508740,062 32,440
 399 6468590,981 508743,449 32,534
 400 6468593,067 508750,354 32,778
 401 6468597,298 508750,079 32,645
 402 6468595,972 508746,843 32,499
 403 6468602,803 508750,313 32,674
 404 6468601,229 508744,716 32,329
 405 6468601,821 508740,683 32,410
 406 6468601,125 508737,574 32,417
 407 6468601,538 508735,803 32,896
 408 6468608,031 508737,382 32,507
 409 6468607,874 508736,103 32,925
 410 6468609,576 508741,330 32,430
 411 6468610,717 508746,506 32,824
 412 6468618,127 508747,768 32,861
 413 6468617,756 508742,041 32,530
 414 6468617,615 508736,477 32,431
 415 6468618,459 508734,845 33,277
 416 6468622,994 508737,099 32,466
 417 6468624,380 508743,639 32,742
 418 6468626,214 508746,794 32,847
 419 6468631,334 508745,774 32,900
 420 6468631,254 508745,242 32,729
 421 6468631,592 508741,461 32,547
 422 6468631,967 508738,773 32,430
 423 6468631,147 508736,988 33,357
 424 6468633,142 508744,614 32,718
 425 6468634,749 508747,873 32,647
 426 6468640,064 508746,368 32,703
 427 6468639,061 508741,400 32,686
 428 6468637,775 508739,520 32,469

429 6468635,702 508736,894 32,431
 430 6468638,110 508735,953 32,637
 431 6468636,853 508734,557 34,043
 432 6468638,749 508735,593 32,748
 433 6468639,242 508733,811 32,614
 434 6468637,540 508733,492 34,112
 435 6468639,664 508734,302 32,666
 436 6468642,649 508736,539 32,676
 437 6468644,438 508741,882 32,996
 438 6468645,786 508745,569 33,039
 439 6468654,981 508742,951 33,025
 440 6468656,106 508736,553 32,977
 441 6468650,093 508737,700 32,597
 442 6468649,288 508737,545 32,368
 443 6468654,062 508734,368 32,432
 444 6468658,637 508731,037 32,633
 445 6468659,319 508729,867 32,928
 446 6468660,422 508736,464 32,897
 447 6468661,600 508742,201 32,935
 448 6468669,268 508739,942 33,104
 449 6468667,781 508735,736 32,918
 450 6468666,854 508731,708 32,729
 451 6468667,242 508728,964 32,620
 452 6468667,610 508727,013 32,990
 453 6468672,826 508725,469 32,659
 454 6468672,789 508724,122 32,976
 455 6468674,858 508729,802 32,797
 456 6468676,305 508734,049 32,933
 457 6468677,940 508737,774 33,027
 458 6468685,835 508736,971 33,198
 459 6468685,374 508732,144 33,201
 460 6468684,669 508727,460 32,701
 461 6468684,326 508723,346 32,475
 462 6468684,263 508720,632 32,654
 463 6468687,021 508719,277 32,424
 464 6468684,718 508718,708 32,668
 465 6468686,781 508716,008 32,473
 466 6468684,208 508716,102 32,500
 467 6468685,359 508713,180 32,408
 468 6468683,994 508713,919 32,907
 469 6468689,978 508711,276 32,405
 470 6468691,388 508710,926 32,950
 471 6468690,038 508707,420 32,370
 472 6468691,378 508707,023 32,792
 473 6468692,249 508712,291 32,470
 474 6468692,752 508710,977 32,929
 475 6468691,511 508717,034 32,423
 476 6468691,607 508716,998 32,352
 477 6468693,054 508721,906 32,350
 478 6468692,813 508727,047 32,939
 479 6468693,984 508733,167 33,048
 480 6468695,661 508736,583 33,074
 481 6468700,415 508735,545 33,041
 482 6468703,419 508731,903 32,931

483 6468702,372 508725,360 32,923
 484 6468701,482 508719,800 32,602
 485 6468701,421 508714,116 32,387
 486 6468701,633 508712,495 33,024
 487 6468708,040 508711,917 32,452
 488 6468708,058 508710,040 33,237
 489 6468710,070 508715,900 32,502
 490 6468712,027 508719,913 32,943
 491 6468713,287 508724,624 32,872
 492 6468713,090 508728,647 33,002
 493 6468719,685 508724,309 32,892
 494 6468720,255 508719,387 32,777
 495 6468718,799 508713,839 32,444
 496 6468718,003 508710,335 32,386
 497 6468718,783 508707,867 32,344
 498 6468718,696 508706,907 32,774
 499 6468722,389 508705,614 32,714
 500 6468724,556 508707,428 32,897
 501 6468725,552 508708,621 32,405
 502 6468726,499 508712,310 32,446
 503 6468726,845 508716,655 32,607
 504 6468727,058 508723,061 32,931
 505 6468736,233 508722,758 32,801
 506 6468736,217 508717,694 32,778
 507 6468737,061 508713,683 32,680
 508 6468737,752 508710,640 32,627
 509 6468738,297 508709,638 33,079
 510 6468733,400 508709,462 32,538
 511 6468734,414 508708,685 33,048
 512 6468742,877 508707,686 32,728
 513 6468742,927 508708,846 32,618
 514 6468743,152 508706,822 32,479
 515 6468741,657 508706,524 32,852
 516 6468741,713 508704,262 33,098
 517 6468742,445 508703,070 32,370
 518 6468744,735 508701,272 32,411
 519 6468746,140 508702,478 33,241
 520 6468746,773 508704,891 33,349
 521 6468745,199 508705,773 32,684
 522 6468748,476 508707,776 32,893
 523 6468749,244 508710,867 32,684
 524 6468750,878 508715,255 32,764
 525 6468749,989 508719,548 32,639
 526 6468745,387 508720,824 32,883
 527 6468744,545 508713,945 32,575
 528 6468758,976 508716,937 33,063
 529 6468758,800 508711,484 32,779
 530 6468758,910 508706,901 32,432
 531 6468760,508 508703,762 32,339
 532 6468762,141 508703,136 32,994
 533 6468767,088 508703,517 32,797
 534 6468767,303 508710,092 33,053
 535 6468765,575 508715,204 33,050
 536 6468766,686 508718,230 33,029

537 6468774,677 508715,358 33,084
 538 6468774,199 508710,724 32,984
 539 6468773,068 508705,882 32,898
 540 6468772,149 508702,117 32,520
 541 6468771,195 508700,633 33,028
 542 6468779,189 508700,333 32,773
 543 6468781,493 508705,788 32,905
 544 6468782,619 508709,900 33,023
 545 6468790,316 508706,797 32,758
 546 6468789,725 508701,646 32,705
 547 6468788,997 508696,512 32,414
 548 6468789,528 508695,003 32,851
 549 6468794,664 508692,550 32,448
 550 6468793,167 508691,252 33,276
 551 6468796,809 508698,466 32,747
 552 6468799,277 508704,394 32,815
 553 6468810,567 508701,457 32,675
 554 6468809,605 508695,897 32,768
 555 6468808,852 508692,180 32,770
 556 6468808,962 508688,621 32,388
 557 6468807,940 508686,995 32,661
 558 6468817,814 508684,079 32,294
 559 6468819,295 508690,108 32,374
 560 6468821,215 508694,934 32,548
 561 6468822,001 508700,742 32,526
 562 6468822,422 508703,056 32,407
 563 6468816,064 508704,839 32,470
 564 6468832,671 508699,806 32,330
 565 6468831,281 508695,553 32,478
 566 6468829,760 508691,335 32,390
 567 6468828,534 508686,880 32,343
 568 6468826,628 508682,065 32,282
 569 6468823,994 508676,681 32,036
 570 6468822,800 508674,889 32,945
 571 6468820,767 508677,078 32,350
 572 6468821,041 508674,556 32,971
 573 6468821,040 508674,723 33,240
 574 6468826,381 508671,191 31,824
 575 6468824,848 508671,194 32,881
 576 6468826,109 508667,151 31,736
 577 6468823,904 508668,845 33,238
 578 6468829,029 508666,183 31,581
 579 6468829,434 508669,283 31,705
 580 6468831,583 508674,483 32,163
 581 6468834,032 508680,457 32,291
 582 6468835,633 508686,228 32,315
 583 6468837,194 508688,584 32,313
 584 6468838,354 508690,963 32,584
 585 6468841,124 508697,016 32,416
 586 6468850,064 508694,053 32,510
 587 6468848,149 508688,480 32,721
 588 6468846,035 508684,344 33,031
 589 6468844,421 508680,123 32,581
 590 6468843,060 508676,515 32,437

591 6468841,720 508672,678 32,522
 592 6468841,007 508670,882 33,336
 593 6468837,782 508671,777 32,807
 594 6468839,048 508670,362 34,096
 595 6468845,917 508670,618 32,448
 596 6468844,682 508669,425 33,604
 597 6468846,686 508667,820 32,560
 598 6468844,906 508668,194 33,225
 599 6468849,014 508673,707 32,550
 600 6468851,747 508678,518 32,466
 601 6468854,031 508682,893 32,583
 602 6468855,428 508686,752 32,684
 603 6468857,976 508691,787 32,555
 604 6468862,991 508689,556 32,420
 605 6468868,299 508686,953 32,402
 606 6468865,929 508682,719 32,516
 607 6468864,180 508677,958 32,494
 608 6468861,726 508673,229 32,447
 609 6468859,675 508669,363 32,539
 610 6468859,122 508667,391 32,318
 611 6468859,402 508666,203 32,614
 612 6468866,202 508663,036 32,852
 613 6468867,495 508664,058 31,837
 614 6468863,926 508665,658 32,679
 615 6468865,317 508666,055 31,599
 616 6468864,098 508669,414 32,553
 617 6468865,308 508669,261 31,878
 618 6468865,461 508672,520 32,496
 619 6468866,558 508672,131 31,901
 620 6468866,579 508674,816 32,496
 621 6468867,323 508674,522 32,056
 622 6468868,063 508676,755 32,356
 623 6468871,061 508680,548 32,308
 624 6468874,743 508684,543 32,475
 625 6468869,716 508686,537 32,432
 626 6468877,330 508688,273 32,253
 627 6468880,358 508691,059 32,270
 628 6468882,857 508693,778 32,082
 629 6468884,666 508696,497 31,437
 630 6468886,983 508700,117 31,356
 631 6468888,312 508701,903 31,526
 632 6468890,046 508704,046 32,435
 633 6468881,402 508709,382 31,473
 634 6468883,822 508711,493 32,621
 635 6468880,319 508706,299 31,391
 636 6468878,590 508703,629 31,736
 637 6468875,453 508698,222 32,456
 638 6468873,474 508694,561 32,270
 639 6468870,320 508689,038 32,252
 640 6468864,212 508694,558 32,376
 641 6468865,557 508696,910 32,631
 642 6468866,829 508699,525 32,641
 643 6468868,211 508703,269 32,503
 644 6468870,788 508708,560 31,642

645 6468872,686 508715,197 31,399
 646 6468872,664 508717,039 32,360
 647 6468864,761 508717,615 31,493
 648 6468865,570 508719,239 32,173
 649 6468863,075 508713,737 31,544
 650 6468860,229 508705,487 31,844
 651 6468858,413 508700,836 32,310
 652 6468856,326 508695,802 32,599
 653 6468849,416 508698,118 32,558
 654 6468844,273 508698,268 32,403
 655 6468845,993 508700,502 32,448
 656 6468844,956 508701,202 32,074
 657 6468843,954 508702,150 32,192
 658 6468843,421 508702,761 32,617
 659 6468842,234 508700,270 32,243
 660 6468845,203 508704,376 32,352
 661 6468846,361 508703,990 31,904
 662 6468847,294 508703,726 31,954
 663 6468848,054 508703,078 32,320
 664 6468848,054 508706,267 31,907
 665 6468846,187 508706,949 31,936
 666 6468852,050 508702,976 32,126
 667 6468856,343 508708,149 31,931
 668 6468856,393 508708,138 31,831
 669 6468852,563 508708,098 31,870
 670 6468848,768 508709,982 31,780
 671 6468847,813 508712,726 31,673
 672 6468848,935 508714,731 31,927
 673 6468849,537 508717,712 31,745
 674 6468852,606 508718,185 31,859
 675 6468856,723 508716,805 31,747
 676 6468860,114 508714,015 31,744
 677 6468860,075 508710,716 31,816
 678 6468855,287 508711,630 33,941
 679 6468855,915 508713,135 33,688
 680 6468854,769 508714,115 33,550
 681 6468853,880 508712,690 33,967
 682 6468853,222 508710,962 33,900
 683 6468850,811 508710,936 33,272
 684 6468851,093 508713,904 32,900
 685 6468852,940 508715,627 32,945
 686 6468854,585 508716,004 32,780
 687 6468858,079 508719,678 31,589
 688 6468860,106 508722,222 31,657
 689 6468862,146 508724,926 32,585
 690 6468850,673 508723,180 31,488
 691 6468852,057 508726,617 31,559
 692 6468852,828 508728,188 32,068
 693 6468856,167 508725,078 31,656
 694 6468857,176 508727,200 32,420
 695 6468845,223 508730,531 31,688
 696 6468845,376 508732,610 32,988
 697 6468843,344 508725,946 31,653
 698 6468841,364 508720,423 31,848

699 6468839,533 508715,693 32,137
 700 6468838,248 508710,643 32,166
 701 6468837,036 508706,223 32,258
 702 6468829,420 508707,656 32,606
 703 6468829,131 508707,745 32,552
 704 6468830,903 508712,838 32,560
 705 6468833,211 508717,349 32,328
 706 6468834,427 508722,494 32,227
 707 6468835,947 508727,805 31,732
 708 6468837,848 508732,751 31,672
 709 6468838,753 508735,608 32,464
 710 6468833,246 508735,858 31,632
 711 6468833,102 508737,953 31,815
 712 6468834,139 508740,157 31,955
 713 6468829,383 508741,097 31,709
 714 6468827,868 508739,738 33,174
 715 6468828,312 508736,882 31,653
 716 6468827,081 508738,935 32,898
 717 6468826,444 508731,757 31,574
 718 6468825,463 508728,241 31,682
 719 6468824,143 508724,283 31,826
 720 6468822,565 508719,357 32,352
 721 6468820,880 508714,260 32,438
 722 6469057,983 508461,605 32,950
 723 6469056,606 508468,676 33,015
 724 6469060,951 508464,370 32,885
 725 6469062,097 508465,179 32,077
 726 6469064,348 508462,044 32,615
 727 6469064,908 508463,408 32,072
 728 6469067,672 508461,674 32,359
 729 6469066,995 508463,030 31,907
 730 6469070,237 508464,232 32,196
 731 6469069,120 508465,130 31,798
 732 6469071,043 508468,476 32,076
 733 6469069,948 508468,818 31,795
 734 6469071,356 508473,017 31,909
 735 6469070,096 508473,423 31,543
 736 6469071,601 508477,185 31,707
 737 6469070,208 508476,873 31,404
 738 6469071,710 508480,422 31,819
 739 6469070,792 508480,753 31,270
 740 6469071,750 508482,261 31,791
 741 6469069,842 508483,460 31,947
 742 6469069,168 508482,405 31,414
 743 6469066,704 508484,313 31,523
 744 6469067,060 508485,350 32,115
 745 6469063,839 508485,578 31,715
 746 6469063,744 508486,734 32,130
 747 6469059,484 508485,838 31,688
 748 6469059,965 508487,306 32,180
 749 6469057,865 508481,482 31,786
 750 6469062,690 508480,374 31,422
 751 6469067,340 508478,545 31,341
 752 6469066,554 508473,434 31,469

753	6469065,732	508467,834	31,833	807	6469028,659	508496,134	33,946
754	6469061,905	508472,085	31,738	808	6469029,880	508498,163	33,354
755	6469062,216	508475,072	31,451	809	6469028,509	508497,020	34,131
756	6469059,555	508471,459	31,800	810	6469026,490	508498,608	34,267
757	6469056,649	508473,806	31,833	811	6469027,190	508499,204	34,266
758	6469056,005	508472,161	32,602	812	6469027,875	508499,437	34,071
759	6469053,266	508473,737	32,222	813	6469027,071	508501,598	34,011
760	6469052,447	508472,388	32,976	814	6469025,998	508501,223	33,950
761	6469050,450	508475,863	32,311	815	6469025,853	508499,563	33,913
762	6469049,724	508474,806	32,753	816	6469022,877	508506,609	32,041
763	6469046,236	508476,695	32,483	817	6469021,314	508506,101	32,895
764	6469045,720	508475,546	32,770	818	6469020,723	508508,874	32,062
765	6469043,004	508477,377	32,661	819	6469020,045	508506,832	32,751
766	6469044,028	508479,258	32,599	820	6469017,810	508507,376	32,339
767	6469046,822	508480,602	32,330	821	6469017,155	508506,012	32,727
768	6469046,983	508483,248	31,976	822	6469015,685	508509,223	32,691
769	6469046,544	508486,202	31,581	823	6469017,982	508510,634	32,293
770	6469043,988	508489,304	31,639	824	6469015,779	508513,139	32,359
771	6469040,548	508492,460	31,678	825	6469014,672	508512,163	32,689
772	6469036,436	508496,284	31,712	826	6469012,723	508515,750	32,306
773	6469032,367	508498,923	31,968	827	6469012,205	508514,703	32,758
774	6469029,910	508502,582	31,870	828	6469009,554	508513,404	32,643
775	6469026,470	508504,601	32,142	829	6469008,696	508514,965	32,244
776	6469023,341	508502,638	32,085	830	6469006,390	508514,039	32,239
777	6469022,315	508503,381	32,173	831	6469005,722	508513,006	32,913
778	6469020,985	508503,190	32,937	832	6469004,339	508516,577	32,351
779	6469022,325	508500,525	32,243	833	6469003,618	508515,877	32,867
780	6469023,945	508500,586	32,851	834	6469002,646	508517,887	32,750
781	6469021,322	508500,050	32,833	835	6469003,623	508517,791	32,471
782	6469022,661	508497,481	32,378	836	6469008,661	508518,181	32,259
783	6469023,401	508497,205	32,548	837	6469012,638	508523,022	32,137
784	6469022,921	508496,587	32,454	838	6469015,782	508527,646	31,982
785	6469021,706	508497,041	32,588	839	6469019,543	508530,352	31,778
786	6469024,863	508494,848	32,663	840	6469022,810	508524,381	31,621
787	6469029,892	508490,719	32,811	841	6469019,382	508518,172	31,991
788	6469031,837	508487,528	32,868	842	6469020,756	508511,701	32,194
789	6469035,364	508484,685	32,696	843	6469024,490	508515,943	32,165
790	6469039,485	508481,916	32,688	844	6469027,538	508519,771	31,855
791	6469042,172	508479,746	32,624	845	6469030,535	508521,832	31,784
792	6469043,624	508483,454	34,389	846	6469034,792	508515,847	31,648
793	6469042,488	508481,683	34,200	847	6469031,000	508511,944	31,966
794	6469039,859	508484,649	33,708	848	6469027,732	508508,365	31,851
795	6469040,719	508485,791	33,678	849	6469034,124	508505,760	31,979
796	6469042,522	508486,761	34,012	850	6469037,315	508509,815	31,428
797	6469038,849	508489,640	34,045	851	6469038,957	508513,232	31,439
798	6469037,437	508488,302	33,647	852	6469041,123	508504,708	31,569
799	6469035,953	508486,368	33,646	853	6469035,842	508501,611	31,705
800	6469032,691	508490,155	33,766	854	6469040,884	508496,703	31,602
801	6469034,148	508491,991	33,759	855	6469043,894	508498,430	31,273
802	6469035,689	508493,117	33,706	856	6469047,103	508494,173	31,410
803	6469032,654	508495,448	33,677	857	6469044,469	508491,589	31,546
804	6469030,765	508494,158	33,920	858	6469049,082	508491,117	31,240
805	6469029,768	508493,317	34,045	859	6469047,561	508488,083	31,464
806	6469026,968	508496,463	33,967	860	6469051,117	508487,166	31,390

861 6469050,718 508481,738 32,126
 862 6469048,405 508478,387 32,429
 863 6469053,508 508477,360 31,890
 864 6469056,031 508482,086 31,757
 865 6469056,524 508487,288 31,599
 866 6469057,214 508488,403 32,198
 867 6469052,153 508491,895 31,506
 868 6469053,162 508492,480 31,970
 869 6469050,394 508495,472 31,327
 870 6469051,175 508496,083 31,851
 871 6469048,324 508499,500 32,090
 872 6469047,144 508499,138 31,375
 873 6469044,814 508503,850 31,681
 874 6469048,537 508504,531 31,793
 875 6469045,865 508509,676 31,954
 876 6469044,192 508510,625 31,547
 877 6469045,222 508514,248 31,452
 878 6469046,528 508517,668 32,690
 879 6469046,701 508513,775 31,342
 880 6469047,464 508511,965 31,479
 881 6469048,330 508509,343 31,947
 882 6469049,862 508515,237 31,251
 883 6469048,690 508517,162 32,365
 884 6469051,928 508516,200 31,973
 885 6469050,377 508512,571 31,403
 886 6469050,148 508510,359 32,081
 887 6469052,857 508507,766 32,221
 888 6469054,386 508510,017 31,260
 889 6469055,153 508511,269 31,358
 890 6469056,634 508512,948 32,153
 891 6469058,085 508509,148 31,285
 892 6469059,401 508511,879 32,101
 893 6469057,074 508508,528 31,264
 894 6469055,814 508506,421 31,851
 895 6469058,587 508503,395 31,887
 896 6469060,606 508504,664 31,640
 897 6469061,531 508505,928 31,368
 898 6469061,832 508507,102 31,218
 899 6469062,679 508508,568 31,684
 900 6469065,526 508509,180 31,346
 901 6469065,202 508506,718 31,213
 902 6469067,173 508506,036 31,316
 903 6469064,770 508503,620 31,374
 904 6469062,366 508501,258 31,495
 905 6469062,365 508501,257 31,485
 906 6469068,420 508503,748 31,325
 907 6469067,376 508500,274 31,543
 908 6469065,360 508496,398 31,668
 909 6469062,955 508495,081 32,465
 910 6469071,311 508498,570 31,556
 911 6469072,152 508498,342 31,420
 912 6469073,136 508497,919 31,580
 913 6469070,331 508495,557 31,444
 914 6469071,961 508496,009 31,349

915 6469073,245 508494,944 31,729
 916 6469071,467 508493,779 31,710
 917 6469069,972 508491,180 31,997
 918 6469065,955 508491,692 32,092
 919 6469064,303 508493,074 32,250
 920 6469069,185 508490,004 32,157
 921 6469071,377 508487,391 31,975
 922 6469071,139 508485,552 32,126
 923 6469068,448 508486,718 33,347
 924 6469068,465 508487,462 33,403
 925 6469065,855 508488,016 33,438
 926 6469066,112 508489,360 33,472
 927 6469063,817 508488,716 32,908
 928 6469063,497 508490,224 32,407
 929 6469060,270 508488,757 33,227
 930 6469060,407 508489,812 33,294
 931 6469061,608 508491,049 32,563
 932 6469060,898 508493,650 32,704
 933 6469057,813 508492,488 32,600
 934 6469056,172 508495,346 32,644
 935 6469058,589 508497,176 32,844
 936 6469053,599 508499,149 31,919
 937 6469055,638 508501,215 32,185
 938 6469051,296 508503,988 31,972
 939 6469049,979 508507,236 32,411
 940 6469047,093 508505,852 31,824
 941 6469041,902 508515,617 31,370
 942 6469041,508 508519,423 31,447
 943 6469038,753 508521,942 31,516
 944 6469037,753 508524,121 31,985
 945 6469040,322 508525,411 31,530
 946 6469039,377 508527,364 31,745
 947 6469037,391 508526,325 32,332
 948 6469040,917 508527,310 31,744
 949 6469042,728 508528,390 32,705
 950 6469042,098 508523,376 31,486
 951 6469041,553 508518,715 31,576
 952 6469045,476 508518,489 32,741
 953 6469051,980 508519,629 32,706
 954 6469045,000 508520,840 32,953
 955 6469047,643 508522,689 33,062
 956 6469047,004 508518,742 32,844
 957 6469044,150 508517,889 32,283
 958 6469036,336 508520,877 31,409
 959 6469033,355 508525,957 31,807
 960 6469030,488 508522,779 31,792
 961 6469028,551 508523,130 31,648
 962 6469026,095 508527,115 31,534
 963 6469028,805 508530,296 31,729
 964 6469031,014 508532,127 32,078
 965 6469022,975 508531,343 31,787
 966 6469025,464 508535,738 31,796
 967 6469027,626 508537,368 32,172
 968 6469018,852 508535,920 31,794

969 6469020,739 508538,106 31,676
 970 6469022,372 508540,401 32,366
 971 6469017,957 508541,596 31,813
 972 6469020,604 508544,092 32,717
 973 6469013,657 508542,768 31,924
 974 6469015,234 508547,784 32,288
 975 6469012,778 508546,079 32,244
 976 6469012,965 508540,636 31,702
 977 6469010,254 508542,046 32,189
 978 6469011,511 508538,017 31,717
 979 6469008,485 508535,256 31,963
 980 6469004,717 508531,171 31,973
 981 6468998,130 508535,580 31,944
 982 6469001,009 508540,198 31,925
 983 6469003,527 508543,922 32,173
 984 6469005,721 508546,353 32,091
 985 6469007,658 508548,917 33,293
 986 6469001,723 508552,667 32,259
 987 6468999,176 508548,544 32,067
 988 6468996,341 508543,361 31,892
 989 6468993,832 508539,708 32,012
 990 6468990,876 508536,255 32,120
 991 6468987,304 508538,186 32,189
 992 6468984,230 508538,316 32,369
 993 6468982,813 508536,191 32,807
 994 6468983,658 508533,184 33,189
 995 6468986,479 508529,662 33,218
 996 6468988,653 508526,799 33,217
 997 6468990,971 508525,015 33,104
 998 6468993,828 508522,715 33,010
 999 6468995,951 508520,838 33,040
 1000 6468998,388 508519,217 33,046
 1001 6469002,117 508518,390 32,848
 1002 6469005,512 508518,890 32,440
 1003 6469006,587 508520,901 32,284
 1004 6469006,537 508524,594 32,035
 1005 6469004,816 508527,365 32,117
 1006 6469002,079 508529,701 32,060
 1007 6468997,463 508532,106 32,097
 1008 6468994,881 508533,569 32,110
 1009 6468995,657 508528,402 34,919
 1010 6468994,198 508526,327 34,659
 1011 6468990,894 508529,128 34,914
 1012 6468992,248 508530,466 34,919
 1013 6468990,024 508532,451 34,567
 1014 6468989,261 508531,593 34,317
 1015 6468986,830 508533,688 34,476
 1016 6468987,684 508534,368 34,411
 1017 6468985,913 508535,304 34,428
 1018 6468985,914 508535,306 34,433
 1019 6468985,503 508534,731 34,392
 1020 6468995,503 508524,737 34,586
 1021 6468996,851 508526,222 34,498
 1022 6468998,312 508527,702 34,256

1023 6469000,480 508526,326 34,152
 1024 6468999,464 508524,207 34,293
 1025 6468998,202 508521,891 34,205
 1026 6469001,301 508520,702 34,175
 1027 6469002,837 508521,708 34,013
 1028 6469004,077 508523,856 33,678
 1029 6468994,150 508551,008 31,809
 1030 6468992,059 508551,278 32,506
 1031 6468998,055 508552,592 31,962
 1032 6468999,403 508554,084 32,222
 1033 6468996,736 508558,930 31,757
 1034 6468997,850 508559,329 32,215
 1035 6468997,826 508559,292 32,176
 1036 6468998,476 508561,607 32,046
 1037 6468998,635 508561,612 31,910
 1038 6468999,748 508563,101 31,635
 1039 6469001,058 508565,059 31,677
 1040 6469002,192 508566,826 32,918
 1041 6468992,348 508557,409 31,840
 1042 6468991,220 508555,769 32,627
 1043 6468988,722 508558,551 32,202
 1044 6468988,667 508556,319 32,540
 1045 6468987,403 508560,306 32,089
 1046 6468984,976 508560,084 33,411
 1047 6468986,071 508564,117 32,053
 1048 6468983,721 508563,520 33,000
 1049 6468993,856 508549,136 32,013
 1050 6468991,548 508549,520 33,008
 1051 6468991,556 508549,566 33,088
 1052 6468990,534 508546,046 32,261
 1053 6468990,142 508548,320 33,087
 1054 6468985,701 508548,847 32,341
 1055 6468987,229 508549,901 32,673
 1056 6468982,967 508545,566 31,960
 1057 6468979,507 508541,463 32,299
 1058 6468975,550 508536,315 33,051
 1059 6468979,976 508531,733 33,136
 1060 6468986,410 508526,023 33,182
 1061 6468993,179 508519,679 32,962
 1062 6469000,709 508513,232 32,888
 1063 6469009,508 508508,901 32,722
 1064 6469014,868 508500,562 32,793
 1065 6469021,199 508493,244 32,690
 1066 6469028,169 508486,458 32,700
 1067 6469034,825 508479,966 32,755
 1068 6469042,972 508473,680 32,751
 1069 6469050,120 508468,149 32,861
 1070 6469058,466 508461,001 32,945
 1071 6469067,274 508456,035 32,495
 1072 6469065,050 508449,043 32,574
 1073 6469058,246 508455,342 32,871
 1074 6469054,235 508461,296 32,917
 1075 6469051,217 508457,504 33,096
 1076 6469044,568 508463,285 32,940

1077 6469046,895 508467,100 33,048
 1078 6469042,236 508470,482 32,673
 1079 6469038,026 508468,063 32,779
 1080 6469036,841 508474,217 32,825
 1081 6469031,539 508479,133 32,623
 1082 6469031,635 508479,087 32,595
 1083 6469026,475 508484,120 32,663
 1084 6469020,866 508487,804 32,634
 1085 6469017,711 508483,717 32,547
 1086 6469016,861 508482,471 31,986
 1087 6469014,541 508484,853 32,276
 1088 6469016,333 508485,795 32,593
 1089 6469013,412 508488,930 32,399
 1090 6469014,643 508489,726 32,794
 1091 6469011,838 508492,491 32,488
 1092 6469017,610 508492,219 32,700
 1093 6469010,735 508497,937 32,723
 1094 6469007,896 508495,678 32,246
 1095 6469003,689 508504,996 32,809
 1096 6469000,851 508501,437 32,420
 1097 6468998,192 508510,280 32,863
 1098 6468994,366 508505,623 32,887
 1099 6468992,674 508515,747 32,809
 1100 6468988,677 508513,416 32,396
 1101 6468985,327 508521,978 33,163
 1102 6468984,228 508520,095 32,767
 1103 6468978,159 508527,722 33,105
 1104 6468975,630 508524,805 32,660
 1105 6468969,854 508527,690 32,681
 1106 6468972,044 508532,562 33,210
 1107 6468962,406 508531,557 32,597
 1108 6468964,095 508532,920 33,112
 1109 6468967,315 508536,138 33,035
 1110 6468970,545 508539,668 32,838
 1111 6468975,533 508544,693 32,592
 1112 6468978,638 508547,700 32,150
 1113 6468981,222 508551,769 32,285
 1114 6468984,489 508555,193 32,439
 1115 6468985,526 508555,605 33,365
 1116 6468980,618 508556,644 32,124
 1117 6468981,647 508558,292 34,457
 1118 6468978,435 508560,986 32,123
 1119 6468979,818 508561,326 34,338
 1120 6468978,731 508566,741 32,099
 1121 6468980,814 508566,819 33,796
 1122 6468977,599 508573,217 31,961
 1123 6468979,368 508573,374 32,708
 1124 6468979,409 508575,713 32,270
 1125 6468969,698 508571,063 32,150
 1126 6468971,209 508563,322 32,168
 1127 6468972,982 508557,942 32,107
 1128 6468974,396 508554,232 32,429
 1129 6468971,051 508550,603 32,454
 1130 6468968,218 508548,145 32,757

1131 6468964,289 508546,110 32,868
 1132 6468960,605 508551,900 32,917
 1133 6468965,644 508556,808 32,525
 1134 6468968,541 508558,664 32,310
 1135 6468967,909 508563,406 32,294
 1136 6468963,594 508560,878 32,424
 1137 6468960,139 508559,176 32,494
 1138 6468957,549 508558,484 32,985
 1139 6468954,851 508564,931 33,017
 1140 6468957,338 508566,937 33,056
 1141 6468959,041 508568,657 34,337
 1142 6468959,475 508566,127 32,677
 1143 6468961,845 508567,447 32,502
 1144 6468962,069 508569,761 32,442
 1145 6468960,211 508571,573 32,235
 1146 6468958,295 508571,342 32,359
 1147 6468956,608 508569,173 33,021
 1148 6468964,376 508572,240 32,075
 1149 6468968,411 508575,751 31,873
 1150 6468970,612 508577,237 32,056
 1151 6468973,206 508580,054 32,286
 1152 6468975,640 508583,096 32,295
 1153 6468977,562 508585,625 32,428
 1154 6468982,274 508581,818 32,373
 1155 6468982,394 508580,160 33,563
 1156 6468985,749 508578,453 32,185
 1157 6468984,382 508577,467 33,134
 1158 6468972,197 508589,523 32,299
 1159 6468971,317 508589,167 33,578
 1160 6468971,237 508585,721 31,939
 1161 6468970,989 508587,830 33,409
 1162 6468968,001 508585,399 31,762
 1163 6468969,239 508587,578 33,388
 1164 6468965,255 508588,932 31,900
 1165 6468966,929 508590,074 33,288
 1166 6468964,383 508591,675 31,916
 1167 6468966,894 508591,914 33,477
 1168 6468964,262 508593,787 31,934
 1169 6468965,977 508594,801 33,079
 1170 6468963,123 508594,052 32,000
 1171 6468962,991 508595,686 32,666
 1172 6468959,826 508593,596 31,995
 1173 6468958,908 508594,503 32,883
 1174 6468957,263 508592,346 32,134
 1175 6468957,741 508593,823 33,181
 1176 6468953,243 508594,331 32,052
 1177 6468954,268 508595,607 32,936
 1178 6468951,823 508595,970 32,179
 1179 6468953,759 508596,635 32,989
 1180 6468952,001 508600,538 32,209
 1181 6468954,426 508599,945 32,897
 1182 6468953,334 508605,122 32,024
 1183 6468955,351 508604,808 32,678
 1184 6468955,337 508607,753 32,035

1185 6468956,369 508606,529 32,738
 1186 6468958,464 508609,847 32,041
 1187 6468960,167 508609,072 33,522
 1188 6468954,632 508609,727 31,922
 1189 6468954,500 508612,561 32,259
 1190 6468952,079 508608,049 32,014
 1191 6468950,360 508608,679 32,606
 1192 6468949,959 508604,384 32,006
 1193 6468948,559 508605,905 32,618
 1194 6468946,920 508601,569 31,974
 1195 6468947,004 508603,832 32,452
 1196 6468947,003 508603,849 32,517
 1197 6468943,527 508606,412 32,072
 1198 6468943,550 508606,386 31,999
 1199 6468945,106 508607,189 32,629
 1200 6468940,119 508604,217 32,130
 1201 6468938,949 508603,022 33,246
 1202 6468938,918 508603,007 33,242
 1203 6468942,679 508600,322 32,059
 1204 6468940,846 508599,717 33,488
 1205 6468946,738 508599,268 31,882
 1206 6468945,061 508596,493 32,162
 1207 6468947,222 508593,287 32,099
 1208 6468949,632 508595,167 32,173
 1209 6468950,286 508592,398 32,000
 1210 6468953,655 508590,143 32,043
 1211 6468954,738 508586,454 32,119
 1212 6468959,898 508585,399 32,010
 1213 6468958,982 508581,980 32,093
 1214 6468954,703 508583,770 31,984
 1215 6468954,754 508580,121 32,186
 1216 6468954,557 508577,934 32,247
 1217 6468952,977 508575,470 32,758
 1218 6468955,925 508573,641 32,925
 1219 6468960,060 508574,787 32,061
 1220 6468961,795 508577,351 32,060
 1221 6468952,233 508575,624 32,911
 1222 6468948,894 508575,563 32,812
 1223 6468947,344 508577,729 32,805
 1224 6468948,109 508580,064 32,911
 1225 6468946,163 508583,061 32,892
 1226 6468944,392 508585,738 32,942
 1227 6468943,978 508588,703 32,908
 1228 6468941,358 508591,114 32,923
 1229 6468942,866 508592,543 34,238
 1230 6468939,223 508595,081 32,951
 1231 6468941,029 508595,238 33,901
 1232 6468938,267 508598,624 32,805
 1233 6468939,759 508598,700 33,665
 1234 6468936,722 508601,630 32,727
 1235 6468938,235 508601,803 33,717
 1236 6468937,064 508603,351 32,595
 1237 6468944,314 508590,935 34,355
 1238 6468944,779 508591,369 34,421

1239 6468944,796 508591,346 34,370
 1240 6468943,237 508593,196 34,458
 1241 6468942,861 508592,724 34,356
 1242 6468946,034 508589,232 34,234
 1243 6468946,453 508589,772 34,244
 1244 6468948,106 508588,251 35,152
 1245 6468947,640 508587,769 35,101
 1246 6468947,978 508586,678 35,409
 1247 6468949,484 508587,617 35,205
 1248 6468950,128 508584,695 35,044
 1249 6468949,526 508584,832 35,137
 1250 6468951,326 508582,202 34,267
 1251 6468950,490 508582,315 34,353
 1252 6468951,340 508579,679 34,347
 1253 6468950,768 508579,639 34,497
 1254 6468950,394 508578,336 34,370
 1255 6468951,503 508578,431 34,335
 1256 6468945,304 508580,279 32,684
 1257 6468942,641 508585,278 32,913
 1258 6468940,110 508590,169 32,890
 1259 6468937,904 508594,717 32,876
 1260 6468935,496 508600,026 32,781
 1261 6468933,274 508606,335 32,534
 1262 6468936,856 508609,451 32,250
 1263 6468940,485 508612,354 32,244
 1264 6468942,205 508613,856 32,599
 1265 6468946,229 508614,998 32,444
 1266 6468947,351 508616,237 32,592
 1267 6468949,861 508617,451 32,545
 1268 6468948,347 508625,713 32,299
 1269 6468944,947 508623,356 32,661
 1270 6468941,615 508622,099 32,723
 1271 6468938,855 508621,051 32,383
 1272 6468936,160 508619,450 32,072
 1273 6468932,683 508617,512 32,408
 1274 6468928,981 508616,515 32,510
 1275 6468926,965 508622,237 32,499
 1276 6468925,968 508625,852 32,425
 1277 6468932,534 508626,246 32,401
 1278 6468936,144 508629,025 32,363
 1279 6468938,670 508630,939 32,674
 1280 6468940,741 508632,677 32,615
 1281 6468937,836 508638,787 32,678
 1282 6468935,030 508637,493 32,544
 1283 6468931,675 508635,747 32,631
 1284 6468928,037 508633,282 32,652
 1285 6468923,603 508631,668 32,422
 1286 6468921,178 508637,377 32,538
 1287 6468918,391 508642,755 32,383
 1288 6468924,085 508641,563 32,523
 1289 6468927,792 508643,961 32,549
 1290 6468931,437 508646,626 32,397
 1291 6468926,983 508651,260 32,404
 1292 6468922,465 508647,909 32,411

1293 6468918,874 508645,947 32,284
 1294 6468916,460 508645,158 32,379
 1295 6468913,871 508649,217 32,508
 1296 6468917,076 508652,313 32,445
 1297 6468919,630 508654,967 32,357
 1298 6468921,033 508657,285 32,136
 1299 6468919,494 508661,394 31,494
 1300 6468919,357 508662,796 31,771
 1301 6468921,108 508664,941 33,087
 1302 6468918,362 508663,359 31,625
 1303 6468918,011 508662,697 31,741
 1304 6468916,567 508661,143 32,485
 1305 6468919,647 508660,248 31,940
 1306 6468917,417 508659,849 32,363
 1307 6468915,192 508667,292 31,712
 1308 6468916,521 508668,238 32,543
 1309 6468914,014 508665,521 31,647
 1310 6468913,166 508662,933 32,748
 1311 6468914,212 508661,335 32,990
 1312 6468914,156 508661,052 32,919
 1313 6468913,980 508660,035 32,302
 1314 6468912,271 508662,597 33,013
 1315 6468911,375 508661,858 32,401
 1316 6468908,798 508665,025 32,489
 1317 6468910,045 508665,450 32,813
 1318 6468911,726 508667,532 31,735
 1319 6468913,120 508669,572 31,543
 1320 6468915,547 508670,463 32,195
 1321 6468914,545 508674,530 32,367
 1322 6468911,784 508672,908 31,658
 1323 6468909,429 508671,562 31,725
 1324 6468907,083 508670,642 33,268
 1325 6468906,058 508670,238 33,231
 1326 6468904,728 508669,459 32,566
 1327 6468903,024 508672,664 32,480
 1328 6468904,538 508674,224 33,087
 1329 6468905,019 508674,752 33,201
 1330 6468903,133 508677,417 32,827
 1331 6468902,624 508676,523 32,889
 1332 6468901,338 508675,270 32,500
 1333 6468899,193 508677,530 32,235
 1334 6468899,401 508678,909 32,927
 1335 6468899,443 508679,393 32,859
 1336 6468901,010 508680,494 32,083
 1337 6468896,989 508680,895 32,312
 1338 6468897,236 508679,125 32,964
 1339 6468897,346 508678,633 32,975
 1340 6468897,023 508677,587 32,375
 1341 6468895,000 508678,831 32,638
 1342 6468892,669 508677,642 32,482
 1343 6468893,437 508679,908 32,187
 1344 6468893,868 508679,080 32,701
 1345 6468891,900 508680,111 32,220
 1346 6468891,082 508681,714 32,894

1347 6468889,973 508679,316 32,463
 1348 6468892,695 508683,851 32,961
 1349 6468894,271 508682,039 31,970
 1350 6468895,250 508680,493 32,295
 1351 6468897,519 508682,918 31,879
 1352 6468896,687 508683,921 31,995
 1353 6468894,103 508685,302 33,266
 1354 6468896,738 508686,503 31,744
 1355 6468898,621 508689,045 31,495
 1356 6468903,639 508684,078 31,629
 1357 6468902,804 508682,075 31,639
 1358 6468907,351 508679,426 31,643
 1359 6468905,941 508678,060 31,791
 1360 6468906,880 508676,188 31,721
 1361 6468909,067 508678,027 31,458
 1362 6468909,999 508680,044 31,623
 1363 6468911,562 508681,263 32,181
 1364 6468906,791 508684,065 31,690
 1365 6468908,726 508685,654 32,318
 1366 6468903,744 508688,483 31,700
 1367 6468905,533 508689,315 32,677
 1368 6468902,818 508690,938 31,762
 1369 6468905,845 508691,212 33,449
 1370 6468907,732 508693,617 33,097
 1371 6468905,322 508695,525 31,665
 1372 6468909,307 508695,831 31,633
 1373 6468908,911 508702,514 31,503
 1374 6468908,110 508703,195 31,057
 1375 6468906,941 508703,894 30,996
 1376 6468906,069 508704,247 31,749
 1377 6468904,143 508705,790 31,697
 1378 6468902,986 508704,540 33,194
 1379 6468902,253 508702,302 32,778
 1380 6468903,720 508701,374 31,736
 1381 6468904,517 508700,674 31,691
 1382 6468905,549 508700,195 30,922
 1383 6468906,064 508699,829 30,921
 1384 6468906,806 508698,924 31,536
 1385 6468904,808 508694,172 31,887
 1386 6468903,836 508695,102 31,592
 1387 6468903,096 508695,608 30,964
 1388 6468902,484 508696,003 31,035
 1389 6468901,621 508696,878 31,623
 1390 6468900,677 508697,937 31,769
 1391 6468900,300 508699,240 32,714
 1392 6468895,896 508698,665 33,033
 1393 6468896,413 508696,467 31,636
 1394 6468899,719 508693,925 31,398
 1395 6468899,706 508692,840 30,998
 1396 6468899,428 508691,284 31,412
 1397 6468895,886 508692,614 31,247
 1398 6468895,604 508693,338 31,080
 1399 6468895,523 508694,250 31,325
 1400 6468891,975 508695,522 31,137

1401 6468892,427 508696,620 31,649
 1402 6468893,835 508698,874 32,989
 1403 6468889,356 508700,266 31,530
 1404 6468891,285 508701,259 32,727
 1405 6468888,064 508694,341 31,322
 1406 6468892,663 508691,303 31,226
 1407 6468895,602 508691,527 31,303
 1408 6468894,170 508688,143 31,826
 1409 6468890,282 508688,514 31,774
 1410 6468886,767 508690,480 31,793
 1411 6468885,122 508687,392 32,184
 1412 6468889,014 508687,016 32,092
 1413 6468890,221 508685,798 33,287
 1414 6468889,819 508684,004 32,872
 1415 6468888,556 508683,039 32,395
 1416 6468891,554 508684,891 33,098
 1417 6468891,840 508686,773 32,863
 1418 6468893,676 508685,991 33,230
 1419 6468884,122 508680,760 32,581
 1420 6468890,970 508673,711 32,521
 1421 6468896,903 508674,724 32,412
 1422 6468898,698 508665,557 32,883
 1423 6468900,507 508667,506 32,316
 1424 6468906,481 508660,419 32,556
 1425 6468906,208 508657,598 32,536
 1426 6468912,193 508652,987 32,519
 1427 6468915,770 508644,164 32,448
 1428 6468920,806 508633,865 32,861
 1429 6468924,972 508623,951 32,494
 1430 6468929,471 508613,073 32,502
 1431 6468936,267 508590,592 32,822
 1432 6468932,650 508599,076 32,699
 1433 6468928,473 508608,941 32,572
 1434 6468924,931 508618,434 32,538
 1435 6468920,268 508628,916 32,355
 1436 6468914,881 508639,742 32,490
 1437 6468910,852 508645,957 32,563
 1438 6468906,079 508651,799 32,411
 1439 6468902,725 508655,734 32,688
 1440 6468900,546 508652,638 32,526
 1441 6468899,660 508655,325 32,472
 1442 6468896,846 508658,232 32,440
 1443 6468898,410 508660,852 32,736
 1444 6468894,281 508660,154 32,527
 1445 6468890,689 508663,882 32,665
 1446 6468892,509 508667,012 32,689
 1447 6468888,131 508671,427 32,538
 1448 6468887,373 508665,842 32,696
 1449 6468882,256 508669,430 32,584
 1450 6468878,896 508671,117 32,487
 1451 6468883,188 508674,149 32,312
 1452 6468879,315 508678,175 32,389
 1453 6468875,131 508673,068 32,449
 1454 6468870,741 508673,673 32,646

1455 6468868,833 508671,790 32,502
 1456 6468867,177 508672,267 31,894
 1457 6468867,888 508670,603 32,664
 1458 6468866,981 508669,735 31,802
 1459 6468869,569 508670,092 32,690
 1460 6468868,977 508668,644 31,689
 1461 6468869,574 508670,580 32,866
 1462 6468871,591 508670,607 33,934
 1463 6468871,714 508671,353 34,018
 1464 6468873,957 508669,378 34,252
 1465 6468874,454 508669,914 34,164
 1466 6468878,266 508667,820 34,745
 1467 6468877,705 508667,166 34,723
 1468 6468881,756 508665,833 34,758
 1469 6468881,248 508665,141 34,721
 1470 6468885,111 508664,167 34,105
 1471 6468884,781 508663,647 34,150
 1472 6468887,662 508662,347 34,445
 1473 6468887,199 508661,872 34,365
 1474 6468890,989 508660,109 34,278
 1475 6468890,284 508659,755 34,362
 1476 6468893,258 508657,859 34,055
 1477 6468892,758 508657,246 34,222
 1478 6468895,316 508654,835 34,047
 1479 6468895,889 508655,315 34,143
 1480 6468897,706 508652,848 33,862
 1481 6468898,273 508653,432 33,819
 1482 6468900,466 508652,767 32,510
 1483 6468899,457 508651,366 32,512
 1484 6468897,162 508650,407 32,267
 1485 6468893,743 508652,079 32,086
 1486 6468889,417 508655,731 32,094
 1487 6468885,388 508658,975 32,059
 1488 6468882,293 508661,158 32,094
 1489 6468879,017 508661,315 31,973
 1490 6468875,960 508662,977 31,910
 1491 6468873,950 508664,939 31,843
 1492 6468871,291 508667,020 31,660
 1493 6468870,029 508665,220 31,533
 1494 6468871,799 508664,113 31,380
 1495 6468872,381 508661,830 31,363
 1496 6468869,165 508660,950 31,608
 1497 6468869,214 508659,569 32,444
 1498 6468873,384 508657,012 32,485
 1499 6468874,526 508658,129 31,696
 1500 6468876,021 508660,031 31,787
 1501 6468881,209 508656,389 31,764
 1502 6468879,102 508653,316 31,900
 1503 6468878,322 508652,337 32,592
 1504 6468881,380 508650,692 31,971
 1505 6468880,596 508650,220 32,305
 1506 6468884,506 508653,725 31,767
 1507 6468887,993 508651,266 31,752
 1508 6468885,128 508647,493 31,829

1509 6468883,657 508645,726 32,039
 1510 6468881,393 508642,034 31,878
 1511 6468877,916 508638,252 31,914
 1512 6468874,986 508634,281 32,046
 1513 6468876,967 508633,144 32,061
 1514 6468878,532 508633,284 32,750
 1515 6468877,782 508630,756 32,286
 1516 6468878,952 508631,176 33,262
 1517 6468879,930 508629,718 32,282
 1518 6468880,081 508630,683 33,542
 1519 6468880,035 508626,913 32,292
 1520 6468880,832 508625,979 33,130
 1521 6468880,868 508626,028 33,092
 1522 6468880,770 508623,516 33,444
 1523 6468879,369 508623,374 32,233
 1524 6468879,504 508623,265 32,067
 1525 6468879,378 508627,142 32,112
 1526 6468881,731 508627,779 32,423
 1527 6468881,905 508626,219 33,386
 1528 6468877,971 508629,563 32,094
 1529 6468884,041 508626,653 32,195
 1530 6468883,545 508625,293 32,670
 1531 6468882,703 508631,257 32,096
 1532 6468881,878 508631,477 32,980
 1533 6468882,416 508634,220 31,984
 1534 6468881,355 508633,971 32,428
 1535 6468884,716 508636,386 32,731
 1536 6468885,253 508637,303 32,808
 1537 6468886,090 508639,103 32,121
 1538 6468888,344 508642,340 32,262
 1539 6468891,691 508644,313 31,910
 1540 6468895,079 508647,310 32,112
 1541 6468899,082 508648,810 32,361
 1542 6468902,290 508648,137 32,336
 1543 6468899,994 508647,193 32,314
 1544 6468900,921 508643,637 32,062
 1545 6468903,603 508640,201 32,079
 1546 6468905,435 508637,756 31,975
 1547 6468906,427 508635,928 32,008
 1548 6468908,538 508634,920 32,296
 1549 6468911,018 508634,963 32,540
 1550 6468911,503 508636,726 32,585
 1551 6468909,635 508636,557 33,400
 1552 6468910,301 508637,146 33,334
 1553 6468910,772 508638,536 32,496
 1554 6468907,281 508639,391 33,648
 1555 6468907,921 508639,968 33,613
 1556 6468908,924 508641,264 32,540
 1557 6468904,976 508642,038 33,529
 1558 6468905,745 508642,401 33,402
 1559 6468907,257 508643,306 32,603
 1560 6468903,314 508644,241 33,540
 1561 6468904,078 508644,944 33,562
 1562 6468905,477 508645,826 32,570

1563 6468902,535 508645,760 33,841
 1564 6468903,193 508646,169 33,662
 1565 6468903,813 508648,048 32,458
 1566 6468901,367 508647,758 32,556
 1567 6468899,974 508646,426 32,362
 1568 6468898,315 508642,061 31,947
 1569 6468901,668 508636,928 32,138
 1570 6468904,055 508632,532 32,065
 1571 6468904,277 508631,208 32,339
 1572 6468900,493 508630,525 32,501
 1573 6468900,996 508632,691 32,354
 1574 6468897,486 508635,938 32,123
 1575 6468896,734 508635,308 32,241
 1576 6468894,237 508640,069 31,952
 1577 6468892,758 508638,216 32,419
 1578 6468891,601 508634,569 32,295
 1579 6468896,807 508629,273 32,476
 1580 6468894,177 508626,334 32,658
 1581 6468898,258 508622,616 32,541
 1582 6468900,878 508625,226 32,770
 1583 6468897,256 508617,565 32,344
 1584 6468893,896 508614,973 32,124
 1585 6468892,915 508613,039 33,344
 1586 6468900,951 508611,044 32,227
 1587 6468899,018 508609,869 33,439
 1588 6468904,395 508605,679 32,523
 1589 6468902,864 508604,552 33,876
 1590 6468903,036 508604,844 33,957
 1591 6468907,898 508611,190 32,394
 1592 6468911,249 508614,431 32,304
 1593 6468909,606 508618,750 32,035
 1594 6468905,793 508617,270 32,251
 1595 6468907,441 508621,399 32,043
 1596 6468910,773 508624,127 32,180
 1597 6468904,483 508622,339 32,125
 1598 6468906,328 508625,368 32,121
 1599 6468909,764 508627,888 32,221
 1600 6468913,124 508630,038 32,504
 1601 6468914,268 508626,625 32,240
 1602 6468917,765 508624,921 32,309
 1603 6468915,111 508624,524 32,305
 1604 6468912,545 508621,621 32,327
 1605 6468913,739 508617,671 32,523
 1606 6468915,972 508616,166 32,919
 1607 6468918,592 508616,803 33,499
 1608 6468918,805 508616,655 33,384
 1609 6468919,721 508617,618 33,343
 1610 6468920,870 508618,810 32,820
 1611 6468920,536 508621,571 32,722
 1612 6468919,119 508623,327 32,729
 1613 6468917,253 508620,357 35,247
 1614 6468917,907 508619,509 35,185
 1615 6468917,365 508619,170 35,170
 1616 6468916,806 508619,801 35,314

1617 6468921,454 508615,696 33,031
 1618 6468918,304 508613,998 33,061
 1619 6468923,028 508611,685 32,758
 1620 6468922,508 508610,659 32,180
 1621 6468919,289 508611,768 32,959
 1622 6468919,970 508610,111 32,055
 1623 6468916,078 508610,078 32,909
 1624 6468917,379 508609,576 32,130
 1625 6468914,869 508605,309 32,476
 1626 6468916,717 508605,291 31,920
 1627 6468916,791 508601,816 32,506
 1628 6468918,192 508602,123 31,889
 1629 6468917,416 508598,398 32,371
 1630 6468918,695 508599,121 32,010
 1631 6468920,055 508593,767 32,377
 1632 6468921,020 508594,412 32,053
 1633 6468922,114 508589,720 32,385
 1634 6468922,893 508590,642 32,103
 1635 6468924,326 508587,251 32,335
 1636 6468925,605 508587,870 32,043
 1637 6468925,701 508583,990 32,259
 1638 6468927,153 508584,217 31,884
 1639 6468927,288 508579,933 32,124
 1640 6468928,144 508580,550 31,777
 1641 6468929,265 508583,399 32,058
 1642 6468929,831 508585,780 32,073
 1643 6468931,554 508586,550 32,154
 1644 6468933,812 508586,365 32,247
 1645 6468935,399 508585,510 32,902
 1646 6468932,880 508588,589 32,172
 1647 6468933,837 508589,228 32,824
 1648 6468931,646 508591,614 32,384
 1649 6468932,240 508591,970 32,645
 1650 6468928,329 508590,999 32,191
 1651 6468928,874 508595,657 32,302
 1652 6468929,652 508596,109 32,670
 1653 6468926,010 508594,642 31,999
 1654 6468926,985 508600,925 32,150
 1655 6468927,833 508601,358 32,560
 1656 6468923,942 508599,739 31,970
 1657 6468924,973 508605,534 32,181
 1658 6468926,009 508606,386 32,572
 1659 6468922,065 508604,365 31,918
 1660 6468923,819 508609,303 32,260
 1661 6468924,896 508609,820 32,558
 1662 6468920,981 508607,906 31,976
 1663 6468914,621 508610,547 32,617
 1664 6468911,052 508608,913 32,405
 1665 6468908,531 508607,864 33,089
 1666 6468907,190 508607,181 32,760
 1667 6468907,124 508606,976 32,561
 1668 6468905,459 508605,378 32,585
 1669 6468905,450 508605,401 32,500
 1670 6468903,590 508604,689 33,560

1671 6468904,374 508602,053 32,239
 1672 6468903,748 508603,047 33,711
 1673 6468904,534 508599,873 32,183
 1674 6468903,340 508599,761 32,937
 1675 6468905,553 508597,161 32,175
 1676 6468904,718 508596,359 32,588
 1677 6468907,160 508595,023 32,337
 1678 6468906,102 508594,229 33,862
 1679 6468910,210 508598,067 32,357
 1680 6468912,913 508599,938 32,326
 1681 6468915,026 508593,643 32,128
 1682 6468910,431 508589,914 32,070
 1683 6468908,417 508589,548 33,666
 1684 6468910,819 508588,376 32,112
 1685 6468908,779 508588,146 32,736
 1686 6468914,209 508584,929 32,187
 1687 6468913,546 508584,087 32,514
 1688 6468912,919 508583,117 34,429
 1689 6468918,601 508586,985 32,230
 1690 6468920,506 508581,077 32,275
 1691 6468915,604 508579,261 32,107
 1692 6468913,889 508578,113 34,201
 1693 6468916,156 508574,033 32,042
 1694 6468914,267 508574,193 34,097
 1695 6468919,195 508576,657 31,982
 1696 6468922,872 508578,630 32,074
 1697 6468927,420 508572,421 32,075
 1698 6468924,191 508568,926 32,076
 1699 6468921,739 508566,365 32,358
 1700 6468926,938 508562,136 32,948
 1701 6468928,478 508563,451 32,109
 1702 6468929,651 508568,569 32,031
 1703 6468932,596 508570,220 32,022
 1704 6468938,217 508567,122 31,705
 1705 6468938,220 508568,303 31,963
 1706 6468937,420 508571,349 31,681
 1707 6468933,684 508569,987 32,034
 1708 6468935,123 508570,895 31,991
 1709 6468935,616 508571,541 31,625
 1710 6468936,427 508572,571 31,532
 1711 6468936,397 508572,568 31,478
 1712 6468933,241 508573,890 31,929
 1713 6468933,792 508574,327 31,548
 1714 6468934,588 508575,204 31,645
 1715 6468930,381 508576,485 32,047
 1716 6468931,300 508576,544 31,802
 1717 6468931,546 508577,338 31,770
 1718 6468929,507 508580,655 31,901
 1719 6468933,382 508582,425 34,387
 1720 6468932,827 508581,719 34,420
 1721 6468935,315 508579,039 34,265
 1722 6468935,913 508579,920 34,369
 1723 6468938,379 508577,103 34,073
 1724 6468937,679 508576,772 33,999

1725	6468940,417	508574,257	34,241	1779	6468935,691	508544,203	32,705
1726	6468939,657	508573,671	34,187	1780	6468940,228	508540,495	32,004
1727	6468941,738	508571,917	34,197	1781	6468937,924	508539,111	32,627
1728	6468940,948	508571,621	34,159	1782	6468943,119	508533,790	32,043
1729	6468942,913	508569,978	34,450	1783	6468943,070	508533,761	31,987
1730	6468941,974	508569,318	34,292	1784	6468941,494	508532,044	32,999
1731	6468945,064	508567,971	34,023	1785	6468944,544	508529,576	31,956
1732	6468944,443	508567,389	33,939	1786	6468943,047	508528,986	32,811
1733	6468945,525	508566,578	33,766	1787	6468946,884	508527,258	31,948
1734	6468945,810	508567,146	33,738	1788	6468945,117	508526,196	33,026
1735	6468937,359	508583,639	32,801	1789	6468949,235	508528,696	31,687
1736	6468938,844	508580,170	32,612	1790	6468950,292	508532,527	31,644
1737	6468941,018	508577,382	32,677	1791	6468947,803	508536,827	32,004
1738	6468943,648	508573,535	32,601	1792	6468947,804	508536,856	31,909
1739	6468945,993	508570,300	32,482	1793	6468945,908	508541,428	32,142
1740	6468947,498	508567,578	32,402	1794	6468943,079	508546,952	32,167
1741	6468947,341	508565,664	32,315	1795	6468940,646	508551,448	32,174
1742	6468946,282	508563,837	32,165	1796	6468937,187	508554,923	32,248
1743	6468944,460	508563,506	31,756	1797	6468939,293	508557,482	32,370
1744	6468941,483	508565,038	31,786	1798	6468940,055	508558,009	31,652
1745	6468941,382	508565,013	31,926	1799	6468940,662	508555,817	32,291
1746	6468939,343	508566,645	31,701	1800	6468941,215	508557,102	31,837
1747	6468937,878	508568,179	31,833	1801	6468942,363	508554,675	32,231
1748	6468936,692	508567,253	31,775	1802	6468943,216	508555,780	31,869
1749	6468936,035	508567,438	31,922	1803	6468943,103	508560,505	31,542
1750	6468934,240	508565,639	31,828	1804	6468945,369	508557,897	31,564
1751	6468933,342	508565,676	32,190	1805	6468947,338	508555,671	31,514
1752	6468936,715	508561,967	31,758	1806	6468947,341	508555,652	31,481
1753	6468935,832	508561,102	32,384	1807	6468944,230	508554,293	32,157
1754	6468939,015	508563,807	31,440	1808	6468945,274	508555,165	31,575
1755	6468934,424	508558,515	32,265	1809	6468945,980	508550,993	32,376
1756	6468931,501	508555,261	32,475	1810	6468947,271	508551,205	31,770
1757	6468929,877	508553,639	32,696	1811	6468948,117	508554,279	31,468
1758	6468930,742	508556,129	32,374	1812	6468949,636	508551,507	31,673
1759	6468929,638	508556,643	32,860	1813	6468950,915	508548,087	31,738
1760	6468928,045	508554,554	32,236	1814	6468947,614	508548,749	31,782
1761	6468928,249	508555,877	32,788	1815	6468946,945	508547,957	32,403
1762	6468933,647	508551,325	32,290	1816	6468949,341	508544,936	31,901
1763	6468933,038	508550,071	32,766	1817	6468948,607	508544,514	32,368
1764	6468930,653	508549,175	32,100	1818	6468951,403	508542,124	32,037
1765	6468931,988	508549,250	32,785	1819	6468951,529	508541,105	32,508
1766	6468925,703	508548,806	32,041	1820	6468952,225	508543,860	31,961
1767	6468922,242	508547,246	31,912	1821	6468954,026	508542,577	32,920
1768	6468920,673	508545,298	32,219	1822	6468953,840	508546,201	31,821
1769	6468918,993	508544,473	33,594	1823	6468955,392	508545,154	32,766
1770	6468924,465	508541,734	31,737	1824	6468954,044	508549,031	31,816
1771	6468922,744	508541,150	32,307	1825	6468955,799	508549,744	32,830
1772	6468927,734	508544,194	32,109	1826	6468952,078	508552,433	31,719
1773	6468930,699	508545,394	31,915	1827	6468953,465	508553,218	32,657
1774	6468932,245	508546,572	33,282	1828	6468949,755	508555,953	31,736
1775	6468934,964	508549,264	32,150	1829	6468951,854	508557,184	32,745
1776	6468933,298	508548,954	32,884	1830	6468947,750	508559,426	31,692
1777	6468937,209	508545,640	32,102	1831	6468949,625	508560,074	32,783
1778	6468936,220	508544,446	33,542	1832	6468947,314	508562,823	31,922

1833	6468948,997	508563,069	32,795	1887	6468920,818	508530,981	31,790
1834	6468948,053	508565,114	32,266	1888	6468921,546	508533,022	33,077
1835	6468949,295	508565,019	32,940	1889	6468916,573	508538,055	31,790
1836	6468948,048	508567,089	32,404	1890	6468918,794	508538,485	33,754
1837	6468948,939	508567,236	32,709	1891	6468922,184	508524,549	31,712
1838	6468947,460	508569,318	32,599	1892	6468928,914	508526,983	31,513
1839	6468950,360	508570,198	32,797	1893	6468933,739	508523,158	31,428
1840	6468953,207	508563,093	33,024	1894	6468939,487	508516,779	31,800
1841	6468955,892	508557,315	33,048	1895	6468945,831	508516,816	31,823
1842	6468958,674	508550,844	32,982	1896	6468945,349	508512,960	31,878
1843	6468963,147	508543,345	32,905	1897	6468944,258	508511,027	32,407
1844	6468959,743	508540,800	32,669	1898	6468942,033	508513,321	31,828
1845	6468962,203	508550,059	32,885	1899	6468941,638	508511,935	31,954
1846	6468967,145	508542,401	32,949	1900	6468942,267	508509,682	31,821
1847	6468962,740	508537,237	32,832	1901	6468943,512	508511,187	32,773
1848	6468961,402	508534,653	32,422	1902	6468950,793	508515,294	31,678
1849	6468961,523	508534,914	32,536	1903	6468956,756	508516,646	32,312
1850	6468960,873	508533,801	32,007	1904	6468954,367	508514,608	31,717
1851	6468957,962	508532,761	32,155	1905	6468951,620	508511,988	31,537
1852	6468958,198	508533,964	32,772	1906	6468949,264	508509,034	31,679
1853	6468958,297	508537,657	32,744	1907	6468947,939	508507,512	32,715
1854	6468955,972	508534,988	32,747	1908	6468955,353	508503,630	31,891
1855	6468955,159	508534,375	32,117	1909	6468953,732	508501,984	32,671
1856	6468952,759	508537,909	32,687	1910	6468956,471	508507,342	31,513
1857	6468951,981	508537,542	32,018	1911	6468960,673	508509,069	31,891
1858	6468951,448	508539,189	32,443	1912	6468963,704	508511,131	32,335
1859	6468955,045	508540,480	32,676	1913	6468965,531	508507,781	32,221
1860	6468950,945	508530,928	31,690	1914	6468968,917	508507,756	32,604
1861	6468953,862	508532,702	31,720	1915	6468967,845	508505,141	31,755
1862	6468956,795	508531,627	31,937	1916	6468965,227	508501,964	31,684
1863	6468956,754	508529,962	32,243	1917	6468961,509	508498,691	31,578
1864	6468953,464	508526,885	32,135	1918	6468959,471	508496,831	32,962
1865	6468952,434	508527,783	31,883	1919	6468975,413	508502,383	32,393
1866	6468952,843	508523,717	32,086	1920	6468972,685	508499,315	31,859
1867	6468951,836	508523,829	31,855	1921	6468969,794	508496,089	31,584
1868	6468951,608	508521,015	32,039	1922	6468966,500	508493,430	31,465
1869	6468950,044	508523,671	31,921	1923	6468964,064	508492,636	32,474
1870	6468955,474	508520,862	32,527	1924	6468964,036	508492,584	32,426
1871	6468953,561	508516,951	31,689	1925	6468968,415	508488,948	32,184
1872	6468949,095	508514,413	31,764	1926	6468970,412	508490,193	31,575
1873	6468949,827	508519,590	31,807	1927	6468972,875	508491,925	31,540
1874	6468948,533	508522,173	33,309	1928	6468975,679	508494,580	31,720
1875	6468947,378	508521,648	33,303	1929	6468977,342	508496,741	32,363
1876	6468946,044	508519,921	31,885	1930	6468982,916	508491,770	32,270
1877	6468940,270	508522,905	31,761	1931	6468981,061	508490,671	31,738
1878	6468942,394	508524,988	33,181	1932	6468978,165	508487,008	31,673
1879	6468935,548	508529,143	31,798	1933	6468976,805	508483,828	31,546
1880	6468937,558	508530,613	33,473	1934	6468974,420	508482,004	31,713
1881	6468934,000	508533,735	31,599	1935	6468973,472	508480,810	32,511
1882	6468936,531	508534,536	32,971	1936	6468978,788	508479,413	31,596
1883	6468930,359	508531,968	31,802	1937	6468977,557	508477,915	32,316
1884	6468924,819	508533,034	31,661	1938	6468981,765	508481,399	31,645
1885	6468922,595	508533,118	32,705	1939	6468985,577	508485,223	31,731
1886	6468923,512	508529,680	31,828	1940	6468985,587	508485,255	31,686

1941 6468987,144 508487,935 32,668
 1942 6468989,352 508484,852 31,901
 1943 6468988,541 508486,421 32,213
 1944 6468987,689 508481,085 31,689
 1945 6468987,715 508481,098 31,636
 1946 6468985,205 508476,612 31,779
 1947 6468982,317 508472,924 31,616
 1948 6468980,831 508473,606 32,689
 1949 6468980,909 508471,590 31,690
 1950 6468980,745 508473,424 32,741
 1951 6468978,216 508473,052 31,971
 1952 6468979,837 508474,122 32,400
 1953 6468984,507 508467,488 31,850
 1954 6468988,696 508473,725 31,738
 1955 6468991,867 508478,175 31,726
 1956 6468991,862 508478,277 31,824
 1957 6468994,855 508481,622 31,919
 1958 6468997,527 508485,627 31,996
 1959 6468995,753 508484,874 31,864
 1960 6468994,191 508486,035 32,204
 1961 6468996,244 508487,289 31,854
 1962 6468995,242 508487,442 32,406
 1963 6468992,421 508490,217 32,357
 1964 6468993,539 508490,902 31,761
 1965 6468990,449 508492,381 32,604
 1966 6468991,677 508492,863 31,964
 1967 6468989,000 508495,187 32,593
 1968 6468990,643 508495,604 31,957
 1969 6468987,761 508498,505 33,039
 1970 6468989,163 508499,303 32,259
 1971 6468989,081 508499,162 32,908
 1972 6468986,439 508500,763 33,010
 1973 6468987,468 508501,494 32,427
 1974 6468985,107 508504,304 32,525
 1975 6468984,158 508503,358 33,056
 1976 6468982,238 508500,672 32,912
 1977 6468979,461 508504,255 32,984
 1978 6468982,659 508505,911 32,940
 1979 6468983,210 508506,835 32,405
 1980 6468978,940 508507,879 32,977
 1981 6468978,945 508507,874 32,920
 1982 6468979,100 508509,220 32,134
 1983 6468976,422 508506,156 33,317
 1984 6468974,190 508507,993 33,571
 1985 6468975,560 508510,425 32,926
 1986 6468976,337 508511,495 32,165
 1987 6468972,809 508511,443 32,679
 1988 6468973,367 508513,093 32,347
 1989 6468970,928 508511,372 32,288
 1990 6468971,770 508509,873 32,997
 1991 6468969,949 508508,366 32,796
 1992 6468968,688 508508,218 32,529
 1993 6468964,380 508512,448 32,418
 1994 6468966,672 508514,829 32,610

1995 6468966,794 508515,176 33,513
 1996 6468961,286 508516,648 32,569
 1997 6468962,901 508518,715 32,686
 1998 6468964,399 508519,433 32,422
 1999 6468965,230 508520,021 32,213
 2000 6468968,524 508517,598 32,512
 2001 6468969,326 508518,683 32,171
 2002 6468970,909 508515,311 32,405
 2003 6468971,728 508516,157 32,234
 2004 6468974,919 508515,732 32,038
 2005 6468971,461 508519,848 32,168
 2006 6468967,422 508522,869 32,223
 2007 6468963,734 508526,161 32,295
 2008 6468963,717 508522,516 32,183
 2009 6468962,000 508521,490 32,632
 2010 6468961,605 508526,437 32,039
 2011 6468960,441 508525,173 32,381
 2012 6468960,974 508528,752 32,254
 2013 6468959,924 508527,569 32,413
 2014 6468958,474 508521,515 32,603
 2015 6468955,445 508526,506 32,161
 2016 6468960,988 508533,026 31,917
 2017 6468963,320 508533,474 32,767
 2018 6468965,299 508529,837 32,857
 2019 6468963,496 508528,738 32,086
 2020 6468966,586 508526,166 32,184
 2021 6468967,861 508528,041 32,750
 2022 6468970,063 508524,196 32,340
 2023 6468972,503 508527,204 33,086
 2024 6468972,539 508527,249 33,039
 2025 6468976,242 508523,606 32,518
 2026 6468973,832 508520,394 32,256
 2027 6468977,402 508517,821 32,175
 2028 6468980,671 508520,460 32,462
 2029 6468983,286 508516,265 32,465
 2030 6468980,187 508514,160 32,197
 2031 6468982,968 508511,870 32,072
 2032 6468985,794 508513,680 32,545
 2033 6468985,663 508509,621 32,309
 2034 6468987,665 508510,295 32,905
 2035 6468989,123 508505,506 32,412
 2036 6468990,642 508506,357 32,895
 2037 6468987,291 508504,287 32,251
 2038 6468991,232 508499,394 32,285
 2039 6468992,489 508500,318 32,305
 2040 6468993,696 508501,677 32,700
 2041 6468996,859 508497,170 32,627
 2042 6468996,001 508495,728 32,217
 2043 6468993,442 508493,958 31,924
 2044 6468996,692 508490,996 31,847
 2045 6468998,357 508493,847 32,151
 2046 6469002,790 508497,116 32,424
 2047 6469004,833 508490,547 32,262
 2048 6469000,166 508486,907 32,040

2049	6469002,690	508484,056	32,267	2103	6469008,894	508470,562	32,156
2050	6469005,083	508483,917	32,250	2104	6469007,704	508469,294	31,995
2051	6469006,180	508483,395	31,679	2105	6469006,619	508473,216	32,546
2052	6469005,058	508482,343	32,206	2106	6469006,557	508471,135	32,356
2053	6469006,310	508485,626	32,179	2107	6469005,906	508470,260	32,031
2054	6469007,259	508484,862	31,538	2108	6469003,610	508473,255	32,697
2055	6469004,467	508488,713	32,146	2109	6469003,025	508472,024	32,175
2056	6469008,395	508487,509	32,119	2110	6469002,973	508475,221	32,744
2057	6469008,403	508486,463	31,770	2111	6469001,481	508475,336	32,420
2058	6469010,150	508485,271	32,281	2112	6469003,917	508477,235	32,428
2059	6469008,903	508484,486	31,516	2113	6469001,957	508478,411	32,252
2060	6469008,014	508483,745	31,526	2114	6468996,587	508475,395	32,092
2061	6469006,676	508481,708	31,627	2115	6468992,688	508472,220	31,991
2062	6469005,567	508480,699	32,452	2116	6468988,882	508468,945	31,812
2063	6469007,268	508477,439	32,576	2117	6468986,404	508464,996	31,673
2064	6469008,738	508478,750	31,415	2118	6468992,821	508459,644	31,769
2065	6469010,249	508480,234	31,312	2119	6468996,835	508462,876	32,158
2066	6469009,787	508482,850	31,585	2120	6469000,606	508464,754	32,075
2067	6469011,366	508483,522	32,017	2121	6469004,292	508465,926	31,751
2068	6469013,418	508481,469	31,749	2122	6469008,704	508459,419	32,133
2069	6469012,419	508479,878	31,297	2123	6469005,112	508456,088	32,033
2070	6469011,617	508478,590	31,264	2124	6469005,072	508456,108	31,985
2071	6469010,907	508477,527	31,336	2125	6469003,469	508452,488	32,172
2072	6469008,878	508475,696	32,101	2126	6469003,231	508450,051	31,728
2073	6469011,399	508472,751	32,622	2127	6469003,193	508450,001	31,694
2074	6469013,013	508474,622	31,265	2128	6469011,038	508447,142	32,039
2075	6469013,849	508477,332	31,256	2129	6469016,232	508450,303	31,779
2076	6469015,740	508478,234	31,489	2130	6469018,288	508452,604	31,642
2077	6469017,244	508480,533	32,098	2131	6469023,398	508447,383	32,421
2078	6469018,033	508474,695	31,173	2132	6469028,293	508457,301	31,317
2079	6469016,981	508473,757	30,861	2133	6469023,560	508459,229	31,270
2080	6469020,740	508471,673	31,232	2134	6469019,833	508457,241	31,452
2081	6469019,880	508470,338	31,111	2135	6469018,608	508455,561	31,763
2082	6469014,453	508471,492	31,286	2136	6469024,182	508454,905	31,545
2083	6469013,925	508470,115	31,885	2137	6469024,014	508453,752	31,856
2084	6469016,311	508466,906	31,132	2138	6469027,608	508452,420	31,634
2085	6469014,007	508467,419	31,840	2139	6469026,458	508451,100	31,734
2086	6469015,897	508461,814	31,268	2140	6469031,045	508449,005	31,763
2087	6469013,903	508460,914	31,680	2141	6469029,313	508447,772	32,387
2088	6469020,235	508466,934	31,312	2142	6469033,447	508445,756	31,871
2089	6469022,681	508470,364	31,377	2143	6469031,943	508444,200	32,496
2090	6469026,646	508466,794	31,518	2144	6469036,518	508442,737	31,886
2091	6469029,015	508464,087	31,504	2145	6469035,808	508441,217	32,542
2092	6469031,148	508461,140	31,508	2146	6469041,157	508440,056	31,902
2093	6469033,300	508460,743	31,682	2147	6469039,964	508437,723	32,290
2094	6469034,635	508461,779	31,898	2148	6469045,145	508436,588	31,960
2095	6469036,961	508460,681	31,904	2149	6469044,897	508435,042	32,361
2096	6469039,808	508461,832	32,049	2150	6469049,473	508434,575	32,063
2097	6469026,674	508461,083	31,321	2151	6469048,908	508433,697	32,338
2098	6469023,978	508463,225	31,374	2152	6469050,243	508438,295	32,052
2099	6469010,196	508462,242	31,951	2153	6469052,310	508438,192	32,143
2100	6469009,171	508465,504	31,719	2154	6469052,717	508441,133	32,264
2101	6469010,092	508467,308	31,917	2155	6469053,500	508440,242	32,444
2102	6469009,083	508466,700	31,738	2156	6469055,760	508441,418	32,315

2157 6469057,545 508440,899 32,532
 2158 6469056,851 508444,879 32,202
 2159 6469058,929 508445,366 32,595
 2160 6469056,982 508449,075 32,289
 2161 6469058,699 508450,168 32,831
 2162 6469054,721 508451,248 32,289
 2163 6469055,070 508452,382 33,036
 2164 6469050,411 508452,332 32,368
 2165 6469050,988 508453,423 33,139
 2166 6469046,448 508454,817 32,301
 2167 6469047,372 508455,952 33,039
 2168 6469042,628 508458,493 32,078
 2169 6469043,893 508459,663 33,011
 2170 6469040,512 508461,441 31,960
 2171 6469041,235 508462,688 33,047
 2172 6469037,891 508462,698 33,014
 2173 6469038,266 508460,251 31,871
 2174 6469036,226 508455,981 31,720
 2175 6469033,307 508452,300 31,773
 2176 6469037,041 508449,072 31,973
 2177 6469042,102 508444,617 31,905
 2178 6469046,291 508442,073 31,845
 2179 6469046,578 508446,213 31,921
 2180 6469050,969 508446,204 31,969
 2181 6469053,107 508444,427 32,211
 2182 6469053,259 508448,188 32,103
 2183 6469048,971 508449,162 32,216
 2184 6469044,074 508453,137 32,268
 2185 6469039,965 508455,916 31,960
 2186 6469038,109 508463,145 33,065
 2187 6469037,692 508463,962 32,911
 2188 6469037,083 508463,313 33,476
 2189 6469035,242 508464,382 33,345
 2190 6469036,163 508464,905 33,026
 2191 6469033,637 508465,692 33,951
 2192 6469034,572 508466,850 33,163
 2193 6469031,958 508467,694 34,336
 2194 6469031,139 508469,685 35,282
 2195 6469030,713 508471,048 35,774
 2196 6469030,377 508470,772 35,575
 2197 6469027,634 508473,113 35,211
 2198 6469028,223 508473,693 35,286
 2199 6469025,479 508475,359 35,608
 2200 6469025,931 508475,807 35,596
 2201 6469024,736 508477,357 35,523
 2202 6469024,011 508476,687 35,500
 2203 6469021,857 508478,774 35,380
 2204 6469022,590 508479,237 35,408
 2205 6469018,297 508481,903 32,247
 2206 6469020,952 508483,311 32,761
 2207 6469024,478 508483,108 32,678
 2208 6469026,986 508480,577 32,728
 2209 6469029,759 508477,954 32,722
 2210 6469031,750 508475,507 32,906

2211 6469034,174 508473,502 32,968
 2212 6469034,743 508470,019 32,910
 2213 6469034,620 508467,820 33,077
 2214 6469062,457 508448,643 32,741
 2215 6469061,990 508441,760 32,684
 2216 6469061,461 508435,586 32,591
 2217 6469060,601 508433,503 31,852
 2218 6469062,544 508433,366 32,269
 2219 6469061,552 508432,927 32,004
 2220 6469059,259 508432,969 31,784
 2221 6469058,334 508434,091 32,346
 2222 6469057,003 508432,863 32,060
 2223 6469056,866 508431,613 31,544
 2224 6469054,026 508431,237 31,596
 2225 6469054,063 508432,650 32,014
 2226 6469054,810 508435,994 32,455
 2227 6469051,988 508433,036 31,982
 2228 6469052,300 508430,666 31,543
 2229 6469050,899 508429,609 31,629
 2230 6469048,803 508430,196 32,258
 2231 6469049,862 508428,137 32,121
 2232 6469050,932 508427,625 31,650
 2233 6469049,204 508425,826 31,534
 2234 6469048,082 508426,973 31,737
 2235 6469045,859 508428,064 32,972
 2236 6469044,393 508426,327 32,134
 2237 6469045,384 508423,123 32,346
 2238 6469048,442 508424,501 31,493
 2239 6469047,748 508424,485 31,776
 2240 6469050,882 508423,714 31,670
 2241 6469050,612 508422,635 31,820
 2242 6469052,310 508419,915 31,594
 2243 6469051,686 508419,015 31,597
 2244 6469054,305 508417,702 31,735
 2245 6469054,214 508419,354 31,450
 2246 6469056,308 508417,326 31,543
 2247 6469058,186 508417,284 30,821
 2248 6469053,225 508424,734 31,428
 2249 6469056,455 508422,352 31,507
 2250 6469057,248 508421,688 31,596
 2251 6469059,194 508421,564 31,538
 2252 6469061,420 508420,080 32,066
 2253 6469058,631 508419,302 30,887
 2254 6469056,780 508420,086 31,878
 2255 6469059,209 508424,017 31,454
 2256 6469061,236 508423,854 31,900
 2257 6469054,757 508426,594 31,441
 2258 6469059,212 508428,488 31,586
 2259 6469062,031 508428,500 31,887
 2260 6469063,219 508428,611 32,249
 2261 6469062,337 508430,964 31,982
 2262 6469063,396 508430,781 32,281
 2263 6469060,776 508415,362 31,881
 2264 6469062,807 508414,681 32,331

2265	6469067,273	508413,787	32,241	2319	6469099,530	508420,829	31,512
2266	6469068,800	508421,543	32,368	2320	6469101,924	508423,320	31,038
2267	6469064,125	508422,741	32,350	2321	6469102,814	508421,676	31,072
2268	6469066,276	508432,664	32,514	2322	6469103,049	508420,778	31,293
2269	6469070,781	508432,591	32,542	2323	6469103,747	508424,803	30,892
2270	6469072,618	508441,863	32,543	2324	6469104,785	508423,266	31,010
2271	6469068,578	508443,199	32,553	2325	6469104,960	508422,506	31,253
2272	6469069,809	508451,748	32,458	2326	6469104,257	508426,371	30,945
2273	6469073,891	508451,467	32,551	2327	6469104,822	508427,958	31,074
2274	6469075,504	508460,491	32,322	2328	6469107,448	508422,664	30,857
2275	6469070,970	508461,734	32,423	2329	6469107,684	508421,778	31,175
2276	6469072,736	508471,536	32,183	2330	6469109,029	508423,000	30,942
2277	6469077,149	508471,297	32,142	2331	6469108,688	508422,109	31,169
2278	6469078,489	508480,795	32,055	2332	6469110,586	508422,004	31,015
2279	6469074,267	508482,055	32,056	2333	6469104,177	508430,070	31,716
2280	6469075,700	508490,416	31,970	2334	6469101,200	508432,017	31,656
2281	6469076,473	508497,463	31,955	2335	6469098,451	508435,025	31,761
2282	6469080,858	508496,114	32,046	2336	6469094,559	508436,808	31,858
2283	6469079,914	508492,549	32,094	2337	6469091,688	508436,602	32,239
2284	6469081,667	508490,464	31,898	2338	6469089,212	508435,744	32,216
2285	6469085,734	508489,634	31,822	2339	6469088,793	508433,687	32,387
2286	6469085,050	508486,088	31,782	2340	6469090,368	508433,048	33,361
2287	6469081,227	508485,962	31,851	2341	6469090,955	508434,647	33,451
2288	6469079,023	508484,040	32,045	2342	6469092,880	508434,780	33,375
2289	6469075,032	508443,657	32,506	2343	6469093,812	508433,964	33,352
2290	6469081,136	508441,895	32,340	2344	6469092,412	508432,989	33,101
2291	6469084,962	508438,973	32,299	2345	6469091,129	508431,563	33,114
2292	6469089,127	508435,631	32,217	2346	6469092,314	508430,065	32,892
2293	6469088,789	508432,786	32,333	2347	6469093,611	508431,853	32,907
2294	6469088,933	508431,848	32,049	2348	6469096,477	508433,484	32,833
2295	6469086,611	508432,108	32,341	2349	6469097,979	508431,131	32,944
2296	6469084,988	508430,254	32,485	2350	6469095,542	508430,539	32,919
2297	6469085,395	508429,582	31,901	2351	6469094,178	508429,186	32,930
2298	6469083,690	508429,091	32,379	2352	6469096,553	508427,585	34,422
2299	6469083,777	508428,516	32,045	2353	6469096,838	508428,594	34,437
2300	6469081,649	508428,610	32,326	2354	6469098,401	508428,406	34,616
2301	6469086,327	508429,714	31,520	2355	6469098,462	508427,325	34,651
2302	6469086,111	508428,532	31,729	2356	6469099,648	508427,626	34,902
2303	6469086,906	508430,541	31,594	2357	6469100,218	508427,751	34,177
2304	6469088,421	508430,846	31,522	2358	6469100,093	508428,691	34,001
2305	6469088,452	508429,184	31,390	2359	6469106,472	508428,474	31,768
2306	6469087,980	508428,445	31,743	2360	6469105,839	508427,421	30,964
2307	6469089,382	508430,441	31,579	2361	6469109,769	508425,455	31,761
2308	6469091,580	508427,696	31,509	2362	6469108,930	508424,685	30,989
2309	6469090,894	508426,877	31,423	2363	6469112,591	508421,682	31,828
2310	6469090,465	508426,479	31,814	2364	6469112,173	508420,454	31,150
2311	6469093,791	508425,006	31,651	2365	6469115,746	508418,901	31,994
2312	6469093,025	508424,262	31,563	2366	6469114,894	508418,113	31,352
2313	6469092,551	508423,747	31,849	2367	6469117,536	508416,261	31,919
2314	6469096,555	508423,221	31,590	2368	6469116,815	508415,812	31,403
2315	6469096,616	508422,040	31,332	2369	6469119,116	508412,957	31,497
2316	6469096,266	508421,213	31,610	2370	6469123,292	508414,451	32,028
2317	6469099,495	508422,927	31,301	2371	6469124,581	508411,060	31,630
2318	6469099,663	508421,665	31,181	2372	6469124,726	508408,870	31,652

2373	6469124,006	508407,378	31,504	2427	6469129,598	508413,423	34,309
2374	6469125,042	508405,716	31,672	2428	6469129,901	508415,262	34,620
2375	6469125,856	508406,311	32,127	2429	6469131,584	508415,096	34,504
2376	6469127,070	508405,876	32,166	2430	6469131,881	508413,239	34,411
2377	6469127,964	508407,658	31,936	2431	6469130,696	508412,922	34,503
2378	6469126,986	508408,082	32,050	2432	6469130,970	508410,500	34,276
2379	6469126,368	508408,498	32,729	2433	6469131,990	508410,571	34,282
2380	6469127,358	508410,837	33,163	2434	6469131,819	508408,201	33,966
2381	6469127,889	508409,582	32,252	2435	6469130,711	508408,567	34,017
2382	6469128,573	508409,444	32,297	2436	6469129,970	508406,573	33,074
2383	6469130,261	508407,257	33,615	2437	6469129,808	508407,043	33,200
2384	6469128,675	508405,778	32,756	2438	6469123,356	508414,471	32,050
2385	6469125,915	508404,780	31,546	2439	6469122,861	508418,675	32,101
2386	6469128,281	508403,910	31,587	2440	6469121,426	508421,276	31,927
2387	6469131,482	508404,267	31,583	2441	6469119,773	508424,101	31,798
2388	6469134,120	508405,009	31,472	2442	6469118,476	508426,499	31,806
2389	6469136,364	508407,864	31,248	2443	6469116,811	508428,515	31,780
2390	6469137,405	508411,228	31,230	2444	6469114,746	508430,562	31,800
2391	6469136,931	508415,553	30,919	2445	6469114,704	508430,587	31,756
2392	6469136,698	508420,994	30,734	2446	6469113,492	508432,747	31,790
2393	6469137,491	508425,861	30,848	2447	6469110,709	508436,104	31,477
2394	6469136,878	508430,009	30,770	2448	6469111,476	508436,935	30,883
2395	6469133,820	508432,969	30,929	2449	6469108,100	508439,326	30,930
2396	6469130,271	508434,663	30,997	2450	6469107,076	508438,840	31,391
2397	6469126,820	508436,228	30,970	2451	6469104,560	508441,800	31,034
2398	6469123,006	508437,188	31,105	2452	6469103,893	508441,246	31,368
2399	6469119,234	508438,104	31,014	2453	6469101,940	508444,511	31,290
2400	6469116,299	508437,780	30,947	2454	6469100,866	508444,136	31,919
2401	6469113,561	508435,318	30,989	2455	6469097,381	508447,419	31,275
2402	6469113,125	508434,507	31,693	2456	6469097,144	508446,625	32,062
2403	6469114,938	508433,969	31,809	2457	6469093,744	508449,366	31,257
2404	6469117,007	508434,613	32,358	2458	6469093,396	508448,479	32,117
2405	6469116,675	508431,913	32,910	2459	6469089,942	508450,808	31,454
2406	6469119,412	508430,102	33,479	2460	6469089,810	508450,113	31,977
2407	6469120,911	508431,486	33,720	2461	6469086,713	508451,918	31,522
2408	6469121,828	508433,900	33,287	2462	6469086,263	508451,115	31,823
2409	6469124,583	508431,714	34,082	2463	6469083,985	508451,945	31,652
2410	6469123,137	508429,476	34,282	2464	6469083,335	508450,969	32,081
2411	6469122,109	508427,736	34,075	2465	6469084,577	508454,176	31,549
2412	6469124,321	508424,717	34,705	2466	6469083,219	508454,326	32,166
2413	6469126,504	508425,534	34,769	2467	6469085,513	508456,696	31,440
2414	6469127,745	508426,339	34,870	2468	6469083,645	508456,614	31,938
2415	6469128,855	508428,952	35,011	2469	6469079,888	508449,752	32,248
2416	6469131,046	508426,150	35,046	2470	6469086,117	508447,223	32,088
2417	6469130,881	508424,084	35,015	2471	6469091,945	508443,754	32,058
2418	6469128,563	508423,639	34,944	2472	6469098,867	508440,595	31,806
2419	6469125,499	508423,112	34,880	2473	6469104,414	508435,932	31,812
2420	6469126,664	508419,783	34,717	2474	6469109,375	508431,026	31,730
2421	6469128,701	508420,210	35,054	2475	6469114,371	508426,018	31,837
2422	6469130,597	508420,324	34,828	2476	6469118,051	508420,862	31,862
2423	6469131,258	508416,505	34,545	2477	6469120,231	508416,478	31,980
2424	6469128,940	508416,034	34,865	2478	6469115,472	508421,937	31,809
2425	6469126,841	508415,984	34,633	2479	6469110,401	508426,957	31,769
2426	6469127,922	508414,003	34,326	2480	6469106,069	508431,263	31,823

2481	6469100,593	508436,031	31,815	2535	6469122,872	508453,091	30,781
2482	6469094,914	508439,766	31,903	2536	6469123,588	508455,962	33,067
2483	6469088,519	508441,293	32,148	2537	6469122,869	508452,651	30,812
2484	6469084,771	508436,838	32,280	2538	6469125,103	508450,872	30,883
2485	6469080,773	508441,683	32,361	2539	6469124,695	508447,672	30,821
2486	6469079,373	508435,321	32,418	2540	6469122,223	508445,929	30,723
2487	6469077,990	508429,288	32,360	2541	6469119,759	508446,806	30,757
2488	6469073,682	508431,061	32,456	2542	6469119,039	508450,314	30,788
2489	6469075,442	508437,736	32,413	2543	6469120,656	508452,371	30,808
2490	6469076,592	508444,548	32,452	2544	6469120,654	508452,373	30,809
2491	6469077,810	508451,239	32,340	2545	6469122,666	508449,738	32,471
2492	6469078,278	508457,347	32,303	2546	6469122,027	508449,965	32,450
2493	6469079,468	508462,940	32,109	2547	6469121,470	508448,786	32,189
2494	6469080,464	508468,735	31,744	2548	6469121,914	508448,612	32,210
2495	6469082,842	508477,148	31,450	2549	6469117,162	508449,558	30,621
2496	6469088,101	508474,030	31,490	2550	6469112,657	508451,543	31,017
2497	6469084,756	508469,714	31,692	2551	6469112,038	508453,449	30,929
2498	6469089,209	508468,657	31,255	2552	6469107,837	508455,293	30,948
2499	6469085,878	508457,480	31,264	2553	6469103,664	508457,902	30,928
2500	6469088,302	508459,940	31,013	2554	6469099,270	508460,424	31,055
2501	6469089,286	508462,846	31,274	2555	6469096,160	508462,770	31,141
2502	6469089,195	508463,990	31,206	2556	6469093,506	508456,432	31,076
2503	6469088,601	508463,939	31,438	2557	6469099,033	508452,817	31,070
2504	6469091,399	508466,632	31,234	2558	6469104,944	508449,018	31,014
2505	6469087,508	508464,475	31,465	2559	6469108,918	508445,264	30,978
2506	6469084,542	508463,529	32,062	2560	6469112,374	508442,112	30,776
2507	6469082,448	508460,434	32,012	2561	6469117,223	508442,475	30,724
2508	6469081,742	508458,361	32,174	2562	6469120,824	508441,926	30,861
2509	6469082,200	508457,567	32,191	2563	6469123,885	508441,153	30,791
2510	6469083,727	508458,262	33,023	2564	6469126,793	508445,616	30,765
2511	6469083,410	508458,523	32,971	2565	6469129,306	508450,254	30,742
2512	6469084,228	508460,483	33,234	2566	6469130,082	508452,329	32,321
2513	6469084,854	508459,962	33,312	2567	6469135,564	508447,229	30,598
2514	6469085,627	508461,599	32,981	2568	6469136,533	508449,408	32,689
2515	6469085,435	508461,952	33,077	2569	6469133,705	508444,458	30,738
2516	6469085,428	508461,943	33,017	2570	6469131,732	508439,485	30,772
2517	6469087,590	508463,456	31,960	2571	6469137,749	508436,062	30,875
2518	6469100,344	508473,150	31,575	2572	6469139,831	508440,527	30,754
2519	6469100,199	508471,107	32,687	2573	6469141,957	508444,802	30,659
2520	6469096,992	508471,507	31,478	2574	6469143,589	508446,393	32,529
2521	6469099,001	508471,641	32,914	2575	6469147,942	508442,114	30,800
2522	6469098,115	508470,079	32,516	2576	6469148,931	508444,200	32,655
2523	6469096,044	508469,559	31,089	2577	6469145,524	508436,422	30,694
2524	6469098,046	508473,382	31,170	2578	6469142,966	508429,978	30,726
2525	6469097,640	508467,957	31,050	2579	6469141,919	508422,959	30,665
2526	6469098,508	508469,018	32,290	2580	6469141,901	508415,555	30,949
2527	6469100,846	508464,817	30,901	2581	6469141,969	508408,157	31,128
2528	6469101,715	508466,155	32,488	2582	6469137,716	508403,659	31,191
2529	6469105,569	508462,144	31,023	2583	6469130,675	508401,542	31,487
2530	6469106,449	508464,517	32,430	2584	6469123,689	508402,590	31,835
2531	6469110,272	508459,196	30,859	2585	6469122,074	508406,964	31,604
2532	6469112,220	508460,974	32,180	2586	6469119,826	508406,604	31,538
2533	6469116,194	508456,953	30,623	2587	6469118,898	508406,002	31,678
2534	6469118,186	508457,817	32,448	2588	6469120,650	508401,976	31,655

2589 6469120,276 508401,010 31,749
 2590 6469125,167 508399,032 31,532
 2591 6469125,096 508398,332 31,731
 2592 6469130,156 508399,505 31,517
 2593 6469130,350 508398,945 31,727
 2594 6469135,033 508401,284 31,397
 2595 6469135,023 508400,351 31,585
 2596 6469140,202 508399,873 31,311
 2597 6469140,387 508398,674 31,544
 2598 6469144,593 508398,948 31,175
 2599 6469144,323 508398,219 31,355
 2600 6469148,895 508394,892 31,193
 2601 6469148,205 508394,581 31,376
 2602 6469148,059 508391,767 31,225
 2603 6469147,381 508391,885 31,309
 2604 6469149,725 508390,420 31,153
 2605 6469149,617 508389,548 31,364
 2606 6469152,584 508388,707 31,285
 2607 6469151,727 508388,352 31,459
 2608 6469151,582 508385,001 31,610
 2609 6469151,127 508384,224 31,746
 2610 6469154,530 508382,706 31,734
 2611 6469154,077 508382,395 31,881
 2612 6469155,418 508377,165 31,749
 2613 6469154,944 508376,760 31,913
 2614 6469157,314 508374,259 31,721
 2615 6469157,200 508373,167 31,992
 2616 6469160,525 508371,786 31,846
 2617 6469159,672 508370,891 31,850
 2618 6469162,381 508369,094 31,702
 2619 6469162,662 508368,097 31,999
 2620 6469162,658 508368,097 31,964
 2621 6469167,756 508365,104 31,838
 2622 6469168,449 508363,612 32,022
 2623 6469174,612 508363,708 31,854
 2624 6469174,883 508362,694 31,889
 2625 6469179,983 508362,509 31,781
 2626 6469179,761 508361,550 31,990
 2627 6469182,018 508358,190 31,935
 2628 6469181,090 508357,809 32,132
 2629 6469182,560 508355,326 31,891
 2630 6469182,119 508354,547 31,914
 2631 6469184,292 508360,113 31,867
 2632 6469185,654 508363,594 31,669
 2633 6469189,459 508365,444 31,840
 2634 6469181,492 508369,603 31,746
 2635 6469176,067 508374,735 31,661
 2636 6469173,908 508371,573 31,674
 2637 6469177,654 508378,262 31,583
 2638 6469173,159 508380,820 31,471
 2639 6469169,235 508374,007 31,618
 2640 6469164,158 508378,143 31,575
 2641 6469166,852 508383,453 31,342
 2642 6469162,784 508387,813 31,083

2643 6469158,603 508380,687 31,631
 2644 6469155,343 508388,744 31,250
 2645 6469157,514 508393,623 30,966
 2646 6469160,185 508397,186 30,908
 2647 6469155,009 508400,219 30,848
 2648 6469153,443 508395,531 31,002
 2649 6469150,872 508392,171 31,093
 2650 6469149,025 508399,423 31,121
 2651 6469152,164 508402,321 31,068
 2652 6469146,711 508404,923 31,058
 2653 6469145,406 508401,930 31,030
 2654 6469141,764 508403,936 31,017
 2655 6469145,683 508406,353 31,111
 2656 6469144,823 508410,482 31,119
 2657 6469151,249 508408,036 31,066
 2658 6469157,863 508404,907 31,010
 2659 6469171,143 508420,577 31,153
 2660 6469170,543 508420,261 31,088
 2661 6469165,485 508406,114 31,013
 2662 6469160,510 508409,958 31,179
 2663 6469155,125 508411,883 31,072
 2664 6469149,826 508414,874 30,937
 2665 6469144,926 508417,510 30,982
 2666 6469147,670 508423,357 30,743
 2667 6469154,040 508422,260 30,649
 2668 6469159,436 508421,040 30,701
 2669 6469160,551 508426,097 30,653
 2670 6469163,709 508431,715 30,546
 2671 6469157,375 508433,920 30,556
 2672 6469154,560 508428,193 30,756
 2673 6469151,462 508424,475 30,744
 2674 6469145,772 508428,830 30,712
 2675 6469149,898 508434,354 30,761
 2676 6469152,658 508437,572 30,632
 2677 6469152,536 508438,110 30,509
 2678 6469153,480 508440,088 30,528
 2679 6469154,810 508442,253 32,055
 2680 6469157,774 508438,011 30,463
 2681 6469158,369 508440,347 32,195
 2682 6469160,193 508436,505 30,552
 2683 6469160,146 508438,925 31,305
 2684 6469160,097 508441,438 31,686
 2685 6469158,729 508441,800 32,905
 2686 6469160,662 508444,067 31,412
 2687 6469158,636 508444,308 33,223
 2688 6469161,140 508446,017 31,234
 2689 6469159,669 508446,432 31,379
 2690 6469163,471 508445,011 31,258
 2691 6469163,530 508445,973 31,108
 2692 6469166,056 508444,509 31,145
 2693 6469163,605 508443,589 31,618
 2694 6469163,640 508443,372 31,446
 2695 6469165,686 508441,521 33,356
 2696 6469163,513 508439,550 31,301

2697	6469165,797	508440,001	33,245	2751	6469198,352	508406,615	31,280
2698	6469163,349	508437,825	31,318	2752	6469195,099	508405,344	33,224
2699	6469163,626	508436,083	30,576	2753	6469193,998	508404,833	33,015
2700	6469167,619	508434,786	30,568	2754	6469196,012	508401,820	33,205
2701	6469167,585	508434,789	30,542	2755	6469197,167	508402,688	33,264
2702	6469167,810	508437,506	31,935	2756	6469196,840	508400,275	31,845
2703	6469169,339	508439,598	32,966	2757	6469196,215	508399,303	31,601
2704	6469169,714	508440,472	33,249	2758	6469198,122	508398,472	31,410
2705	6469166,022	508441,235	33,199	2759	6469198,192	508401,035	31,353
2706	6469165,833	508440,496	33,371	2760	6469199,425	508400,014	31,224
2707	6469173,563	508436,504	31,295	2761	6469199,876	508404,137	31,561
2708	6469172,752	508435,993	31,242	2762	6469202,863	508400,558	31,130
2709	6469175,556	508437,183	31,071	2763	6469206,374	508398,154	31,141
2710	6469175,552	508437,185	31,023	2764	6469209,231	508394,318	31,106
2711	6469175,034	508440,452	30,976	2765	6469209,690	508390,157	31,083
2712	6469176,866	508434,660	30,954	2766	6469207,058	508388,823	32,017
2713	6469171,687	508434,701	30,588	2767	6469205,297	508389,278	31,529
2714	6469174,015	508434,533	32,048	2768	6469205,855	508393,019	33,358
2715	6469174,661	508434,695	32,278	2769	6469206,461	508393,571	33,159
2716	6469174,717	508432,095	31,914	2770	6469205,383	508394,965	33,027
2717	6469174,279	508431,696	31,828	2771	6469204,525	508394,920	32,795
2718	6469176,384	508431,377	30,916	2772	6469203,005	508396,048	33,054
2719	6469172,747	508431,170	30,622	2773	6469203,413	508396,984	33,320
2720	6469174,920	508427,371	30,570	2774	6469201,571	508398,173	33,320
2721	6469175,862	508428,000	31,405	2775	6469201,169	508397,634	33,230
2722	6469176,779	508428,629	31,304	2776	6469198,852	508396,923	31,801
2723	6469178,220	508429,333	30,990	2777	6469198,190	508396,283	31,553
2724	6469178,780	508426,197	32,078	2778	6469201,279	508393,183	31,560
2725	6469179,123	508426,706	32,002	2779	6469204,451	508389,778	31,864
2726	6469179,709	508428,231	31,138	2780	6469206,977	508386,216	31,573
2727	6469182,388	508425,078	32,971	2781	6469209,302	508382,690	32,282
2728	6469181,731	508424,511	32,996	2782	6469209,485	508379,618	32,153
2729	6469185,945	508424,776	31,436	2783	6469208,641	508378,122	31,567
2730	6469184,670	508422,252	33,376	2784	6469206,875	508374,199	31,837
2731	6469184,664	508422,234	33,441	2785	6469205,393	508374,807	30,901
2732	6469183,933	508421,625	33,160	2786	6469203,294	508369,790	32,949
2733	6469186,462	508418,971	32,873	2787	6469201,377	508371,549	31,234
2734	6469187,779	508419,791	33,006	2788	6469198,593	508366,767	32,530
2735	6469190,277	508421,116	30,954	2789	6469196,939	508368,450	31,373
2736	6469189,882	508415,878	33,605	2790	6469195,563	508365,045	31,674
2737	6469189,190	508415,499	33,346	2791	6469196,185	508363,722	32,596
2738	6469191,256	508413,905	33,623	2792	6469191,892	508359,844	32,008
2739	6469190,374	508413,550	33,500	2793	6469192,801	508358,960	32,416
2740	6469193,983	508411,629	31,007	2794	6469188,172	508356,487	32,001
2741	6469192,498	508409,723	31,135	2795	6469189,114	508355,225	32,870
2742	6469189,330	508409,502	31,598	2796	6469185,800	508354,820	31,980
2743	6469188,024	508409,324	30,821	2797	6469185,779	508353,927	32,459
2744	6469185,591	508413,432	30,682	2798	6469180,537	508353,135	31,914
2745	6469182,959	508415,998	30,631	2799	6469176,561	508349,074	31,940
2746	6469180,467	508418,829	30,696	2800	6469177,830	508346,589	31,918
2747	6469177,677	508422,973	30,649	2801	6469173,252	508342,526	31,875
2748	6469191,071	508406,670	31,556	2802	6469169,689	508339,686	31,770
2749	6469193,001	508407,672	31,467	2803	6469166,458	508336,005	31,727
2750	6469196,053	508408,771	31,023	2804	6469164,709	508333,849	31,967

2805 6469158,467 508336,380 31,693
 2806 6469161,896 508339,862 31,646
 2807 6469165,395 508343,733 31,696
 2808 6469167,892 508347,004 31,707
 2809 6469171,503 508351,346 31,846
 2810 6469175,878 508356,137 31,986
 2811 6469178,197 508359,697 31,952
 2812 6469172,722 508365,367 31,794
 2813 6469169,903 508360,974 32,063
 2814 6469166,385 508357,087 31,888
 2815 6469164,173 508353,367 31,828
 2816 6469161,080 508350,387 31,667
 2817 6469157,928 508346,883 31,640
 2818 6469154,958 508343,451 31,597
 2819 6469151,309 508339,767 31,739
 2820 6469143,344 508344,599 31,876
 2821 6469147,222 508348,715 31,803
 2822 6469151,760 508354,716 31,744
 2823 6469156,903 508360,708 31,930
 2824 6469160,182 508365,649 31,996
 2825 6469153,479 508370,800 32,026
 2826 6469148,519 508365,314 31,922
 2827 6469143,613 508359,131 31,879
 2828 6469138,364 508353,555 31,891
 2829 6469134,148 508348,065 32,004
 2830 6469127,906 508354,316 31,858
 2831 6469133,347 508360,836 31,834
 2832 6469138,575 508367,522 31,749
 2833 6469143,044 508371,903 31,867
 2834 6469146,952 508376,917 31,922
 2835 6469149,600 508380,711 31,874
 2836 6469142,863 508387,002 31,597
 2837 6469139,620 508382,477 31,755
 2838 6469134,676 508375,742 31,814
 2839 6469129,792 508369,499 31,686
 2840 6469124,373 508362,409 31,681
 2841 6469117,961 508368,760 31,574
 2842 6469124,160 508376,133 31,688
 2843 6469129,898 508382,893 31,741
 2844 6469134,872 508388,705 31,613
 2845 6469138,374 508393,913 31,510
 2846 6469129,168 508393,581 31,793
 2847 6469124,310 508387,560 31,733
 2848 6469119,093 508380,940 31,680
 2849 6469114,106 508374,827 31,572
 2850 6469107,718 508382,721 31,583
 2851 6469113,015 508388,421 31,827
 2852 6469116,947 508392,711 31,849
 2853 6469119,844 508396,577 31,899
 2854 6469116,194 508403,774 31,799
 2855 6469111,828 508399,163 31,879
 2856 6469106,809 508393,423 31,703
 2857 6469102,192 508388,354 31,604
 2858 6469096,963 508395,751 31,622

2859 6469103,098 508402,477 31,828
 2860 6469107,897 508407,588 31,939
 2861 6469110,997 508411,414 31,665
 2862 6469105,781 508416,900 31,523
 2863 6469105,768 508416,921 31,539
 2864 6469101,010 508412,157 31,629
 2865 6469096,419 508408,657 31,659
 2866 6469090,496 508404,057 31,551
 2867 6469086,305 508408,139 31,569
 2868 6469091,029 508413,090 31,617
 2869 6469096,927 508417,717 31,833
 2870 6469089,515 508420,252 31,777
 2871 6469085,618 508414,054 31,718
 2872 6469081,500 508408,667 31,572
 2873 6469076,331 508410,625 31,855
 2874 6469079,094 508417,248 31,878
 2875 6469083,530 508424,980 31,861
 2876 6469088,066 508420,659 31,868
 2877 6469079,183 508428,412 32,273
 2878 6469075,524 508420,309 31,842
 2879 6469072,150 508415,852 31,961
 2880 6469070,746 508416,403 31,984
 2881 6469072,753 508413,826 31,754
 2882 6469069,246 508415,241 32,197
 2883 6469070,700 508413,926 31,009
 2884 6469071,278 508413,711 31,006
 2885 6469070,638 508402,030 31,707
 2886 6469069,079 508402,585 30,705
 2887 6469068,315 508402,639 30,687
 2888 6469065,940 508402,188 32,030
 2889 6469058,183 508403,256 31,631
 2890 6469056,325 508403,213 30,436
 2891 6469055,552 508403,287 30,495
 2892 6469053,406 508403,720 31,430
 2893 6469072,267 508420,709 32,059
 2894 6469073,578 508427,433 32,312
 2895 6469273,250 508394,450 32,600
 2896 6469261,900 508399,020 32,290
 2897 6469249,170 508410,180 31,260
 2898 6469248,290 508426,190 31,220
 2899 6469269,300 508376,760 32,110
 2900 6469255,820 508365,290 32,340
 2901 6469254,270 508388,910 31,730
 2902 6469232,690 508436,770 31,160
 2903 6469241,920 508386,110 31,320
 2904 6469231,310 508370,650 31,850
 2905 6469240,480 508352,550 32,470
 2906 6469223,940 508382,160 31,290
 2907 6469234,440 508360,060 32,720
 2908 6469223,580 508360,720 32,620
 2909 6469209,100 508364,580 32,590
 2910 6469216,350 508378,830 31,450
 2911 6469199,960 508356,240 32,140
 2912 6469229,250 508394,740 31,180

2913 6469219,470 508394,280 31,150
 2914 6469209,730 508350,200 31,860
 2915 6469215,480 508355,510 32,070
 2916 6469230,080 508350,050 32,100
 2917 6469223,920 508335,370 31,720
 2918 6469202,970 508342,750 31,770
 2919 6469184,400 508347,710 32,190
 2920 6469187,850 508335,820 31,880
 2921 6469214,840 508325,470 31,870
 2922 6469193,920 508317,850 31,690
 2923 6469199,540 508330,540 31,730
 2924 6469175,780 508334,820 32,190
 2925 6469176,980 508322,390 32,270
 2926 6469183,070 508309,140 31,900
 2927 6469190,040 508297,420 31,750
 2928 6469177,860 508286,110 32,270
 2929 6469172,390 508303,600 32,380
 2930 6469169,880 508320,140 32,220
 2931 6469158,810 508323,940 31,780
 2932 6469160,750 508310,730 31,820
 2933 6469162,280 508296,990 31,690
 2934 6469165,030 508279,440 31,780
 2935 6469146,150 508312,380 31,600
 2936 6469148,050 508299,190 31,660
 2937 6469152,210 508288,750 31,740
 2938 6469157,410 508266,220 31,300
 2939 6469145,640 508277,830 31,420
 2940 6469135,560 508288,300 31,370
 2941 6469134,530 508269,160 31,460
 2942 6469143,920 508254,100 31,150
 2943 6469118,040 508278,610 31,490
 2944 6469124,590 508297,210 31,580
 2945 6469136,910 508306,930 31,670
 2946 6469147,360 508330,340 31,880
 2947 6469136,780 508330,940 31,810
 2948 6469127,630 508340,320 31,920
 2949 6469128,340 508320,980 31,640
 2950 6469121,690 508312,660 31,520
 2951 6469113,820 508299,260 31,370
 2952 6469102,350 508293,530 31,300
 2953 6469091,550 508303,100 31,390
 2954 6469102,370 508312,260 31,280
 2955 6469109,910 508323,130 31,450
 2956 6469122,970 508334,450 31,760
 2957 6469110,540 508340,110 31,680
 2958 6469118,280 508348,600 31,710
 2959 6469087,740 508318,170 31,060
 2960 6469079,690 508313,390 31,190
 2961 6469099,870 508333,220 31,390
 2962 6469112,740 508360,880 31,710
 2963 6469104,390 508371,840 31,630
 2964 6469096,090 508382,500 31,650
 2965 6469087,100 508395,550 31,570
 2966 6469079,440 508402,550 31,750

2967 6469076,980 508388,620 31,380
 2968 6469083,230 508382,600 31,310
 2969 6469094,370 508371,310 31,210
 2970 6469105,390 508360,280 31,550
 2971 6469101,410 508352,090 31,300
 2972 6469089,300 508359,690 31,610
 2973 6469091,280 508347,490 31,270
 2974 6469087,020 508335,660 31,330
 2975 6469077,490 508330,810 31,260
 2976 6469067,920 508322,630 31,030
 2977 6469074,970 508348,140 31,230
 2978 6469078,670 508361,800 31,220
 2979 6469112,390 508314,620 31,420
 2980 6469137,960 508322,670 31,770
 2981 6469203,170 508308,380 31,760
 2982 6469213,770 508341,690 31,700
 2983 6469232,000 508385,020 31,250
 2984 6469245,670 508401,620 31,090
 2985 6469209,740 508419,030 31,210
 2986 6469219,370 508413,540 31,070
 2987 6469205,870 508410,650 31,030
 2988 6469235,290 508413,640 31,240
 2989 6469226,920 508424,890 31,230
 2990 6469215,550 508461,370 31,280
 2991 6469214,310 508430,720 31,210
 2992 6469198,960 508425,510 31,250
 2993 6469206,300 508437,940 31,410
 2994 6469197,640 508445,700 31,330
 2995 6469204,470 508467,630 31,190
 2996 6469220,950 508454,880 31,660
 2997 6469182,680 508435,790 30,780
 2998 6469186,410 508452,560 31,230
 2999 6469197,680 508459,920 31,430
 3000 6469192,050 508483,090 31,160
 3001 6469180,050 508474,830 31,200
 3002 6469169,150 508454,490 30,830
 3003 6469169,130 508472,220 30,750
 3004 6469155,280 508456,220 30,870
 3005 6469158,410 508472,490 30,770
 3006 6469163,170 508490,690 30,800
 3007 6469172,630 508493,960 30,780
 3008 6469142,700 508456,900 30,810
 3009 6469143,510 508477,440 30,860
 3010 6469209,050 508452,240 31,310
 3011 6469177,990 508464,860 31,160
 3012 6469161,860 508514,230 30,930
 3013 6469151,220 508506,710 30,880
 3014 6469150,330 508497,260 31,190
 3015 6469142,460 508491,100 31,080
 3016 6469128,270 508487,840 30,760
 3017 6469130,380 508470,150 31,110
 3018 6469116,660 508472,250 31,290
 3019 6469134,330 508504,230 31,070
 3020 6469115,270 508495,520 30,830

3021 6469140,580 508523,800 31,050
 3022 6469127,640 508530,810 31,090
 3023 6469139,720 508536,450 31,120
 3024 6469154,220 508524,460 30,930
 3025 6469126,880 508516,870 31,140
 3026 6469114,030 508509,660 30,920
 3027 6469107,610 508480,620 31,200
 3028 6469094,940 508483,060 31,310
 3029 6469102,160 508499,980 30,940
 3030 6469102,080 508514,730 30,870
 3031 6469111,540 508523,460 30,910
 3032 6469115,440 508539,270 30,950
 3033 6469102,840 508530,440 30,880
 3034 6469104,900 508543,880 30,870
 3035 6469128,440 508545,830 30,790
 3036 6469117,850 508553,290 30,890
 3037 6469106,200 508555,330 30,790
 3038 6469106,490 508568,750 30,950
 3039 6469091,790 508496,310 31,380
 3040 6469083,800 508495,070 30,520
 3041 6469083,570 508493,650 30,700
 3042 6469083,390 508492,020 31,500
 3043 6469085,920 508493,690 31,440
 3044 6469081,300 508494,610 31,810
 3045 6469085,750 508506,030 30,470
 3046 6469083,170 508505,920 31,770
 3047 6469087,740 508506,010 31,290
 3048 6469087,800 508520,230 30,400
 3049 6469085,320 508520,880 31,750
 3050 6469089,910 508520,580 31,230
 3051 6469090,300 508536,140 30,380
 3052 6469087,790 508534,960 31,560
 3053 6469091,770 508533,920 31,070
 3054 6469093,240 508552,210 30,240
 3055 6469095,210 508550,800 31,050
 3056 6469090,840 508552,730 31,570
 3057 6469095,600 508567,600 30,210
 3058 6469097,860 508567,000 31,080
 3059 6469093,680 508569,970 31,670
 3060 6469086,410 508582,650 30,040
 3061 6469082,090 508582,690 30,940
 3062 6469089,950 508578,200 31,600
 3063 6469082,930 508564,430 30,020
 3064 6469086,800 508563,410 31,510
 3065 6469078,870 508565,500 31,160
 3066 6469079,700 508545,460 30,100
 3067 6469076,100 508545,300 31,220
 3068 6469083,270 508543,420 31,480
 3069 6469076,950 508528,000 30,230
 3070 6469073,490 508526,740 31,490
 3071 6469080,040 508527,190 31,510
 3072 6469074,340 508514,050 30,510
 3073 6469072,090 508513,470 31,580
 3074 6469076,160 508512,710 31,450

3075 6469072,250 508500,220 31,040
 3076 6469070,440 508502,000 31,830
 3077 6469074,450 508500,810 31,540
 3078 6469055,070 508331,470 30,250
 3079 6469057,120 508332,420 31,400
 3080 6469052,730 508332,830 31,660
 3081 6469059,130 508353,250 30,170
 3082 6469056,850 508353,880 31,800
 3083 6469061,230 508352,660 31,720
 3084 6469062,610 508370,800 30,300
 3085 6469064,930 508371,210 31,840
 3086 6469060,770 508372,780 31,890
 3087 6469065,860 508388,870 30,470
 3088 6469068,100 508389,220 31,670
 3089 6469063,860 508390,170 32,010
 3090 6469064,310 508341,340 31,310
 3091 6469067,150 508362,220 31,400
 3092 6469071,880 508376,810 31,340
 3093 6469054,260 508395,630 30,250
 3094 6469056,590 508395,010 31,540
 3095 6469051,480 508395,400 31,580
 3096 6469052,500 508383,880 30,240
 3097 6469049,390 508384,600 31,450
 3098 6469052,080 508381,550 31,880
 3099 6469055,180 508383,930 31,830
 3100 6469044,280 508346,380 30,060
 3101 6469041,810 508347,050 30,980
 3102 6469047,370 508345,550 31,250
 3103 6469047,440 508361,830 30,060
 3104 6469045,020 508364,280 31,450
 3105 6469050,450 508361,020 31,440
 3106 6469049,550 508369,770 30,010
 3107 6469052,230 508370,420 31,550
 3108 6469046,850 508370,330 31,060
 3109 6469047,790 508373,780 30,110
 3110 6469048,320 508376,760 31,870
 3111 6469045,120 508372,320 31,290
 3112 6469037,600 508382,880 30,100
 3113 6469038,440 508385,730 31,570
 3114 6469035,690 508381,690 31,120
 3115 6469027,040 508393,350 30,110
 3116 6469025,800 508391,760 31,260
 3117 6469028,340 508395,730 31,750
 3118 6469012,990 508407,710 30,220
 3119 6469010,990 508406,170 31,260
 3120 6469012,770 508411,490 31,640
 3121 6468997,090 508423,720 30,240
 3122 6468995,110 508421,320 31,180
 3123 6468997,690 508427,050 31,710
 3124 6468984,920 508435,980 30,250
 3125 6468983,520 508433,540 31,270
 3126 6468986,680 508438,040 31,920
 3127 6468973,000 508447,510 30,230
 3128 6468972,610 508444,750 31,130

3129 6468975,360 508448,530 31,680
 3130 6468959,710 508459,500 30,250
 3131 6468962,180 508460,820 31,370
 3132 6468959,470 508456,850 31,230
 3133 6468946,300 508472,770 30,280
 3134 6468946,620 508477,250 31,670
 3135 6468944,180 508470,940 31,410
 3136 6468934,440 508484,760 30,230
 3137 6468934,780 508488,820 31,890
 3138 6468931,690 508483,780 31,640
 3139 6468919,920 508499,250 30,310
 3140 6468922,400 508500,750 32,290
 3141 6468919,210 508497,220 31,390
 3142 6468905,110 508513,100 30,380
 3143 6468906,830 508515,620 32,140
 3144 6468903,750 508511,810 31,450
 3145 6468893,860 508520,880 30,380
 3146 6468892,740 508524,790 31,700
 3147 6468889,480 508520,000 31,400
 3148 6468872,770 508527,350 30,370
 3149 6468875,070 508529,760 31,820
 3150 6468874,310 508524,500 31,380
 3151 6468860,700 508529,630 30,380
 3152 6468862,430 508532,430 31,990
 3153 6468859,940 508527,210 31,470
 3154 6469031,730 508358,990 31,260
 3155 6469037,740 508369,160 31,050
 3156 6469021,860 508374,550 31,190
 3157 6469028,380 508379,960 31,090
 3158 6469010,150 508378,270 31,100
 3159 6469017,010 508392,070 31,110
 3160 6469003,870 508389,780 31,080
 3161 6469005,760 508403,870 31,130
 3162 6468998,950 508404,560 31,120
 3163 6468987,310 508407,400 31,340
 3164 6468990,990 508416,320 31,020
 3165 6468974,460 508414,290 31,180
 3166 6468979,290 508429,080 31,160
 3167 6468970,310 508434,100 31,240
 3168 6468964,050 508443,300 31,300
 3169 6468960,440 508431,610 31,220
 3170 6468951,030 508442,140 31,130
 3171 6468953,730 508450,450 31,360
 3172 6468943,330 508447,980 31,280
 3173 6468933,930 508459,960 31,350
 3174 6468945,320 508463,310 31,230
 3175 6468937,020 508469,360 31,380
 3176 6468918,290 508470,650 31,250
 3177 6468926,330 508476,410 31,500
 3178 6468915,310 508491,790 31,220
 3179 6468909,130 508484,650 31,350
 3180 6468893,670 508498,710 31,440
 3181 6468902,840 508496,220 31,480
 3182 6468903,200 508506,660 31,360

3183 6468890,250 508510,530 31,430
 3184 6468881,780 508510,430 31,150
 3185 6468872,790 508514,120 31,420
 3186 6468864,910 508542,600 31,410
 3187 6468875,720 508553,940 31,660
 3188 6468881,810 508568,830 31,820
 3189 6468896,010 508576,280 32,100
 3190 6468903,400 508570,470 31,980
 3191 6468892,980 508562,860 31,970
 3192 6468887,690 508550,930 31,560
 3193 6468877,970 508543,240 31,360
 3194 6468890,250 508542,910 31,520
 3195 6468910,890 508559,250 32,300
 3196 6468903,680 508554,400 31,910
 3197 6468900,740 508541,180 31,730
 3198 6468897,810 508527,220 31,820
 3199 6468909,990 508549,730 31,900
 3200 6468910,000 508529,780 31,600
 3201 6468914,740 508518,090 31,630
 3202 6468926,280 508514,190 31,600
 3203 6468930,410 508505,510 31,650
 3204 6468934,200 508513,950 31,630
 3205 6468937,780 508502,800 31,610
 3206 6468940,990 508492,280 31,510
 3207 6468947,490 508499,140 31,540
 3208 6468948,260 508486,130 31,620
 3209 6468951,600 508495,360 31,720
 3210 6468955,280 508490,280 31,720
 3211 6468951,340 508481,900 31,760
 3212 6468955,480 508477,480 31,610
 3213 6468960,420 508487,310 31,840
 3214 6468962,230 508470,600 31,830
 3215 6468965,750 508479,610 31,610
 3216 6468970,380 508474,560 31,510
 3217 6468968,370 508466,330 31,630
 3218 6468975,850 508456,060 31,690
 3219 6468979,270 508464,960 31,520
 3220 6468987,180 508457,810 31,670
 3221 6468981,690 508450,320 31,870
 3222 6468990,490 508445,650 31,620
 3223 6468997,570 508446,780 31,690
 3224 6468996,270 508435,750 31,830
 3225 6469003,630 508442,820 31,810
 3226 6469014,510 508439,380 31,750
 3227 6469006,500 508432,930 31,380
 3228 6469013,700 508428,840 31,190
 3229 6469006,830 508424,420 31,760
 3230 6469021,100 508439,680 31,740
 3231 6469028,710 508440,360 32,080
 3232 6469023,760 508433,020 31,740
 3233 6469017,530 508424,280 31,290
 3234 6469013,370 508416,480 31,670
 3235 6469021,270 508407,110 31,910
 3236 6469024,340 508418,010 31,330

3237 6469029,940 508430,290 31,670
 3238 6469036,530 508435,060 32,130
 3239 6469036,600 508425,860 31,780
 3240 6469036,310 508419,620 31,460
 3241 6469031,660 508411,630 31,670
 3242 6469035,560 508396,930 31,680
 3243 6469040,570 508410,340 31,540
 3244 6469043,420 508417,730 31,750
 3245 6469047,350 508411,800 31,710
 3246 6469046,440 508404,640 31,490
 3247 6469041,950 508397,940 31,460
 3248 6468904,150 508584,060 32,470
 3249 6468895,770 508593,490 32,160
 3250 6468890,340 508584,560 32,340
 3251 6468879,860 508582,860 32,380
 3252 6468872,070 508569,440 31,670
 3253 6468868,190 508555,130 31,450
 3254 6468858,790 508556,420 31,460
 3255 6468854,750 508540,620 31,360
 3256 6468841,900 508554,200 31,580
 3257 6468848,460 508566,400 31,590
 3258 6468859,390 508577,210 31,700
 3259 6468867,060 508590,230 32,130
 3260 6468879,500 508597,340 32,010
 3261 6468889,580 508604,740 32,100
 3262 6468881,640 508611,250 32,210
 3263 6468872,030 508608,600 32,170
 3264 6468861,730 508604,620 31,810
 3265 6468856,280 508593,470 31,990
 3266 6468846,520 508577,060 31,660
 3267 6468839,410 508588,420 31,970
 3268 6468850,910 508605,320 31,790
 3269 6468833,790 508578,110 31,670
 3270 6468826,700 508563,890 31,520
 3271 6468818,200 508572,460 31,890
 3272 6468822,470 508585,190 31,780
 3273 6468833,830 508602,110 31,950
 3274 6468839,220 508615,340 31,870
 3275 6468847,780 508621,100 31,710
 3276 6468861,380 508623,420 31,830
 3277 6468870,680 508620,980 32,110
 3278 6468863,800 508639,740 32,370
 3279 6468869,790 508629,810 32,130
 3280 6468872,500 508646,590 32,480
 3281 6468854,670 508633,690 32,160
 3282 6468860,550 508655,800 32,390
 3283 6468854,460 508649,520 32,310
 3284 6468844,190 508640,430 32,180
 3285 6468838,830 508629,930 31,730
 3286 6468825,440 508621,010 31,710
 3287 6468820,790 508608,270 31,830
 3288 6468812,330 508597,000 31,710
 3289 6468808,570 508583,820 31,730
 3290 6468798,120 508589,770 31,600

3291 6468802,240 508602,920 31,800
 3292 6468806,840 508617,490 31,590
 3293 6468817,190 508627,520 31,780
 3294 6468827,780 508638,290 31,960
 3295 6468829,900 508649,980 31,910
 3296 6468838,300 508659,690 32,170
 3297 6468849,000 508662,640 32,100
 3298 6468843,180 508663,540 32,310
 3299 6468841,780 508666,970 33,740
 3300 6468838,230 508667,820 33,900
 3301 6468836,390 508664,500 32,050
 3302 6468834,500 508669,950 32,370
 3303 6468822,290 508665,430 33,100
 3304 6468818,980 508671,640 32,970
 3305 6468815,830 508674,960 32,150
 3306 6468820,180 508665,640 33,040
 3307 6468816,080 508666,570 31,930
 3308 6468820,020 508660,390 31,960
 3309 6468823,490 508660,880 31,770
 3310 6468820,650 508653,380 31,930
 3311 6468817,860 508643,980 31,740
 3312 6468843,890 508651,810 32,140
 3313 6468809,030 508656,350 31,650
 3314 6468806,270 508676,520 32,030
 3315 6468807,250 508643,300 31,810
 3316 6468780,380 508594,240 31,650
 3317 6468788,000 508610,280 31,600
 3318 6468790,710 508622,340 31,850
 3319 6468799,650 508634,350 31,970
 3320 6468793,010 508653,300 31,800
 3321 6468799,810 508668,260 31,770
 3322 6468791,850 508679,750 32,160
 3323 6468779,680 508687,580 32,200
 3324 6468779,800 508673,710 31,790
 3325 6468784,680 508664,750 31,860
 3326 6468779,140 508657,250 31,660
 3327 6468786,350 508643,580 31,810
 3328 6468777,230 508637,770 31,970
 3329 6468775,140 508624,730 31,800
 3330 6468774,850 508609,920 31,570
 3331 6468765,100 508599,300 31,850
 3332 6468762,770 508618,330 31,580
 3333 6468764,490 508634,720 31,850
 3334 6468768,510 508652,750 31,930
 3335 6468762,280 508664,780 31,760
 3336 6468769,850 508670,250 31,820
 3337 6468770,490 508683,820 31,980
 3338 6468760,330 508698,870 32,380
 3339 6468757,740 508683,610 32,090
 3340 6468750,300 508669,800 31,880
 3341 6468753,800 508658,970 31,830
 3342 6468753,230 508643,750 31,710
 3343 6468753,570 508627,790 31,600
 3344 6468748,700 508617,670 31,830

3345	6468753,180	508603,920	31,680	3399	6468571,160	508680,240	31,450
3346	6468810,340	508683,490	32,230	3400	6468568,950	508680,640	32,140
3347	6468808,230	508684,650	32,700	3401	6468572,890	508678,690	32,180
3348	6468807,230	508682,160	32,130	3402	6468568,880	508666,680	31,400
3349	6468793,810	508684,990	32,350	3403	6468566,940	508667,300	32,400
3350	6468794,370	508688,090	33,160	3404	6468570,460	508665,740	31,990
3351	6468788,890	508693,480	32,920	3405	6468566,700	508653,310	31,360
3352	6468787,540	508691,810	32,320	3406	6468564,570	508654,930	32,540
3353	6468770,900	508698,150	33,130	3407	6468568,940	508654,950	32,100
3354	6468772,070	508696,180	32,360	3408	6468743,750	508688,600	32,350
3355	6468779,770	508698,300	33,350	3409	6468742,520	508677,600	32,010
3356	6468779,550	508696,220	33,500	3410	6468740,510	508660,810	31,730
3357	6468779,180	508693,960	32,440	3411	6468738,850	508648,400	31,870
3358	6468761,950	508700,830	32,880	3412	6468736,490	508626,140	31,840
3359	6468701,340	508708,980	33,160	3413	6468731,700	508608,070	31,760
3360	6468700,720	508705,680	32,480	3414	6468718,050	508609,580	31,660
3361	6468691,470	508705,110	32,390	3415	6468719,690	508624,330	31,640
3362	6468708,440	508707,140	33,360	3416	6468725,240	508638,900	31,810
3363	6468709,130	508704,660	32,410	3417	6468728,460	508655,400	31,790
3364	6468720,640	508702,980	32,290	3418	6468726,420	508671,010	31,740
3365	6468734,330	508705,950	32,950	3419	6468730,780	508687,160	32,110
3366	6468733,540	508703,470	32,290	3420	6468720,420	508689,640	32,150
3367	6468748,590	508702,020	32,600	3421	6468716,950	508670,140	31,920
3368	6468749,710	508705,080	32,580	3422	6468715,430	508652,560	31,860
3369	6468603,400	508733,360	33,040	3423	6468707,990	508638,910	31,650
3370	6468604,140	508730,750	32,440	3424	6468708,270	508624,590	31,960
3371	6468603,410	508726,520	32,360	3425	6468675,080	508627,850	32,650
3372	6468607,990	508734,320	32,960	3426	6468701,590	508610,950	32,010
3373	6468609,270	508731,890	32,360	3427	6468692,450	508629,170	32,220
3374	6468617,880	508733,600	33,220	3428	6468684,020	508641,640	32,040
3375	6468618,900	508731,850	32,460	3429	6468696,190	508646,720	31,860
3376	6468624,990	508735,470	33,130	3430	6468699,340	508660,310	31,800
3377	6468626,410	508733,700	33,070	3431	6468688,890	508659,210	31,960
3378	6468625,300	508731,760	32,410	3432	6468689,370	508675,880	31,790
3379	6468631,130	508735,520	32,210	3433	6468698,970	508673,060	31,950
3380	6468631,260	508733,530	32,500	3434	6468706,610	508669,710	31,930
3381	6468639,690	508731,900	32,750	3435	6468709,840	508682,850	31,870
3382	6468638,030	508731,420	32,440	3436	6468709,890	508687,450	32,170
3383	6468564,550	508710,310	32,390	3437	6468711,520	508697,830	32,290
3384	6468567,340	508708,400	32,330	3438	6468697,430	508697,950	32,220
3385	6468571,330	508708,270	32,290	3439	6468694,910	508691,810	31,970
3386	6468574,980	508709,000	32,340	3440	6468681,330	508707,060	32,230
3387	6468573,290	508711,640	33,290	3441	6468681,910	508692,710	31,930
3388	6468570,270	508710,710	33,140	3442	6468675,690	508678,790	31,870
3389	6468566,940	508711,060	33,210	3443	6468672,420	508665,720	31,830
3390	6468575,980	508719,860	32,260	3444	6468677,220	508661,670	31,650
3391	6468575,890	508705,530	31,390	3445	6468674,730	508642,740	31,970
3392	6468577,180	508706,620	32,000	3446	6468669,750	508650,400	31,750
3393	6468574,120	508706,690	32,030	3447	6468666,470	508628,510	32,600
3394	6468576,020	508708,360	32,100	3448	6468680,220	508622,460	32,740
3395	6468574,120	508697,970	31,460	3449	6468658,980	508645,110	32,060
3396	6468572,280	508698,000	31,870	3450	6468649,380	508634,720	32,130
3397	6468573,130	508692,510	31,400	3451	6468636,550	508631,630	32,220
3398	6468571,350	508692,820	31,750	3452	6468642,450	508651,130	32,080

3453	6468627,620	508644,910	32,280	3507	6468543,330	508657,820	32,180
3454	6468628,360	508656,730	32,020	3508	6468545,580	508670,780	32,370
3455	6468612,780	508660,860	32,150	3509	6468546,880	508685,090	32,150
3456	6468617,260	508644,080	32,200	3510	6468554,090	508695,380	32,220
3457	6468598,750	508641,250	32,150	3511	6468545,980	508697,500	32,150
3458	6468607,740	508655,610	32,170	3512	6468552,920	508705,540	32,250
3459	6468616,640	508672,060	32,130	3513	6468546,610	508709,730	32,290
3460	6468606,930	508680,870	32,210	3514	6468557,220	508713,650	32,380
3461	6468600,360	508673,010	32,320	3515	6468544,670	508721,650	32,600
3462	6468595,540	508661,710	32,260	3516	6468539,290	508713,630	32,330
3463	6468625,400	508674,190	31,810	3517	6468535,890	508704,950	32,160
3464	6468632,980	508659,340	31,900	3518	6468536,450	508722,650	32,620
3465	6468638,950	508671,970	31,990	3519	6468528,760	508720,770	32,530
3466	6468646,180	508660,260	31,750	3520	6468527,180	508709,630	32,380
3467	6468658,310	508658,930	31,680	3521	6468526,330	508699,950	32,100
3468	6468616,310	508690,330	32,100	3522	6468531,390	508689,900	31,780
3469	6468612,560	508704,670	32,240	3523	6468537,090	508687,280	31,830
3470	6468582,720	508646,870	32,090	3524	6468536,940	508678,880	31,920
3471	6468580,890	508662,000	32,190	3525	6468527,330	508682,250	31,850
3472	6468583,630	508677,180	32,310	3526	6468534,820	508670,500	32,210
3473	6468595,490	508686,170	32,200	3527	6468532,910	508659,030	32,210
3474	6468590,390	508695,680	31,600	3528	6468521,910	508665,730	31,860
3475	6468603,260	508695,620	31,710	3529	6468525,310	508664,700	32,200
3476	6468613,150	508695,200	31,830	3530	6468521,290	508676,940	31,910
3477	6468624,170	508687,940	31,860	3531	6468513,150	508679,070	32,190
3478	6468648,190	508673,720	31,840	3532	6468512,560	508671,040	32,250
3479	6468663,040	508672,550	31,810	3533	6468508,200	508661,680	32,320
3480	6468637,580	508689,250	31,820	3534	6468520,120	508688,230	32,160
3481	6468650,980	508686,650	31,850	3535	6468520,600	508702,320	32,260
3482	6468664,510	508688,610	31,950	3536	6468519,890	508713,480	32,410
3483	6468623,380	508698,960	32,180	3537	6468519,890	508713,480	32,410
3484	6468637,130	508700,550	32,090	3538	6468519,210	508723,630	32,300
3485	6468648,820	508690,430	32,180	3539	6468521,110	508733,600	32,420
3486	6468663,890	508698,440	32,210	3540	6468512,790	508739,390	32,290
3487	6468671,090	508706,390	32,400	3541	6468515,290	508732,820	32,110
3488	6468674,850	508717,150	32,560	3542	6468509,840	508726,460	32,320
3489	6468661,270	508720,700	32,780	3543	6468511,380	508721,070	32,290
3490	6468658,620	508712,780	32,370	3544	6468511,180	508706,620	32,240
3491	6468652,220	508702,850	32,310	3545	6468529,020	508735,750	32,740
3492	6468642,190	508711,980	32,080	3546	6468518,740	508747,080	32,750
3493	6468645,190	508724,900	32,380	3547	6468514,480	508757,970	32,680
3494	6468625,210	508718,350	32,270	3548	6468508,570	508752,820	32,360
3495	6468629,770	508710,270	32,200	3549	6468503,200	508762,490	32,020
3496	6468616,100	508721,760	32,330	3550	6468495,660	508763,110	32,280
3497	6468606,120	508718,740	32,490	3551	6468500,550	508752,370	32,080
3498	6468599,370	508711,240	32,300	3552	6468491,790	508755,030	31,910
3499	6468575,410	508666,950	32,800	3553	6468488,660	508749,550	31,950
3500	6468574,350	508649,960	32,760	3554	6468495,410	508746,400	32,130
3501	6468552,360	508651,960	32,280	3555	6468505,250	508748,820	32,100
3502	6468566,210	508648,650	31,330	3556	6468483,190	508752,680	31,890
3503	6468556,910	508668,700	32,330	3557	6468488,360	508763,450	31,920
3504	6468558,120	508679,950	32,350	3558	6468480,210	508759,270	31,930
3505	6468563,640	508694,840	32,180	3559	6468480,170	508771,520	32,190
3506	6468563,590	508703,530	32,040	3560	6468486,050	508743,440	32,230

3561 6468495,540 508738,580 32,160
 3562 6468503,960 508739,370 32,190
 3563 6468499,810 508729,050 32,080
 3564 6468489,140 508733,290 32,190
 3565 6468479,790 508739,520 32,120
 3566 6468475,470 508755,650 31,860
 3567 6468463,920 508749,870 31,960
 3568 6468464,180 508762,910 31,890
 3569 6468472,210 508763,960 31,930
 3570 6468459,230 508757,090 31,910
 3571 6468468,920 508755,550 31,910
 3572 6468475,420 508749,140 32,250
 3573 6468469,560 508744,750 32,170
 3574 6468451,400 508757,070 31,840
 3575 6468453,970 508748,440 31,850
 3576 6468444,730 508743,990 31,920
 3577 6468444,090 508760,140 31,910
 3578 6468439,030 508730,680 32,230
 3579 6468454,590 508736,380 32,230
 3580 6468467,300 508734,500 32,400
 3581 6468435,100 508717,580 32,580
 3582 6468448,270 508723,620 32,450
 3583 6468462,990 508724,380 32,420
 3584 6468478,000 508729,860 32,290
 3585 6468433,000 508703,220 32,390
 3586 6468450,370 508709,900 32,670
 3587 6468461,710 508711,660 32,760
 3588 6468473,740 508720,010 32,250
 3589 6468486,860 508722,140 32,030
 3590 6468500,890 508721,190 32,200
 3591 6468496,600 508710,880 32,040
 3592 6468484,270 508711,570 32,330
 3593 6468471,940 508711,310 32,770
 3594 6468508,650 508697,480 32,140
 3595 6468505,530 508685,450 32,270
 3596 6468501,600 508677,510 32,410
 3597 6468495,530 508667,280 32,290
 3598 6468484,510 508671,260 32,330
 3599 6468486,710 508683,850 32,220
 3600 6468494,710 508693,340 32,410
 3601 6468492,170 508704,890 32,260
 3602 6468482,350 508701,740 32,360
 3603 6468479,070 508693,310 32,380
 3604 6468474,560 508683,700 32,650
 3605 6468464,800 508675,540 32,700
 3606 6468465,420 508691,930 32,700
 3607 6468472,400 508703,150 32,580
 3608 6468461,150 508705,200 32,680
 3609 6468456,060 508697,180 32,690
 3610 6468453,880 508688,280 32,450
 3611 6468449,190 508678,390 32,710
 3612 6468436,390 508681,850 32,290
 3613 6468428,010 508691,200 32,290
 3614 6468442,690 508693,320 32,080

3615 6468448,280 508769,370 31,880
 3616 6468451,420 508779,830 31,840
 3617 6468464,860 508779,040 31,940
 3618 6468480,080 508780,230 31,850
 3619 6468468,020 508794,190 31,830
 3620 6468457,600 508796,490 31,800
 3621 6468457,180 508810,850 31,860
 3622 6468469,970 508806,850 31,830
 3623 6468479,740 508798,840 31,810
 3624 6468477,160 508791,300 31,820
 3625 6468470,900 508777,140 31,840
 3626 6468457,100 508771,510 31,990
 3627 6468458,280 508788,760 31,920
 3628 6468457,720 508827,300 32,200
 3629 6468466,720 508827,240 32,340
 3630 6468463,620 508838,610 32,120
 3631 6468479,820 508826,280 31,920
 3632 6468492,460 508821,200 32,050
 3633 6468498,380 508825,180 32,200
 3634 6468506,230 508813,840 32,200
 3635 6468514,980 508809,440 32,110
 3636 6468521,380 508815,940 32,140
 3637 6468499,010 508845,020 31,810
 3638 6468478,740 508841,810 31,620
 3639 6468493,110 508835,680 31,980
 3640 6468505,370 508836,810 32,000
 3641 6468515,790 508824,810 31,910
 3642 6468518,380 508848,080 31,970
 3643 6468509,130 508857,910 31,740
 3644 6468464,690 508854,890 31,930
 3645 6468465,420 508872,730 31,700
 3646 6468479,910 508877,820 31,950
 3647 6468481,800 508862,280 31,780
 3648 6468492,650 508855,220 31,730
 3649 6468495,970 508871,560 31,710
 3650 6468514,030 508840,360 31,840
 3651 6468519,050 508863,800 31,770
 3652 6468531,490 508855,790 31,850
 3653 6468527,220 508827,620 32,150
 3654 6468527,990 508844,860 32,040
 3655 6468533,870 508843,010 32,050
 3656 6468536,870 508832,630 32,110
 3657 6468525,400 508798,790 32,180
 3658 6468539,260 508803,200 32,300
 3659 6468530,040 508810,170 32,070
 3660 6468543,230 508817,560 32,120
 3661 6468552,990 508827,240 31,920
 3662 6468544,110 508848,450 31,930
 3663 6468503,180 508805,850 32,740
 3664 6468504,240 508806,610 32,380
 3665 6468508,180 508801,500 32,400
 3666 6468509,360 508802,780 32,030
 3667 6468514,500 508799,890 33,330
 3668 6468514,850 508801,800 32,160

3669	6468519,310	508796,590	33,420	3723	6468600,250	508838,150	31,670
3670	6468520,540	508797,590	32,210	3724	6468600,400	508825,890	31,700
3671	6468522,350	508791,640	33,150	3725	6468596,120	508813,490	31,980
3672	6468522,960	508793,920	32,400	3726	6468583,810	508794,650	31,840
3673	6468529,780	508790,010	33,320	3727	6468590,110	508790,080	31,870
3674	6468532,530	508799,410	32,130	3728	6468597,810	508802,990	31,920
3675	6468530,840	508791,800	32,280	3729	6468605,690	508817,920	31,670
3676	6468536,660	508786,870	32,880	3730	6468600,410	508791,980	31,850
3677	6468536,970	508788,560	32,250	3731	6468610,380	508787,800	32,930
3678	6468543,520	508785,620	32,850	3732	6468611,410	508805,470	31,870
3679	6468544,280	508787,680	32,120	3733	6468612,290	508826,930	31,680
3680	6468547,610	508784,170	32,930	3734	6468622,350	508829,570	31,920
3681	6468549,140	508785,400	32,340	3735	6468614,940	508842,260	31,700
3682	6468556,320	508781,870	32,870	3736	6468614,360	508818,160	30,920
3683	6468557,900	508783,520	32,120	3737	6468615,330	508820,300	31,910
3684	6468569,500	508776,850	32,850	3738	6468614,750	508816,000	31,730
3685	6468570,140	508777,670	32,240	3739	6468611,650	508818,780	31,690
3686	6468575,270	508772,150	32,750	3740	6468632,100	508815,300	30,850
3687	6468582,150	508771,440	32,750	3741	6468633,510	508817,670	32,560
3688	6468582,220	508770,410	32,690	3742	6468633,600	508812,910	31,480
3689	6468582,910	508768,710	32,270	3743	6468646,470	508812,640	30,760
3690	6468584,660	508771,500	32,240	3744	6468647,640	508814,900	32,470
3691	6468584,660	508770,050	32,050	3745	6468646,040	508810,590	31,420
3692	6468577,710	508738,760	33,380	3746	6468658,470	508810,350	30,770
3693	6468577,430	508740,900	33,470	3747	6468659,140	508807,710	31,820
3694	6468573,330	508737,080	33,290	3748	6468659,110	508812,530	32,500
3695	6468568,760	508737,410	33,350	3749	6468675,860	508806,800	30,670
3696	6468560,660	508739,040	32,530	3750	6468676,810	508804,350	31,550
3697	6468562,240	508740,250	33,420	3751	6468676,950	508809,320	32,180
3698	6468572,120	508741,040	33,420	3752	6468687,470	508804,670	30,650
3699	6468577,180	508756,110	32,250	3753	6468686,070	508802,870	31,590
3700	6468577,240	508754,570	33,310	3754	6468688,550	508807,360	32,270
3701	6468569,940	508757,490	33,280	3755	6468697,770	508803,080	30,780
3702	6468573,720	508756,410	33,360	3756	6468697,040	508800,680	31,710
3703	6468563,660	508759,500	33,160	3757	6468698,080	508805,830	32,420
3704	6468560,410	508760,730	33,280	3758	6468713,510	508799,910	30,720
3705	6468559,660	508763,140	32,350	3759	6468714,280	508797,060	31,780
3706	6468554,200	508762,510	32,390	3760	6468714,530	508802,330	32,350
3707	6468554,010	508761,480	32,830	3761	6468730,190	508796,690	30,680
3708	6468547,160	508760,460	33,190	3762	6468731,020	508794,600	31,180
3709	6468548,910	508763,310	33,170	3763	6468732,150	508798,550	31,960
3710	6468550,500	508807,010	31,930	3764	6468745,800	508793,570	30,540
3711	6468557,200	508794,010	32,120	3765	6468745,630	508790,890	31,550
3712	6468557,720	508817,840	31,820	3766	6468747,380	508796,390	32,200
3713	6468562,590	508810,990	32,080	3767	6468759,470	508791,040	30,500
3714	6468558,160	508843,500	31,980	3768	6468758,740	508788,370	31,590
3715	6468567,510	508852,700	31,690	3769	6468760,920	508793,390	31,820
3716	6468570,110	508838,140	31,910	3770	6468776,180	508787,770	30,350
3717	6468567,450	508827,260	31,740	3771	6468775,250	508784,760	31,630
3718	6468569,730	508793,190	32,170	3772	6468776,860	508790,930	32,070
3719	6468580,150	508812,120	31,950	3773	6468788,770	508785,570	30,320
3720	6468582,630	508825,110	31,690	3774	6468788,840	508782,840	31,480
3721	6468580,650	508848,120	31,550	3775	6468790,420	508787,460	31,750
3722	6468587,590	508842,640	31,570	3776	6468803,250	508782,590	30,310

3777 6468804,040 508784,870 31,730
 3778 6468801,260 508779,990 31,630
 3779 6468819,030 508779,790 30,290
 3780 6468820,130 508777,100 31,170
 3781 6468820,240 508782,360 31,640
 3782 6468834,630 508774,870 30,770
 3783 6468835,440 508779,260 31,440
 3784 6468848,810 508773,450 30,120
 3785 6468836,220 508776,330 30,240
 3786 6468847,420 508771,550 31,310
 3787 6468848,790 508775,670 31,350
 3788 6468859,590 508771,650 30,070
 3789 6468858,530 508769,480 31,250
 3790 6468860,300 508773,610 31,340
 3791 6468871,540 508769,280 30,040
 3792 6468870,620 508767,340 31,190
 3793 6468871,980 508771,690 31,450
 3794 6468883,730 508766,710 29,980
 3795 6468884,420 508764,680 31,360
 3796 6468885,340 508769,230 31,400
 3797 6468899,720 508764,010 29,900
 3798 6468901,680 508761,640 30,950
 3799 6468901,180 508766,000 31,240
 3800 6468915,180 508760,730 29,810
 3801 6468914,690 508758,780 31,040
 3802 6468916,400 508763,250 30,990
 3803 6468624,400 508792,390 31,910
 3804 6468636,450 508784,100 33,070
 3805 6468632,600 508805,030 31,820
 3806 6468644,890 508799,950 31,940
 3807 6468634,880 508823,000 32,190
 3808 6468635,720 508838,190 31,940
 3809 6468652,950 508827,700 31,910
 3810 6468654,810 508799,890 31,910
 3811 6468656,210 508788,000 31,930
 3812 6468648,360 508783,010 31,820
 3813 6468664,810 508789,680 31,870
 3814 6468664,500 508821,680 31,690
 3815 6468684,970 508822,160 31,660
 3816 6468677,060 508797,990 31,540
 3817 6468682,020 508783,820 31,930
 3818 6468673,420 508788,140 31,820
 3819 6468691,310 508792,540 31,960
 3820 6468701,210 508783,890 32,160
 3821 6468689,890 508782,340 32,200
 3822 6468708,240 508779,010 31,960
 3823 6468718,990 508771,550 32,220
 3824 6468719,510 508783,300 31,920
 3825 6468730,070 508781,390 31,930
 3826 6468736,840 508762,650 32,240
 3827 6468729,010 508767,840 32,030
 3828 6468753,500 508760,010 32,150
 3829 6468739,760 508779,320 32,070
 3830 6468750,460 508777,510 32,060

3831 6468763,060 508766,940 31,780
 3832 6468758,230 508780,400 31,770
 3833 6468775,020 508769,840 31,830
 3834 6468768,020 508755,010 31,760
 3835 6468784,120 508774,880 31,670
 3836 6468790,070 508749,950 31,760
 3837 6468785,560 508766,580 31,460
 3838 6468803,550 508771,090 31,400
 3839 6468801,010 508753,650 31,650
 3840 6468813,380 508768,040 31,360
 3841 6468818,690 508750,110 31,500
 3842 6468823,710 508773,570 31,540
 3843 6468829,800 508762,030 31,530
 3844 6468834,090 508755,260 31,370
 3845 6468852,590 508766,200 31,180
 3846 6468849,660 508745,870 31,650
 3847 6468856,070 508752,460 31,590
 3848 6468872,640 508741,130 31,720
 3849 6468875,900 508760,450 31,210
 3850 6468885,170 508733,690 31,570
 3851 6468881,730 508749,850 31,380
 3852 6468896,820 508723,000 31,320
 3853 6468896,700 508743,760 31,230
 3854 6468898,290 508758,980 31,190
 3855 6468911,840 508750,950 31,180
 3856 6468915,080 508733,290 31,220
 3857 6468909,820 508716,730 31,210
 3858 6468927,780 508742,990 31,170
 3859 6468922,930 508722,400 31,310
 3860 6468917,210 508703,330 31,360
 3861 6468937,380 508729,640 31,050
 3862 6468930,700 508713,420 31,420
 3863 6468927,050 508700,070 31,360
 3864 6468922,370 508686,250 31,530
 3865 6468864,930 508731,010 31,740
 3866 6468877,560 508723,570 31,710
 3867 6468914,610 508716,520 31,130
 3868 6468918,860 508722,650 30,940
 3869 6468931,120 508734,060 30,960
 3870 6468947,650 508722,310 31,240
 3871 6468940,750 508709,790 31,080
 3872 6468935,840 508698,540 31,460
 3873 6468935,410 508684,540 31,810
 3874 6468923,060 508677,410 31,670
 3875 6468930,070 508670,440 31,970
 3876 6468947,250 508681,020 31,600
 3877 6468952,590 508695,270 31,410
 3878 6468954,780 508709,380 31,060
 3879 6468931,410 508662,780 32,280
 3880 6468941,330 508672,670 32,100
 3881 6468934,700 508654,900 32,140
 3882 6468942,820 508664,720 32,150
 3883 6468951,890 508675,560 31,460
 3884 6468960,070 508685,030 31,720

3885	6468965,050	508705,410	31,210	3939	6469020,400	508569,270	31,770
3886	6468970,680	508700,580	31,480	3940	6469005,740	508576,200	31,850
3887	6468962,060	508695,790	31,480	3941	6468995,790	508583,310	31,650
3888	6469076,240	508595,390	30,910	3942	6468986,440	508596,940	31,590
3889	6469065,830	508609,770	30,860	3943	6468973,730	508610,500	31,700
3890	6469072,930	508577,560	31,180	3944	6468964,400	508623,400	31,790
3891	6469064,960	508587,470	31,100	3945	6468959,200	508642,830	31,880
3892	6469058,180	508599,030	31,120	3946	6468965,650	508655,230	32,070
3893	6469053,030	508613,970	31,150	3947	6468971,220	508665,940	32,140
3894	6469045,040	508626,850	31,100	3948	6468980,270	508670,970	32,150
3895	6469031,250	508637,420	31,370	3949	6468975,700	508662,880	32,170
3896	6469029,920	508624,340	31,190	3950	6468985,210	508670,580	32,070
3897	6469036,440	508616,250	31,180	3951	6468988,950	508681,440	31,790
3898	6469043,250	508607,270	31,070	3952	6468996,500	508669,330	32,270
3899	6469046,010	508595,220	31,220	3953	6469006,550	508663,150	32,400
3900	6469051,160	508587,940	31,040	3954	6468991,520	508664,250	32,260
3901	6469062,980	508579,110	31,360	3955	6468954,290	508663,900	32,140
3902	6469057,900	508565,620	31,640	3956	6468959,840	508672,470	31,730
3903	6469069,550	508560,260	31,320	3957	6468971,060	508683,020	31,820
3904	6469067,240	508548,540	31,310	3958	6468974,380	508693,890	31,390
3905	6469044,480	508581,550	31,300	3959	6468948,340	508654,120	32,160
3906	6469055,900	508556,240	31,570	3960	6468904,650	508735,140	31,160
3907	6469046,750	508568,220	31,660	3961	6469052,830	508531,990	31,390
3908	6469028,410	508587,100	31,270	3962	6469061,170	508521,570	31,460
3909	6469031,370	508602,070	31,100	3963	6469062,210	508514,410	31,360
3910	6469020,860	508613,800	31,340	3964	6469056,140	508515,900	32,200
3911	6469016,430	508629,630	31,320	3965	6469055,980	508518,880	31,320
3912	6469017,260	508598,400	31,160	3966	6469052,300	508522,720	31,400
3913	6469008,550	508613,160	31,330	3967	6469047,290	508527,410	31,420
3914	6469003,260	508631,790	31,450	3968	6469042,840	508530,250	32,660
3915	6469017,240	508649,360	31,540	3969	6469038,280	508532,850	31,710
3916	6469001,000	508645,300	31,690	3970	6469037,460	508529,750	31,600
3917	6468988,820	508636,360	31,550	3971	6469034,510	508528,050	32,500
3918	6468992,770	508624,940	31,570	3972	6469032,810	508533,310	32,180
3919	6468986,500	508612,590	31,700	3973	6469034,050	508536,560	31,660
3920	6468996,630	508610,690	31,350	3974	6469028,580	508538,840	32,220
3921	6468992,340	508653,160	31,650	3975	6469029,230	508541,510	31,650
3922	6468978,130	508651,160	31,890	3976	6469023,960	508541,970	32,550
3923	6468976,010	508639,450	31,750	3977	6469025,000	508544,120	31,640
3924	6468976,070	508624,420	31,590	3978	6469020,830	508546,790	32,910
3925	6468994,140	508601,780	31,750	3979	6469020,770	508549,130	31,700
3926	6469004,880	508604,960	31,270	3980	6469016,020	508551,080	31,570
3927	6469002,150	508594,000	31,780	3981	6469024,770	508558,850	31,650
3928	6469010,280	508590,000	31,610	3982	6469008,790	508551,350	33,070
3929	6469013,670	508579,060	31,720	3983	6469009,350	508553,390	31,930
3930	6469029,390	508576,820	31,550	3984	6469003,020	508555,050	32,010
3931	6469033,730	508565,250	31,640	3985	6468983,280	508568,160	33,400
3932	6469044,770	508556,500	31,660	3986	6468985,520	508568,440	32,270
3933	6469050,180	508548,330	31,480	3987	6468981,850	508573,980	33,260
3934	6469057,410	508542,920	31,360	3988	6468984,040	508574,130	33,410
3935	6469067,630	508540,030	31,390	3989	6468986,220	508573,740	32,120
3936	6469062,490	508532,210	31,340	3990	6468981,170	508579,200	33,360
3937	6469046,070	508538,870	31,570	3991	6468979,150	508582,430	32,190
3938	6469035,100	508547,620	31,700	3992	6468977,580	508580,510	32,280

3993 6468992,690 508572,180 31,670
 3994 6468984,880 508588,920 31,900
 3995 6468960,420 508611,380 31,900
 3996 6468970,490 508596,700 32,210
 3997 6468967,950 508602,220 31,910
 3998 6468964,040 508607,970 31,860
 3999 6468969,220 508595,870 32,910
 4000 6468966,100 508601,610 33,330
 4001 6468963,080 508606,570 33,350
 4002 6468958,200 508600,780 33,240
 4003 6468960,450 508604,330 33,310
 4004 6468963,300 508600,170 33,430
 4005 6468979,040 508603,870 31,790
 4006 6468963,810 508636,180 31,850
 4007 6468956,390 508627,670 32,320
 4008 6468950,460 508635,100 32,050
 4009 6468945,530 508644,850 32,150
 4010 6468938,210 508646,940 32,380
 4011 6468898,180 508708,380 31,410
 4012 6468897,150 508706,320 32,630
 4013 6468886,720 508712,360 32,700
 4014 6468887,960 508715,860 31,510
 4015 6468875,540 508719,930 32,460
 4016 6468864,420 508727,340 32,250
 4017 6468857,970 508730,250 32,330
 4018 6468857,470 508734,300 31,490
 4019 6468846,920 508734,800 32,750
 4020 6468847,460 508737,950 31,420
 4021 6468838,560 508737,280 32,610
 4022 6468840,360 508739,920 31,590
 4023 6468829,540 508739,090 31,590
 4024 6468824,810 508736,840 31,710
 4025 6468826,530 508742,500 31,590
 4026 6468823,850 508741,360 31,740
 4027 6468864,660 508748,720 31,700
 4028 6468842,110 508760,400 31,500
 4029 6468808,620 508747,920 31,820
 4030 6468779,250 508757,990 31,660
 4031 6468793,940 508771,520 31,440
 4032 6468743,830 508758,560 32,030
 4033 6468730,070 508781,390 31,930
 4034 6468706,010 508815,910 31,540
 4035 6468731,720 508810,740 31,750
 4036 6468762,230 508801,300 31,830
 4037 6468786,350 508799,600 31,580
 4038 6468807,720 508793,720 31,370
 4039 6469192,540 508416,490 31,000
 4040 6469182,640 508427,300 31,300
 4041 6469154,580 508445,310 32,240
 4042 6469149,230 508447,010 32,540
 4043 6469143,380 508448,560 32,470
 4044 6469136,920 508451,620 32,530
 4045 6469130,640 508454,700 32,670
 4046 6469124,080 508457,280 32,650

4047 6469119,060 508460,150 32,320
 4048 6469112,690 508463,750 32,330
 4049 6469107,730 508467,110 32,290
 4050 6469103,790 508469,200 32,280
 4051 6469104,370 508471,340 31,280
 4052 6469109,330 508468,860 31,310
 4053 6469113,930 508466,050 31,350
 4054 6469119,610 508462,540 31,300
 4055 6469125,210 508459,330 31,130
 4056 6469130,990 508456,980 31,030
 4057 6469138,970 508452,710 30,900
 4058 6469145,060 508450,650 30,920
 4059 6469155,940 508448,190 30,900
 4060 6469150,900 508449,530 30,980
 4061 6469169,780 508443,740 30,840
 4062 6469191,030 508441,270 31,230
 4063 6469140,890 508465,660 30,980
 4064 6469150,190 508469,770 30,740
 4065 6469162,670 508465,490 30,800
 4066 6469117,570 508483,080 30,900
 4067 6469151,600 508485,050 30,820
 4068 6469189,430 508430,130 30,940
 4069 6469211,110 508403,370 31,050
 4070 6469222,110 508442,610 31,220
 4071 6469256,370 508381,080 32,220
 4072 6469214,950 508387,390 31,450
 4073 6469244,090 508369,620 32,000
 4074 6469226,890 508407,650 31,080
 4075 6469129,060 508280,790 31,440
 4076 6469138,150 508340,010 31,720
 4077 6469162,965 508415,521 31,237
 4078 6469164,982 508419,002 31,279
 4079 6469166,855 508422,506 31,262
 4080 6469168,842 508426,058 31,215
 4081 6469170,656 508428,819 31,214
 4082 6469179,154 508422,263 31,285
 4083 6469177,167 508420,606 31,326
 4084 6469174,823 508418,794 31,365
 4085 6469172,487 508416,467 31,239
 4086 6469170,505 508414,519 31,283
 4087 6469178,132 508409,151 31,322
 4088 6469180,529 508410,034 31,328
 4089 6469183,174 508412,068 31,251
 4090 6469184,614 508413,197 31,265
 4091 6469188,602 508408,144 31,323
 4092 6469186,570 508405,897 31,353
 4093 6469183,587 508404,226 31,338
 4094 6469181,672 508402,555 31,410
 4095 6469185,652 508396,411 31,366
 4096 6469188,456 508397,439 31,381
 4097 6469191,561 508399,638 31,375
 4098 6469193,986 508401,610 31,398
 4099 6469197,965 508396,055 31,399
 4100 6469195,710 508393,732 31,501

4101	6469193,135	508391,525	31,449
4102	6469190,769	508388,976	31,490
4103	6469196,762	508384,397	31,547
4104	6469198,890	508385,566	31,450
4105	6469197,720	508376,987	31,582
4106	6469200,190	508377,615	31,594
4107	6469203,755	508380,277	31,434
4108	6469206,388	508382,606	31,491
4109	6469202,818	508388,384	31,371
4110	6469209,138	508381,449	31,471
4111	6469207,407	508378,665	31,521
4112	6469205,797	508376,565	31,687
4113	6469203,795	508375,837	31,714
4114	6469201,573	508375,393	31,638
4115	6469197,368	508372,431	31,656
4116	6469195,318	508370,169	31,625
4117	6469193,263	508372,629	31,584
4118	6469195,760	508375,462	31,621
4119	6469191,003	508374,508	31,547
4120	6469188,035	508376,497	31,594
4121	6469188,552	508378,248	31,480
4122	6469186,018	508381,921	31,332
4123	6469187,561	508385,702	31,269
4124	6469184,848	508386,017	31,329
4125	6469182,332	508388,556	31,310
4126	6469181,056	508392,946	31,350
4127	6469178,020	508396,630	31,283
4128	6469175,692	508400,336	31,229
4129	6469172,960	508404,111	31,204
4130	6469169,531	508408,488	31,159
4131	6469160,871	508406,605	31,268
4132	6469163,220	508402,754	31,179
4133	6469166,727	508398,028	31,167
4134	6469170,427	508392,791	31,210
4135	6469173,948	508387,569	31,290
4136	6469179,062	508381,336	31,447
4137	6469183,161	508376,435	31,476
4138	6469187,909	508371,081	31,567
4139	6469192,345	508365,780	31,824
4140	6469187,399	508361,850	31,829
4141	6469184,856	508363,932	31,692
4142	6469181,656	508366,650	31,602
4143	6469178,721	508371,901	31,501
4144	6469175,498	508375,537	31,437
4145	6469171,158	508381,202	31,309
4146	6469167,111	508385,931	31,276
4147	6469162,260	508392,106	31,106
4148	6469156,987	508396,994	31,162
4149	6469153,255	508400,677	31,134